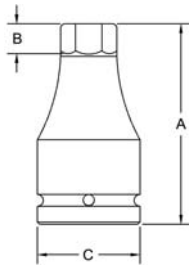


1" Square Drive Impact Hex Drivers

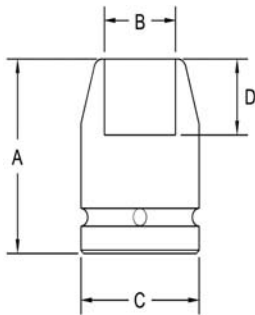


Part # Hex	Hex Size	Overall Length (A)	Depth Nose (B)	Diameter Drive End (C)
0330	5/8	3.94	.79	2.13
0331	3/4	3.94	.79	2.13
0332	13/16	3.94	.79	2.13
0333	7/8	3.94	.79	2.13
0334	1	3.94	.79	2.13
0334	1 1/16	3.94	.79	2.13
0335	1 1/8	3.94	.79	2.13
0336	1 3/16	3.94	.79	2.13
0337	1 1/4	3.94	.79	2.13
0338	1 5/16	3.94	.79	2.13
0339	1 3/8	3.94	.79	2.13
0340	1 1/2	3.94	.79	2.13
0341	1 5/8	3.94	.79	2.13
0342	1 3/4	3.94	.798	2.13

Sockets can be configured with the following options:
FM = Fixed Magnet SD = Side Magnet TM = Tubular Magnet
SM = Spring Magnet FL = Fast Lead
Fixed and rotating UHMW plastic sleeves can be special ordered

1" Square Drive Sockets

6 Point and Double Hex, Standard Length

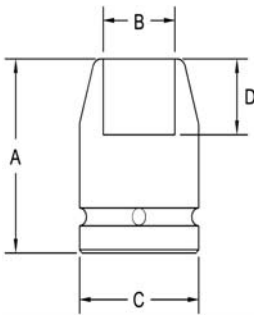


Part # 6 Point	Part # Double Hex	Hex Opening	Overall Length (A)	Diameter Nose (B)	Diameter Drive End (C)	Opening Depth (D)
6000	6000-D	3/4	2.12	1.31	2.00	.812
6001	6001-D	13/16	2.12	1.37	2.00	.812
6002	6002-D	7/8	2.12	1.50	2.00	.812
6003	6003-D	15/16	2.12	1.50	2.00	.812
6004	6004-D	1	2.12	1.62	2.00	.812
6005	6005-D	1 1/16	2.12	1.68	2.00	.812
6006	6006-D	1 1/8	2.12	1.75	2.00	.812
6007	6007-D	1 3/16	2.12	2.12	2.00	.812
6008	6008-D	1 1/4	2.12	2.12	2.12	.812
6009	6009-D	1 5/16	2.12	2.12	2.12	.812
6010	6010-D	1 3/8	2.12	2.12	2.12	.812
6011	6011-D	1 7/16	2.25	2.25	2.12	.937
6012	6012-D	1 1/2	2.25	2.25	2.12	.937
6013	6013-D	1 9/16	2.25	2.37	2.12	.937
6014	6014-D	1 5/8	2.37	2.50	2.12	.937
6015	6015-D	1 11/16	2.37	2.50	2.12	.937
6016	6016-D	1 3/4	2.37	2.62	2.62	1.06
6017	6017-D	1 13/16	2.50	2.75	2.62	1.06
6018	6018-D	1 7/8	2.50	2.75	2.62	1.06
6019	6019-D	1 15/16	2.50	2.87	2.62	1.06
6020	6020-D	2	2.62	3.00	2.62	1.18
6021	6021-D	2 1/16	2.62	3.00	2.62	1.18
6022	6022-D	2 1/8	2.62	3.12	2.62	1.18
6023	6023-D	2 3/16	2.75	3.25	3.25	1.31
6024	6024-D	2 1/4	2.75	3.25	3.25	1.31
6025	6025-D	2 5/16	2.75	3.37	3.25	1.37
6026	6026-D	2 3/8	2.87	3.50	3.25	1.37
6027	6027-D	2 7/16	2.87	3.50	3.25	1.37
6028	6028-D	2 1/2	2.87	3.75	3.25	1.37
6029	6029-D	2 9/16	3.00	3.75	3.25	1.50
6030	6030-D	2 5/8	3.00	3.75	3.25	1.50
6031	6031-D	2 11/16	3.00	4.00	3.25	1.50
6032	6032-D	2 3/4	3.12	4.00	3.25	1.62
6033	6033-D	2 13/16	3.12	4.00	3.25	1.62

Sockets can be configured with the following options:
FM = Fixed Magnet SD = Side Magnet TM = Tubular Magnet
SM = Spring Magnet FL = Fast Lead
Fixed and rotating UHMW plastic sleeves can be special ordered

1" Square Drive Sockets

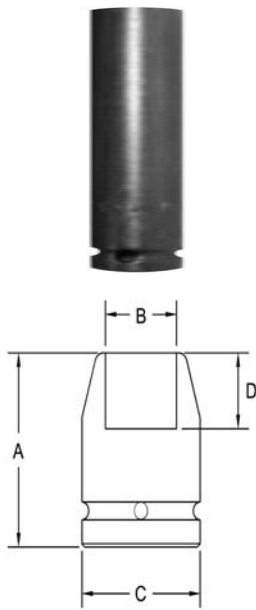
6 point and Double Hex, Thin Wall Standard Length



Part # 6 Point	Part # Double Hex	Hex Opening	Overall Length (A)	Diameter Nose (B)	Diameter Drive End (C)	Opening Depth (D)
6060	6060-D	15/16	2.12	1.43	1.87	.812
6061	6061-D	1	2.12	1.50	1.87	.812
6062	6062-D	1 1/16	2.12	1.56	1.87	.812
6063	6063-D	1 1/8	2.12	1.62	1.87	.812
6064	6064-D	1 3/16	2.12	1.75	2.00	.812
6065	6065-D	1 1/4	2.12	1.81	2.00	.812
6066	6066-D	1 5/16	2.12	1.87	2.00	.812
6067	6067-D	1 3/8	2.12	1.93	2.00	.812
6068	6068-D	1 7/16	2.25	2.00	2.00	.937
6069	6069-D	1 1/2	2.25	2.12	2.12	.937
6070	6070-D	1 5/8	2.37	2.31	2.12	.937
6071	6071-D	1 11/16	2.37	2.37	2.12	.937
6072	6072-D	1 3/4	2.37	2.43	2.12	1.06
6073	6073-D	1 13/16	2.50	2.56	2.12	1.06
6074	6074-D	1 7/8	2.50	2.62	2.62	1.06
6075	6075-D	2	2.62	2.75	2.62	1.18
6076	6076-D	2 1/8	2.62	2.93	2.62	1.18
6077	6077-D	2 1/4	2.75	3.12	2.62	1.31
6078	6078-D	2 1/2	2.50	3.37	3.25	1.43

Sockets can be configured with the following options:
FM = Fixed Magnet SD = Side Magnet TM = Tubular Magnet
SM = Spring Magnet FL = Fast Lead
Fixed and rotating UHMW plastic sleeves can be special ordered

1" Square Drive Sockets 6 Point and Double Hex Long Length

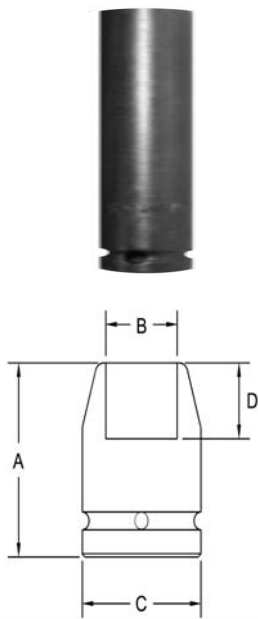


Part # 6 Point	Part # Double Hex	Hex Opening	Overall Length (A)	Diameter Nose (B)	Diameter Drive End (C)	Opening Depth (D)
6100	6100-D	13/16	3	1.37	2.12	.531
6101	6101-D	7/8	3	1.43	2.12	.562
6102	6102-D	15/16	3	1.50	2.12	.625
6103	6103-D	1	3	1.62	2.12	.625
6104	6104-D	1 1/8	3	1.75	2.12	.750
6105	6105-D	1 1/4	3	2.12	2.12	.812
6106	6106-D	1 5/16	3	2.12	2.12	.812
6107	6107-D	1 3/8	3	2.12	2.12	.812
6108	6108-D	1 7/16	3	2.25	2.12	.937
6109	6109-D	1 1/2	3.25	2.25	2.12	.937

Sockets can be configured with the following options:
FM = Fixed Magnet SD = Side Magnet TM = Tubular Magnet
SM = Spring Magnet FL = Fast Lead
Fixed and rotating UHMW plastic sleeves can be special ordered

1" Square Drive Sockets

6 Point and Double Hex, Extra Long Length



Part # 6 Point	Part # Double Hex	Hex Opening	Overall Length (A)	Diameter Nose (B)	Diameter Drive End (C)	Opening Depth (D)
6140	6140-D	3/4	4.25	1.25	2.12	.468
6141	6141-D	13/16	4.25	1.37	2.12	.531
6142	6142-D	7/8	4.25	1.43	2.12	.562
6143	6143-D	15/16	4.25	1.50	2.12	.625
6144	6144-D	1	4.25	1.56	2.12	.625
6145	6145-D	1 1/16	4.25	1.62	2.12	.687
6146	6146-D	1 1/8	4.25	1.75	2.12	.750
6147	6147-D	1 3/16	4.25	1.87	2.12	.750
6148	6148-D	1 1/4	4.25	2.12	2.12	.812
6149	6149-D	1 5/16	4.25	2.12	2.12	.812
6150	6150-	1 3/8	4.25	2.12	2.12	.812
6151	6151-D	1 7/16	4.25	2.25	2.12	.937
6152	6152-D	1 1/2	4.25	2.25	2.12	1.00
6153	6153-D	1 9/16	4.25	2.37	2.12	1.00
6154	6154-D	1 5/8	4.25	2.50	2.12	1.12
6155	6155-D	1 11/16	4.25	2.50	2.12	1.12
6156	6156-D	1 3/4	4.25	2.62	2.62	1.12
6157	6157-D	1 13/16	4.25	2.75	2.62	1.25
6158	6158-D	1 7/8	4.25	2.75	2.62	1.25
6159	6159-D	1 15/16	4.25	2.87	2.62	1.25
6160	6160-D	2	4.37	2.87	2.62	1.37
6161	6161-D	2 1/16	4.37	3.00	2.62	1.37
6162	6162-D	2 1/8	4.50	3.12	2.62	1.37
6163	6163-D	2 3/16	4.50	3.12	2.62	1.50
6164	6164-D	2 1/4	4.50	3.25	3.25	1.50
6165	6165-D	2 5/16	4.50	3.37	3.25	1.50
6166	6166-D	2 3/8	4.50	3.50	3.25	1.62
6167	6167-D	2 7/16	4.50	3.50	3.25	1.62
6168	6168-D	2 1/2	4.50	3.50	3.25	1.62
6169	6169-D	2 9/16	4.50	3.75	3.25	1.75
6170	6170-D	2 5/8	4.50	3.75	3.25	1.75
6171	6171-D	2 11/16	4.50	4.00	3.25	1.75
6172	6172-D	2 3/4	4.62	4.00	3.25	1.87
6173	6173-D	2 13/16	4.62	4.00	3.25	1.87

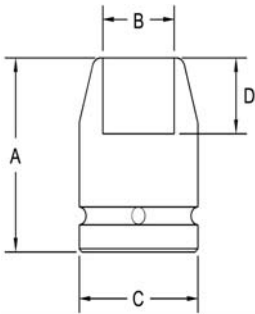
Sockets can be configured with the following options:

FM = Fixed Magnet SD = Side Magnet TM = Tubular Magnet
SM = Spring Magnet FL = Fast Lead

Fixed and rotating UHMW plastic sleeves can be special ordered

1" Square Drive Sockets

6 Point and Double Hex, Thin Wall, Extra Long Length



Part # 6 Point	Part # Double Hex	Hex Opening	Overall Length (A)	Diameter Nose (B)	Diameter Drive End (C)	Opening Depth (D)
6200	6200-D	7/8	4.25	1.43	2.12	.562
6201	6201-D	15/16	4.25	1.50	2.12	.625
6202	6202-D	1 1/16	4.25	1.56	2.12	.750
6203	6203-D	1 1/8	4.25	1.62	2.12	.750
6204	6204-D	1 1/4	4.25	1.81	2.12	.812
6205	6205-D	1 5/16	4.25	1.87	2.12	.812
6206	6206-D	1 1/2	4.25	2.12	2.12	1.00

Sockets can be configured with the following options:

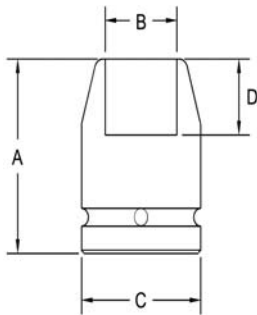
FM = Fixed Magnet SD = Side Magnet TM = Tubular Magnet

SM = Spring Magnet FL = Fast Lead

Fixed and rotating UHMW plastic sleeves can be special ordered

1" Square Drive Sockets

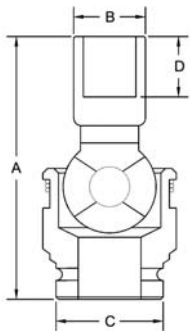
Single Square and Double Square, Standard Length



Part # Square	Part # Double Sq	Square Opening	Overall Length (A)	Diameter Nose (B)	Diameter Drive End (C)	Opening Depth (D)
6230	6230-D	5/8	2.12	1.37	2.00	.812
6231	6231-D	11/16	2.12	1.50	2.00	.812
6232	6232-D	3/4	2.12	1.62	2.00	.812
6233	6233-D	13/16	2.12	1.75	2.00	.812
6234	6234-D	7/8	2.12	2.00	2.00	.812
6235	6235-D	15/16	2.12	2.12	2.12	.812
6236	6236-D	1	2.12	2.12	2.12	.812
6237	6237-D	1 1/16	2.12	2.12	2.12	.812
6238	6238-D	1 1/8	2.25	2.25	2.12	.937
6239	6239-D	1 3/16	2.25	2.25	2.12	.937
6240	6240-D	1 1/4	2.25	2.37	2.12	.937
6241	6241-D	1 5/16	2.25	2.50	2.12	.937
6242	6242-D	1 3/8	2.31	2.62	2.62	1.00
6243	6243-D	1 7/16	2.31	2.62	2.62	1.00
6244	6244-D	1 1/2	2.37	2.75	2.62	1.06
6245	6245-D	1 9/16	2.37	2.75	2.62	1.06
6246	6246-D	1 5/8	2.50	2.87	2.62	1.06
6247	6247-D	1 11/16	2.50	3.25	3.25	1.12
6248	6248-D	1 3/4	2.50	3.50	3.25	1.12
6249	6249-D	1 13/16	2.62	3.50	3.25	1.25
6250	6250-D	1 7/8	2.62	3.50	3.25	1.25
6251	6251-D	1 15/16	2.62	3.75	3.25	1.25
6252	6252-D	2	2.75	3.75	3.25	1.31

Sockets can be configured with the following options:
FM = Fixed Magnet SD = Side Magnet TM = Tubular Magnet
SM = Spring Magnet FL = Fast Lead
Fixed and rotating UHMW plastic sleeves can be special ordered

1" Square Drive Universal Socket 6 Point



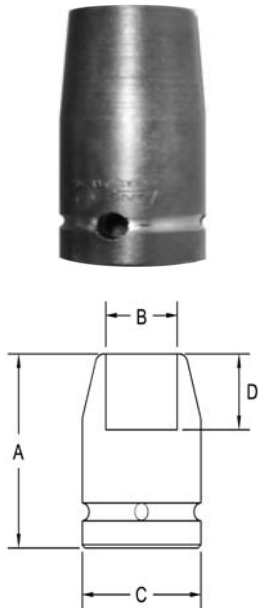
Part # 6 Point	Hex Opening	Overall Length (A)	Diameter Nose (B)	Diameter Drive End (C)	Opening Depth (D)
UA6430	7/8	5.20	1.54	2.28	.79
UA6431	15/16	5.20	1.57	2.28	.79
UA6432	1	5.20	1.65	2.28	.79
UA6433	1 1/16	5.20	1.73	2.28	.79
UA6434	1 1/8	5.20	1.81	2.28	.79
UA6435	1 3/16	5.20	1.97	2.28	.79
UA6436	1 1/4	5.20	2.05	2.28	.79
UA6437	1 5/16	5.20	2.17	2.28	.83
UA6438	1 3/8	5.20	2.17	2.28	.91
UA6439	1 7/16	5.20	2.20	2.28	.91
UA6440	1 1/2	5.39	2.32	2.28	.94
UA6441`	1 9/16	5.39	2.44	2.28	.94
UA6442	1 5/8	5.39	2.48	2.28	1.02
UA6443	1 11/16	5.39	2.60	2.28	1.02
UA6444	1 3/4	5.59	2.68	2.28	1.18
UA6445	1 13/16	5.59	2.72	2.28	1.18
UA6446	1 7/8	5.59	2.87	2.28	1.18
UA6447	1 15/16	5.59	2.91	2.28	1.22
UA6448	2	5.59	2.99	2.28	1.22

Sockets can be configured with the following options:

FM = Fixed Magnet

1" Square Drive Sockets METRIC

6 Point and Double Hex Standard Length



Part # 6 Point	Part # Double Hex	Hex Opening	Overall Length (A)	Diameter Nose (B)	Diameter Drive End (C)	Opening Depth (D)
6280	6280-D	21	54	34.9	50.8	13.5
6281	6281-D	22	54	38.1	50.8	14.2
6282	6282-D	23	54	38.1	50.8	20.6
6283	6283-D	24	54	38.1	50.8	20.6
6284	6284-D	25	54	41.3	50.8	20.6
6285	6285-D	26	54	41.3	50.8	20.6
6286	6286-D	27	54	42.9	50.8	20.6
6287	6287-D	28	54	44.4	50.8	20.6
6288	6288-D	29	54	47.6	50.8	20.6
6289	6289-D	30	54	50.8	50.8	20.6
6290	6290-D	30	54	44.4	54.0	20.6
6291	6291-D	32	54	54.0	54.0	20.6
6292	6292-D	33	54	54.0	54.0	20.6
6293	6293-D	34	54	54.0	54.0	20.6
6294	6294-D	35	54	54.0	54.0	20.6
6295	6295-D	36	57	57.1	54.0	23.9
6296	6296-D	37	57	57.1	54.0	23.9
6297	6297-D	38	57	57.1	54.0	23.9
6298	6298-D	41	60	63.5	54.0	23.9
6299	6299-D	42	60	63.5	54.0	23.9
6300	6300-D	46	64	69.8	66.7	26.9
6301	6301-D	47	64	69.8	66.7	26.9
6302	6302-D	48	64	69.8	66.7	26.9
6303	6303-D	50	66	76.2	66.7	30.2

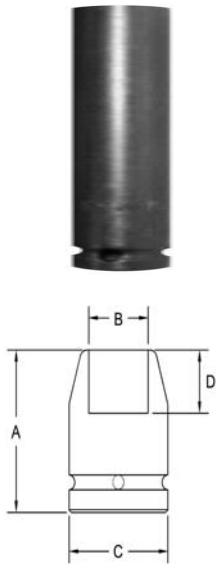
Sockets can be configured with the following options:

FM = Fixed Magnet SD = Side Magnet TM = Tubular Magnet

SM = Spring Magnet FL = Fast Lead

Fixed and rotating UHMW plastic sleeves can be special ordered

1" Square Drive Sockets METRIC 6 Point and Double Hex Long Length



Part # 6 Point	Part # Double Hex	Hex Opening	Overall Length (A)	Diameter Nose (B)	Diameter Drive End (C)	Opening Depth (D)
6325	6325-D	21	108	34.9	54.0	13.5
6326	6326-D	23	108	36.5	54.0	15.9
6327	6327-D	24	108	38.1	54.0	15.9
6328	6328-D	27	108	41.3	54.0	17.5
6329	6329-D	28	108	44.4	54.0	19.1
6330	6330-D	29	108	47.6	54.0	19.1
6331	6331-D	32	108	54.0	54.0	20.6
6332	6332-D	33	108	54.0	54.0	20.6
6333	6333-D	35	108	54.0	54.0	20.6
6334	6334-D	36	108	54.0	54.0	23.8
6335	6335-D	37	108	57.1	54.0	23.8
6336	6336-D	38	108	57.1	54.0	25.4

Sockets can be configured with the following options:

FM = Fixed Magnet SD = Side Magnet TM = Tubular Magnet

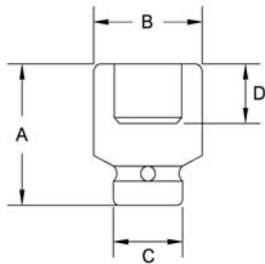
SM = Spring Magnet FL = Fast Lead

Fixed and rotating UHMW plastic sleeves can be special ordered



1" Square Drive Sockets METRIC

6 Point Hex Long Length



Part # 6 Point	Hex Opening	Overall Length (A)	Diameter Nose (B)	Diameter Drive End (C)	Opening Depth (D)
6341	52	95	75	58	54
6342	54	95	78	58	54
6343	55	100	79	62	60
6344	56	100	80	62	60
6345	58	105	85	62	62
6346	60	105	87	62	62
6347	65	120	93	62	75
6348	70	124	98	62	78

Sockets can be configured with the following options:
FM = Fixed Magnet SD = Side Magnet TM = Tubular Magnet
SM = Spring Magnet FL = Fast Lead
Fixed and rotating UHMW plastic sleeves can be special ordered

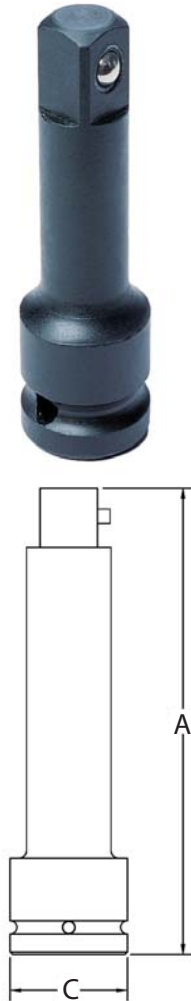
1" Square Drive METRIC Universal Socket 6 Point



Part # 6 Point	Hex Opening	Overall Length (A)	Diameter Nose (B)	Diameter Drive End (C)	Opening Depth (D)
UA6500	24	132	40	58	20
UA6501	26	132	42	58	20
UA6502	27	132	44	58	20
UA6503	29	132	48	58	20
UA6504	30	132	50	58	20
UA6505	32	132	52	58	20
UA6506	33	132	53	58	21
UA6507	34	132	55	58	21
UA6508	35	132	55	58	23
UA6509	36	132	56	58	23
UA6510	38	137	59	58	24
UA6511	41	137	63	58	26
UA6512	42	137	64	58	26
UA6513	43	137	66	58	26
UA6514	44	137	67	58	26
UA6515	45	142	68	58	30
UA6516	46	142	69	58	30
UA6517	47	142	72	58	30
UA6518	48	142	73	58	30
UA6519	50	142	74	58	31

Sockets can be configured with the following options:
FM = Fixed Magnet

1" Square Drive Extensions



Part #	Diameter Drive End (C)	Overall Length (A)
E-6360	2	2 13/16
E-6361	2	4
E-6362	2	5
E-6363	2	6
E-6364	2	7
E-6365	2	8
E-6366	2	9
E-6367	2	10
E-6368	2	11
E-6369	2	12
E-6370	2	13
E-6371	2	14
E-6372	2	15
E-6373	2	16
E-6374	2	17
E-6375	2	18
E-6376	2	19
E-6377	2	20
E-6378	2	21
E-6379	2	22
E-6380	2	23
E-6381	2	24

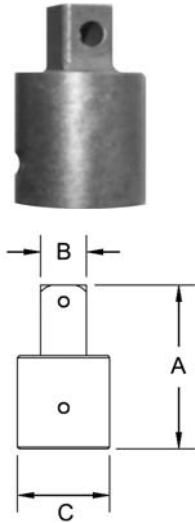
Sockets can be configured with the following options:

P = Pin Lock

B = Ball Lock

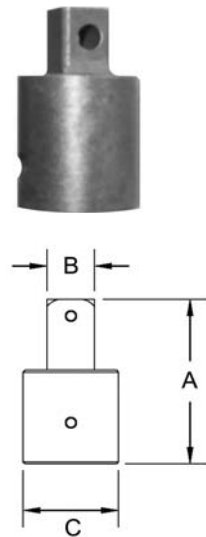
UHMW plastic sleeves can be special ordered

1" Square Drive Adapters 3/4" to 1 1/2" Male Square



Part #	Male Square (B)	Female Square (C)	Overall Length (A)
A-6400	3/4	1	2 13/16
A-6401	3/4	1	4
A-6402	3/4	1	6
A-6403	3/4	1	8
A-6404	1 1/2	1	3 9/16

1" Square Drive Universal Adapters



Part #	Male Square (B)	Female Square (C)	Overall Length (A)	Largest Diameter
6425	3/4	1	4 3/4	2
6426	1	1	5	2

Sockets can be configured with the following options:

P = Pin Lock

B = Ball Lock