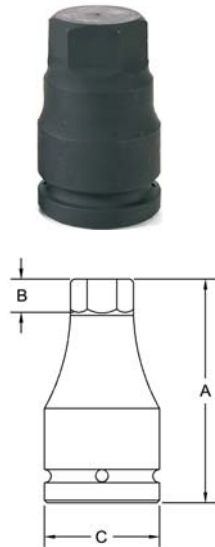


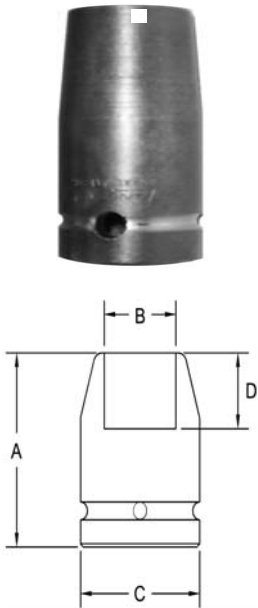
# 3/4" Square Drive Impact Hex Drivers



Part # Hex	Hex Size	Overall Length (A)	Depth Nose (B)	Diameter Drive End (C)
0290	1/2	3.94	.79	1.73
0291	9/16	3.94	.79	1.73
0292	5/8	3.94	.79	1.73
0293	3/4	3.94	.79	1.73
0294	13/16	3.94	.79	1.73
0295	7/8	3.94	.79	1.73
0296	1	3.94	.79	1.73
0297	1 1/16	3.94	.79	1.73
0298	1 1/8	3.94	.79	1.73
0299	1 3/16	3.94	.79	1.73
0300	1 1/4	3.94	.79	1.73

# 3/4" Square Drive Sockets

## 6 Point and Double Hex, Standard Length

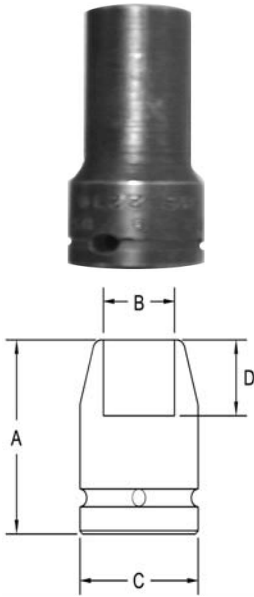


Part # 6 Point	Part # Double Hex	Hex Opening	Overall Length (A)	Diameter Nose (B)	Diameter Drive End (C)	Opening Depth (D)
5100	5100-D	1/4	2	.812	1.50	.343
5101	5101-D	9/16	2	.875	1.50	.437
5102	5102-D	5/8	2	1.06	1.50	.437
5103	5103-D	11/16	2	1.12	1.50	.437
5104	5104-D	3/4	2	1.25	1.50	.468
5105	5105-D	13/16	2	1.37	1.50	.531
5106	5106-D	7/8	2	1.50	1.50	.562
5107	5107-D	15/16	2	1.50	1.50	.625
5108	5108-D	1	2	1.62	1.62	.625
5109	5109-D	1 1/16	2	1.75	1.75	.687
5110	5110-D	1 1/8	2.12	1.75	1.75	.750
5111	5111-D	1 3/16	2.12	1.87	1.75	.750
5112	5112-D	1 1/4	2.12	2.00	1.75	.812
5113	5113-D	1 5/16	2.12	2.00	1.75	.812
5114	5114-D	1 3/8	2.12	2.12	2.12	.812
5115	5115-D	1 7/16	2.25	2.25	2.12	.937
5116	5116-D	1 1/2	2.25	2.25	2.12	1.00
5117	5117-D	1 9/16	2.25	2.37	2.12	1.00
5118	5118-D	1 5/8	2.25	2.50	2.12	1.12
5119	5119-D	1 11/16	2.25	2.50	2.12	1.12
5120	5120-D	1 3/4	2.25	2.62	2.12	1.12
5121	5121-D	1 13/16	2.25	2.75	2.12	1.25
5122	5122-D	1 7/8	2.25	2.75	2.12	1.25
5123	5123-D	1 15/16	2.25	2.87	2.12	1.25
5124	5124-D	2	2.37	2.87	2.12	1.37
5125	5125-D	2 1/16	2.37	3.00	2.12	1.37
5126	5126-D	2 1/8	2.37	3.12	2.12	1.37
5127	5127-D	2 3/16	2.50	3.12	2.12	1.50
5128	5128-D	2 1/4	2.50	3.25	2.12	1.50
5129	5129-D	2 5/16	2.50	3.37	2.12	1.50
5130	5130-D	2 3/8	2.62	3.50	2.12	1.62
5131	5131-D	2 7/16	2.62	3.50	2.12	1.62
5132	5132-D	2 1/2	2.62	3.50	2.12	1.62

**Sockets can be configured with the following options:**  
**FM = Fixed Magnet    SD = Side Magnet    TM = Tubular Magnet**  
**SM = Spring Magnet    FL = Fast Lead**  
**Fixed and rotating UHMW plastic sleeves can be special ordered**

# 3/4" Square Drive Sockets

## 6 Point and Double Hex, Thin Wall, Standard Length

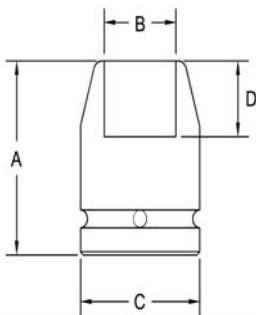


Part # 6 Point	Part # Double Hex	Hex Opening	Overall Length (A)	Diameter Nose (B)	Diameter Drive End (C)	Opening Depth (D)
5152	5152-D	3/4	2.00	1.12	1.37	.468
5153	5153-D	13/16	2.00	1.25	1.37	.531
5154	5154-D	7/8	2.00	1.31	1.37	.562
5155	5155-D	15/16	2.00	1.37	1.37	.625
5156	5156-D	1	2.00	1.43	1.43	.625
5157	5157-D	1 1/16	2.00	1.50	1.50	.687
5158	5158-D	1 1/8	2.12	1.62	1.62	.750
5159	5159-D	1 3/16	2.12	1.62	1.62	.750
5160	5160-D	1 1/4	2.12	1.75	1.75	.812
5161	5161-D	1 5/16	2.12	1.87	1.75	.812
5162	5162-D	1 3/8	2.12	2.00	1.75	.812
5163	5163-D	1 7/8	2.25	2.00	1.75	.937
5164	5164-D	1 1/2	2.25	2.12	2.12	1.00
5165	5165-D	1 9/16	2.25	2.18	2.12	1.12
5166	5166-D	1 5/8	2.25	2.25	2.12	1.12
5167	5167-D	1 11/16	2.25	2.37	2.12	1.12
5168	5168-D	1 3/4	2.25	2.43	2.12	1.12
5169	5169-D	1 13/16	2.25	2.50	2.12	1.25
5170	5170-D	1 7/8	2.25	2.62	2.12	1.25
5171	5171-D	2	2.37	2.75	2.18	1.37
5172	5172-D	2 1/16	2.37	2.81	2.62	1.37
5173	5173-D	2 3/16	2.37	3.00	2.62	1.37
5174	5174-D	2 1/4	2.37	3.00	2.62	1.37

**Sockets can be configured with the following options:**  
**FM = Fixed Magnet    SD = Side Magnet    TM = Tubular Magnet**  
**SM = Spring Magnet    FL = Fast Lead**  
**Fixed and rotating UHMW plastic sleeves can be special ordered**

# 3/4" Square Drive Sockets

## 6 Point and Double Hex, Extra Long Length

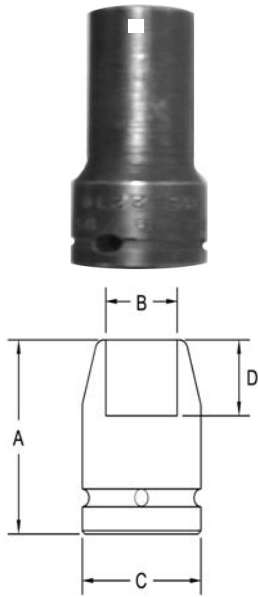


Part # 6 Point	Part # Double Hex	Hex Opening	Overall Length (A)	Diameter Nose (B)	Diameter Drive End (C)	Opening Depth (D)
5195	5195-D	5/8	4	1.06	1.50	.437
5196	5196-D	11/16	4	1.12	1.50	.437
5197	5197-D	3/4	4	1.25	1.50	.468
5198	5198-D	13/16	4	1.37	1.50	.531
5199	5199-D	7/8	4	1.43	1.50	.562
5200	5200-D	15/16	4	1.50	1.50	.625
5201	5201-D	1	4	1.50	1.50	.625
5202	5202-D	1 1/16	4	1.62	1.62	.687
5203	5203-D	1 1/8	4	1.75	1.75	.750
5204	5204-D	1 3/16	4	1.75	1.75	.750
5205	5205-D	1 1/4	4	1.87	1.75	.812
5206	5206-D	1 5/16	4	2.00	1.75	.812
5207	5207-D	1 3/8	4	2.12	2.12	.812
5208	5208-D	1 7/16	4	2.12	2.12	.937
5209	5209-D	1 1/2	4	2.25	2.12	1.00
5210	5210-D	1 9/16	4	2.37	2.12	1.00
5211	5211-D	1 5/8	4	2.50	2.12	1.12
5212	5212-D	1 11/16	4	2.50	2.12	1.12
5213	5213-D	1 3/4	4	2.62	2.12	1.12
5214	5214-D	1 13/16	4	2.75	2.12	1.25
5215	5215-D	1 7/8	4	2.75	2.12	1.25
5216	5216-D	1 15/16	4	2.75	2.12	1.25
5217	5217-D	2	4.12	2.87	2.12	1.37
5218	5218-D	2 1/4	4.25	3.25	2.12	1.50
5219	5219-D	2 3/8	4.25	3.37	2.12	1.62

**Sockets can be configured with the following options:**  
**FM = Fixed Magnet    SD = Side Magnet    TM = Tubular Magnet**  
**SM = Spring Magnet    FL = Fast Lead**  
**Fixed and rotating UHMW plastic sleeves can be special ordered**

# 3/4" Square Drive Sockets

## 6 Point and Double Hex, Thin Wall, Extra Long Length

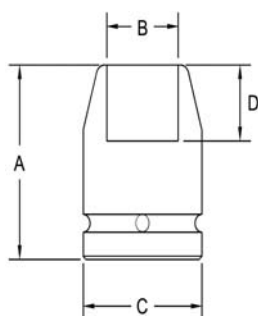


Part # 6 Point	Part # Double Hex	Hex Opening	Overall Length (A)	Diameter Nose (B)	Diameter Drive End (C)	Opening Depth (D)
5240	5240-D	3/4	4	1.12	1.37	.468
5241	5241-D	13/16	4	1.25	1.37	.531
5242	5242-D	7/8	4	1.37	1.37	.562
5243	5243-D	15/16	4	1.37	1.37	.625
5244	5244-D	1	4	1.43	1.43	.625
5245	5245-D	1 1/16	4	1.50	1.50	.687
5246	5246-D	1 1/8	4	1.62	1.62	.750
5247	5247-D	1 3/16	4	1.68	1.68	.750
5248	5248-D	1 1/4	4	1.75	1.75	.812
5249	5249-D	1 5/16	4	1.87	1.75	.812
5250	5250-D	1 3/8	4	2.00	1.75	.812
5251	5251-D	1 7/16	4	2.00	1.75	.937
5252	5252-D	1 1/2	4	2.12	2.12	1.00
5253	5253-D	1 5/8	4	2.25	2.12	1.12
5254	5254-D	1 1/4	4	2.50	2.12	1.12
5255	5255-D	2	4.12	2.75	2.12	1.37

**Sockets can be configured with the following options:**  
**FM = Fixed Magnet    SD = Side Magnet    TM = Tubular Magnet**  
**SM = Spring Magnet    FL = Fast Lead**  
**Fixed and rotating UHMW plastic sleeves can be special ordered**

# 3/4" Square Drive Sockets

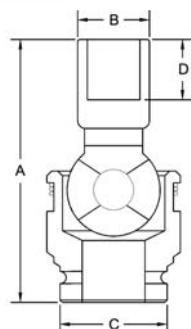
## Single Square and Double Square, Standard Length



Part # Square	Part # Double Sq	Square Opening	Overall Length (A)	Diameter Nose (B)	Diameter Drive End (C)	Opening Depth (D)
5275	5275-D	5/8	2	1.25	1.50	.437
5276	5276-D	11/16	2	1.37	1.50	.437
5277	5277-D	3/4	2	1.50	1.50	.468
5278	5278-D	13/16	2	1.62	1.62	.531
5279	5279-D	7/8	2	1.75	1.75	.625
5280	5280-D	15/16	2.12	1.87	1.75	.625
5281	5281-D	1	2.12	2.00	1.75	.625
5282	5282-D	1 1/16	2.12	2.00	1.75	.687
5283	5283-D	1 1/8	2.12	2.12	2.12	.750
5284	5284-D	1 3/16	2.12	2.25	2.12	.625
5285	5285-D	1 1/4	2.12	2.25	2.12	.625
5286	5286-D	1 5/16	2.12	2.25	2.12	.625

**Sockets can be configured with the following options:**  
**FM = Fixed Magnet    SD = Side Magnet    TM = Tubular Magnet**  
**SM = Spring Magnet    FL = Fast Lead**  
 Fixed and rotating UHMW plastic sleeves can be special ordered

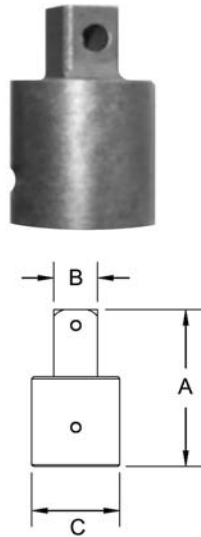
# 3/4" Square Drive Universal Wrenches 6 Point



Part # 6 Point	Hex Opening	Overall Length (A)	Socket Diameter (C)	Nose End Diameter (B)	Clearance Depth (D)
UA5306	15/16	3.74	1.73	1.54	.51
UA5308	1 1/16	3.94	1.73	1.69	.67
UA5311	1 1/8	3.94	1.73	1.73	.71
UA5313	1 1/4	4.13	1.73	1.93	.79
UA5314	1 5/16	4.13	1.73	2.01	.83
UA5315	1 7/16	4.32	1.73	2.13	.91
UA5316	1 1/2	4.32	1.73	2.24	.94
UA5317	1 5/8	4.53	1.73	2.36	1.06
UA5318	1 7/8	4.53	1.73	2.68	1.18

**Sockets can be configured with the following options:**  
**FM = Fixed Magnet**

# 3/4" Square Drive Adapters 1/2" to 1" Male Square



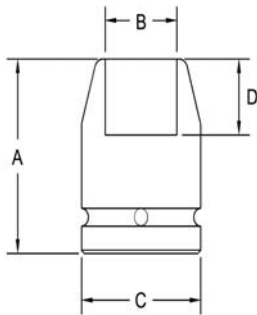
Part #	Male Square (B)	Female Square (C)	Overall Length (A)
A-5468	1/2	3/4	2
A-5469	1/2	3/4	3
A-5470	1/2	3/4	4
A-5471	1/2	3/4	5
A-5472	1/2	3/4	6
A-5473	1/2	3/4	7
A-5474	1/2	3/4	8
A-5475	1/2	3/4	9
A-5476	1/2	3/4	10
A-5477	5/8	3/4	2
A-5478	5/8	3/4	3
A-5479	5/8	3/4	4
A-5480	5/8	3/4	5
A-5481	5/8	3/4	6
A-5482	5/8	3/4	7
A-5483	1	3/4	3
A-5484	1	3/4	4
A-5485	1	3/4	5
A-5486	1	3/4	6
A-5487	1	3/4	7

**Sockets can be configured with the following options:**

**P = Pin Lock**

**B = Ball Lock**

# 3/4" Square Drive Sockets METRIC 6 Point and Double Hex, Standard Length



Part # 6 Point	Part # Double Hex	Hex Opening	Overall Length (A)	Diameter Nose (B)	Diameter Drive End (C)	Opening Depth (D)
5338	5338-D	17	51	31.8	38.1	11.2
5339	5339-D	18	51	31.8	38.1	11.2
5340	5340-D	19	51	31.8	38.1	11.9
5341	5341-D	20	51	33.3	38.1	11.9
5342	5342-D	21	51	34.9	38.1	13.5
5343	5343-D	22	51	38.1	38.1	14.3
5344	5344-D	23	51	33.3	34.9	14.3
5345	5345-D	24	51	38.1	38.1	15.9
5346	5346-D	24	51	34.9	34.9	15.9
5347	5347-D	25	51	41.3	41.3	15.9
5348	5348-D	26	51	41.3	41.3	15.9
5349	5349-D	27	51	44.4	44.4	17.5
5350	5350-D	27	51	38.1	38.1	17.5
5351	5351-D	28	51	44.4	44.4	19.1
5352	5352-D	29	54	47.6	44.4	19.1
5353	5353-D	30	54	47.6	44.4	19.1
5354	5354-D	30	54	41.3	41.3	19.1
5355	5355-D	32	54	50.8	44.4	20.6
5356	5356-D	32	54	44.4	44.4	20.6
5357	5357-D	33	54	50.8	44.4	20.6
5358	5358-D	34	54	54.0	54.0	20.6
5359	5359-D	35	54	54.0	54.0	20.6
5360	5360-D	36	57	57.1	54.0	23.8
5361	5361-D	37	57	57.1	54.0	23.8
5362	5362-D	38	57	57.1	54.0	25.4
5363	5363-D	41	57	63.5	54.0	31.8
5364	5364-D	46	57	69.9	54.0	31.8

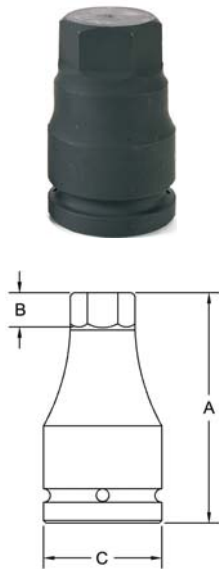
**Sockets can be configured with the following options:**

**FM = Fixed Magnet    SD = Side Magnet    TM = Tubular Magnet**  
**SM = Spring Magnet    FL = Fast Lead**

**Fixed and rotating UHMW plastic sleeves can be special ordered**

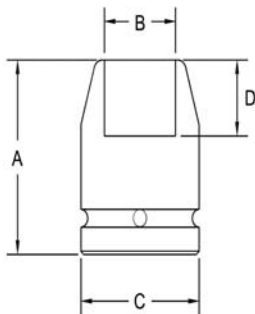


# 3/4" Square Drive METRIC Impact Hex Drivers



Part # Hex	Hex Size	Overall Length (A)	Depth Nose (B)	Diameter Drive End (C)
0305	12	3.94	.79	1.73
0306	14	3.94	.79	1.73
0307	17	3.94	.79	1.73
0308	19	3.94	.79	1.73
0309	22	3.94	.79	1.73
0310	24	3.94	.79	1.73
0311	27	3.94	.79	1.73
0312	30	3.94	.79	1.73

# 3/4" Square Drive Sockets METRIC 6 Point and Double Hex, Extra Long Length



Part # 6 Point	Part # Double Hex	Hex Opening	Overall Length (A)	Diameter Nose (B)	Diameter Drive End (C)	Opening Depth (D)
5384	5384-D	21	102	34.9	38.1	13.5
5385	5385-D	21	102	34.9	34.9	13.5
5386	5386-D	22	102	36.5	38.1	14.3
5387	5387-D	22	102	34.9	34.9	14.3
5388	5388-D	23	102	38.1	38.1	15.9
5389	5389-D	24	102	38.1	38.1	15.9
5390	5390-D	24	102	34.9	34.9	15.9
5391	5391-D	25	102	38.1	38.1	15.9
5392	5392-D	26	102	41.3	41.3	15.9
5393	5393-D	27	102	41.3	41.3	17.5
5394	5394-D	27	101.6	38.1	38.1	17.5
5395	5395-D	28	101.6	44.4	44.4	19.1
5396	5396-D	29	101.6	44.4	44.4	19.1
5397	5397-D	30	101.6	44.4	44.4	19.1
5398	5398-D	30	101.6	42.9	42.9	19.1
5399	5399-D	32	101.6	47.6	44.4	20.6
5400	5400-D	33	101.6	50.8	44.4	20.6
5401	5401-D	34	101.6	54.0	54.0	20.6
5402	5402-D	35	101.6	54.0	54.0	20.6
5403	5403-D	36	101.6	54.0	54.0	23.8
5404	5404-D	41	101.6	63.5	54.0	28.6

**Sockets can be configured with the following options:**  
**FM = Fixed Magnet    SD = Side Magnet    TM = Tubular Magnet**  
**SM = Spring Magnet    FL = Fast Lead**  
**Fixed and rotating UHMW plastic sleeves can be special ordered**

# 3/4" Square Drive Extensions



Part #	Diameter Drive End (C)	Overall Length (A)
E-5425	1.37	2 1/4
E-5426	1.37	3
E-5427	1.37	4
E-5428	1.37	5
E-5429	1.37	6
E-5430	1.37	7
E-5431	1.37	8
E-5432	1.37	9
E-5433	1.37	10
E-5434	1.37	11
E-5435	1.37	12
E-5436	1.37	13
E-5437	1.37	14
E-5438	1.37	15
E-5439	1.37	16
E-5440	1.37	17
E-5441	1.37	18
E-5442	1.37	19
E-5443	1.37	20
E-5444	1.37	21
E-5445	1.37	22
E-5446	1.37	23
E-5447	1.37	24

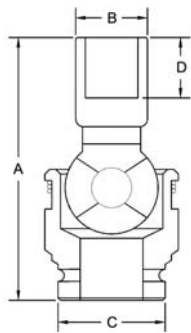
**Sockets can be configured with the following options:**

**P = Pin Lock**

**B = Ball Lock**

**UHMW plastic sleeves can be special ordered**

# 3/4" Square Drive Sockets METRIC Universal Wrenches 6 Point



Part # 6 Point	Hex Opening	Overall Length (A)	Drive End Diameter (C)	Nose End Diameter (B)	Clearance Depth (D)
UA5515	19	95	44	32	13
UA5516	20	95	44	34	14
UA5517	21	95	44	35	14
UA5518	22	95	44	37	14
UA5519	23	95	44	38	14
UA5520	24	95	44	39	15
UA5521	25	100	44	41	16
UA5522	26	100	44	42	16
UA5523	27	100	44	43	17
UA5524	28	100	44	44	18
UA5525	29	100	44	46	18
UA5526	30	100	44	47	18
UA5527	31	105	44	48	19
UA5528	32	105	44	49	20
UA5529	33	105	44	51	21
UA5530	34	105	44	52	22
UA5531	35	105	44	53	22
UA5532	36	110	44	54	23
UA5533	37	110	44	56	24
UA5534	38	110	44	57	24
UA5534	39	110	44	59	24
UA5535	40	110	44	60	24
UA5536	41	115	44	60	27
UA5537	42	115	44	62	27
UA5538	43	115	44	63	27
UA5539	44	115	44	64	30
UA5540	45	115	44	66	30
UA5541	46	115	44	66	30

**Sockets can be configured with the following options:**  
**FM = Fixed Magnet**