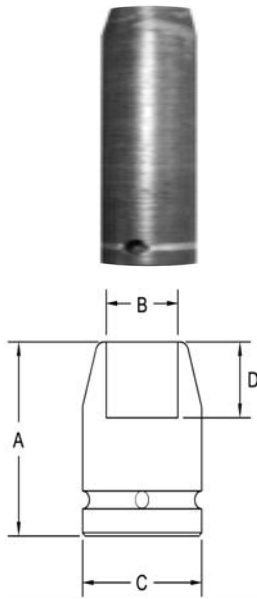
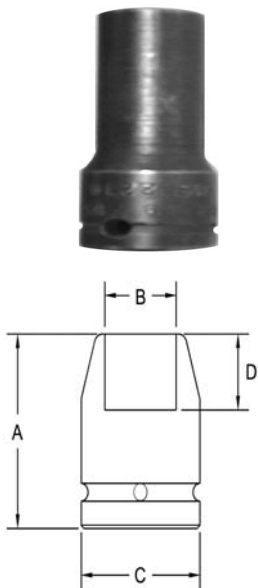


5/8" Square Drive Sockets 6 Point and Double Hex, Extra Long Length



Part # 6 Point	Part # Double Hex	Hex Opening	Overall Length (A)	Diameter Nose (B)	Diameter Drive End (C)	Opening Depth (D)
4067	4067-D	5/8	3.50	1.00	1.25	.437
4068	4068-D	11/16	3.50	1.12	1.25	.437
4069	4069-D	3/4	3.50	1.25	1.25	.468
4070	4070-D	13/16	3.50	1.25	1.25	.531
4071	4071-D	7/8	3.50	1.37	1.37	.562
4072	4072-D	15/16	3.50	1.50	1.50	.625
4073	4073-D	1	3.50	1.62	1.62	.625
4074	4074-D	1 1/16	3.50	1.62	1.62	.687
4075	4075-D	1 1/8	3.50	1.62	1.62	.750
4076	4076-D	1 3/16	3.50	1.75	1.75	.750
4077	4077-D	1 1/4	3.50	1.87	1.87	.812
4078	4078-D	1 5/16	3.50	2.00	2.00	.812
4079	4079-D	1 3/8	3.50	2.00	2.00	.812
4080	4080-D	1 7/16	3.50	2.12	2.12	.937
4081	4081-D	1 1/2	3.50	2.12	2.12	1.00
4082	4082-D	1 5/8	3..75	2.25	2.25	1.12

6 Point and Double Hex, Thin Wall Extra Long Length



Part # 6 Point	Part # Double Hex	Hex Opening	Overall Length (A)	Diameter Nose (B)	Diameter Drive End (C)	Opening Depth (D)
4102	4102-D	5/8	3.50	.937	1.25	.437
4103	4103-D	11/16	3.50	1.00	1.25	.437
4104	4104-D	3/4	3.50	1.06	1.25	.468
4105	4105-D	13/16	3.50	1.12	1.25	.531
4106	4106-D	7/8	3.50	1.18	1.25	.562
4107	4107-D	15/16	3.50	1.31	1.31	.625

Sockets can be configured with the following options:
FM = Fixed Magnet SD = Side Magnet TM = Tubular Magnet
SM = Spring Magnet FL = Fast Lead
Fixed and rotating UHMW plastic sleeves can be special ordered