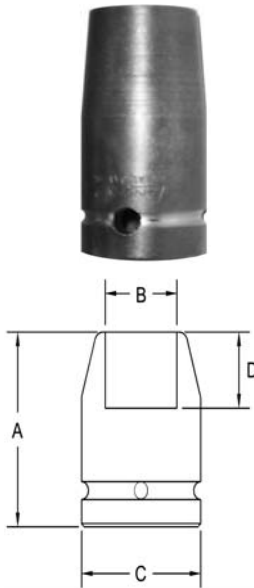


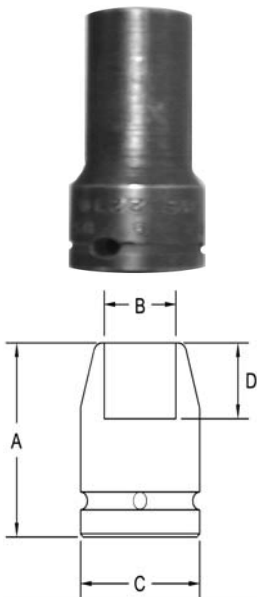
5/8" Square Drive Sockets

6 Point and Double Hex, Standard Length



Part # 6 Point	Part # Double Hex	Hex Opening	Overall Length (A)	Diameter Nose (B)	Diameter Drive End (C)	Opening Depth (D)
4000	4000-D	1/2	1.87	.812	1.25	.343
4001	4001-D	9/16	1.87	.875	1.25	.437
4002	4002-D	5/8	1.87	1.00	1.25	.437
4003	4003-D	11/16	1.87	1.12	1.25	.437
4004	4004-D	3/4	1.87	1.25	1.25	.468
4005	4005-D	13/16	1.87	1.25	1.25	.531
4006	4006-D	7/8	1.87	1.37	1.37	.562
4007	4007-D	15/16	2.00	1.50	1.50	.625
4008	4008-D	1	2.00	1.62	1.62	.625
4009	4009-D	1 1/16	2.00	1.62	1.62	.687
4010	4010-D	1 1/8	2.00	1.62	1.62	.750
4011	4011-D	1 3/16	2.00	1.75	1.75	.750
4012	4012-D	1 1/4	2.00	1.87	1.87	.812
4013	4013-D	1 5/16	2.00	2.00	2.00	.812
4014	4014-D	1 3/8	2.12	2.00	2.00	.812
4015	4015-D	1 7/16	2.12	2.12	2.12	.937
4016	4016-D	1 1/2	2.25	2.12	2.12	1.00

6 Point and Double Hex, Thin Wall Standard Length

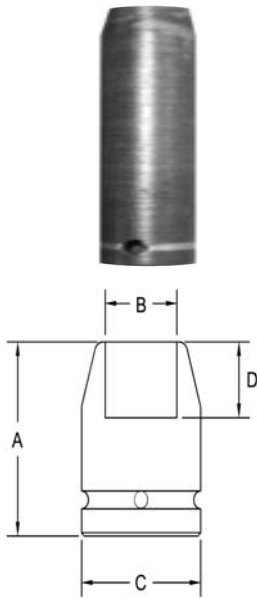


Part # 6 Point	Part # Double Hex	Hex Opening	Overall Length (A)	Diameter Nose (B)	Diameter Drive End (C)	Opening Depth (D)
4036	4036-D	7/16	1.87	.687	1.25	.281
4037	4037-D	9/16	1.87	.875	1.25	.437
4038	4038-D	5/8	1.87	.937	1.25	.437
4039	4039-D	3/4	1.87	1.06	1.25	.468
4040	4040-D	13/16	1.87	1.12	1.25	.531
4041	4041-D	7/8	1.87	1.18	1.25	.562
4042	4042-D	15/16	2.00	1.31	1.31	.625
4043	4043-D	1	2.00	1.37	1.37	.625
4044	4044-D	1 1/16	2.00	1.50	1.50	.687
4045	4045-D	1 1/8	2.00	1.50	1.50	.750
4046	4046-D	1 1/4	2.00	1.75	1.75	.812
4047	4047-D	1 3/8	2.12	1.87	1.87	.812

Sockets can be configured with the following options:
FM = Fixed Magnet SD = Side Magnet TM = Tubular Magnet
SM = Spring Magnet FL = Fast Lead
Fixed and rotating UHMW plastic sleeves can be special ordered

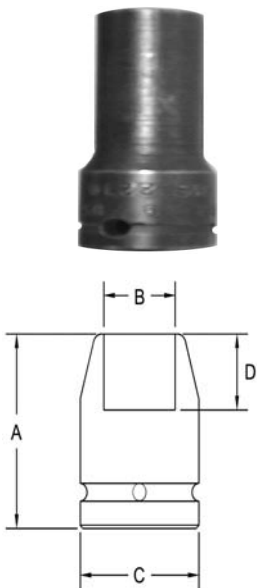
5/8" Square Drive Sockets

6 Point and Double Hex, Extra Long Length



Part # 6 Point	Part # Double Hex	Hex Opening	Overall Length (A)	Diameter Nose (B)	Diameter Drive End (C)	Opening Depth (D)
4067	4067-D	5/8	3.50	1.00	1.25	.437
4068	4068-D	11/16	3.50	1.12	1.25	.437
4069	4069-D	3/4	3.50	1.25	1.25	.468
4070	4070-D	13/16	3.50	1.25	1.25	.531
4071	4071-D	7/8	3.50	1.37	1.37	.562
4072	4072-D	15/16	3.50	1.50	1.50	.625
4073	4073-D	1	3.50	1.62	1.62	.625
4074	4074-D	1 1/16	3.50	1.62	1.62	.687
4075	4075-D	1 1/8	3.50	1.62	1.62	.750
4076	4076-D	1 3/16	3.50	1.75	1.75	.750
4077	4077-D	1 1/4	3.50	1.87	1.87	.812
4078	4078-D	1 5/16	3.50	2.00	2.00	.812
4079	4079-D	1 3/8	3.50	2.00	2.00	.812
4080	4080-D	1 7/16	3.50	2.12	2.12	.937
4081	4081-D	1 1/2	3.50	2.12	2.12	1.00
4082	4082-D	1 5/8	3.75	2.25	2.25	1.12

6 Point and Double Hex, Thin Wall Extra Long Length

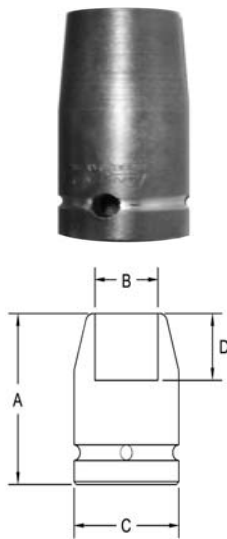


Part # 6 Point	Part # Double Hex	Hex Opening	Overall Length (A)	Diameter Nose (B)	Diameter Drive End (C)	Opening Depth (D)
4102	4102-D	5/8	3.50	.937	1.25	.437
4103	4103-D	11/16	3.50	1.00	1.25	.437
4104	4104-D	3/4	3.50	1.06	1.25	.468
4105	4105-D	13/16	3.50	1.12	1.25	.531
4106	4106-D	7/8	3.50	1.18	1.25	.562
4107	4107-D	15/16	3.50	1.31	1.31	.625

Sockets can be configured with the following options:
FM = Fixed Magnet SD = Side Magnet TM = Tubular Magnet
SM = Spring Magnet FL = Fast Lead
Fixed and rotating UHMW plastic sleeves can be special ordered

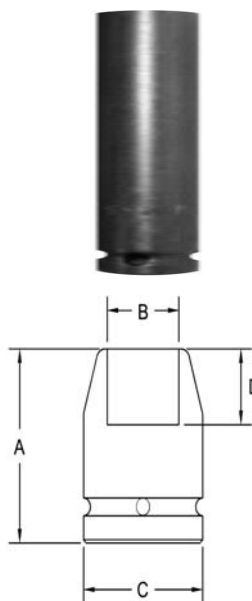
5/8' Square Drive Sockets

Surface Drive, Standard Length



Part # Surface Drive	Hex Opening	Overall Length (A)	Diameter Nose (B)	Diameter Drive End (C)	Opening Depth (D)
SF-4127	9/16	1.87	.875	1.25	.437
SF-4128	9/16	1.87	.875	1.25	.437
SF-4129	5/8	1.87	1.00	1.25	.437
SF-4130	11/16	1.87	1.12	1.25	.437
SF-4131	3/4	1.87	1.25	1.25	.468
SF-4131	3/4	1.87	1.06	1.25	.468
SF-4131	13/16	1.87	1.25	1.25	.531
SF-4132	7/8	1.87	1.37	1.37	.562
SF-4133	15/16	2.00	1.50	1.50	.625
SF-4134	1	2.00	1.62	1.62	.625

Surface Drive, Extra Long Length



Part # Surface Drive	Hex Opening	Overall Length (A)	Diameter Nose (B)	Diameter Drive End (C)	Opening Depth (D)
SF-4154	5/8	3.50	1.00	1.25	.437
SF-4155	5/8	3.50	.937	1.25	.437
SF-4156	11/16	3.50	1.00	1.25	.437
SF-4157	3/4	3.50	1.25	1.25	.468
SF-4158	3/4	3.50	1.06	1.25	.468
SF-4159	13/16	3.50	1.25	1.25	.531
SF-4160	13/16	3.50	1.12	1.25	.531
SF-4161	7/8	3.50	1.37	1.37	.562
SF-4162	15/16	3.50	1.50	1.50	.625

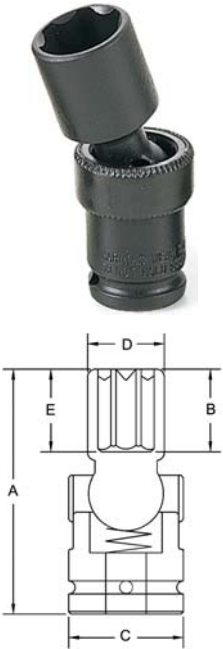
Sockets can be configured with the following options:

FM = Fixed Magnet SD = Side Magnet TM = Tubular Magnet
SM = Spring Magnet FL = Fast Lead

Fixed and rotating UHMW plastic sleeves can be special ordered



5/8" Square Drive Universal Wrenches 6 Point



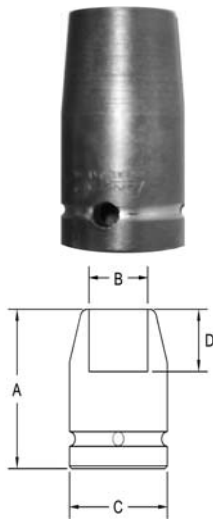
Part # 6 Point	Hex Opening	Overall Length (A)	Socket Length (B)	Socket Diameter (C)	Nose End Diameter (D)	Clearance Depth (E)
UA418	9/16	2.92	1.25	1.25	2.15	.515
UA419	5/8	2.92	1.25	1.25	.875	.515
UA420	3/4	3.04	1.37	1.25	1.03	.640
UA421	13/16	3.04	1.37	1.25	1.12	.640
UA422	7/8	3.12	1.75	1.50	1.31	.906
UA423	15/16	3.04	1.37	1.31	1.31	.640
UA424	15/16	3.12	1.75	1.50	1.37	.906
UA425	1 1/8	3.25	1.87	1.62	1.62	1.03

Sockets can be configured with the following options:

FM = Fixed Magnet

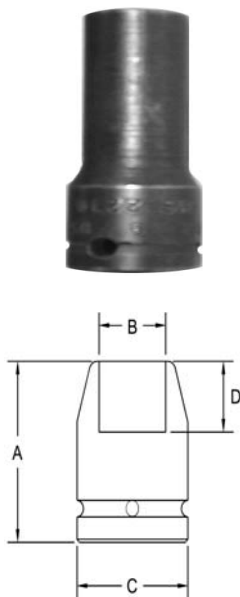
5/8" Square Drive Sockets METRIC

6 Point and Surface Drive, Standard Length



Part # 6 Point	Part # Surface Drive	Hex Opening	Overall Length (A)	Diameter Nose (B)	Diameter Drive End (C)	Opening Depth (D)
4300	SF-4300	15	48	23.8	31.8	11.1
4301	SF-4301	16	48	25.4	31.8	11.1
4302	SF-4302	17	48	28.6	31.8	11.1
4303	SF-4303	18	48	28.5	31.8	11.1
4304	SF-4304	19	48	31.8	31.8	11.9
4305	SF-4305	20	48	31.8	31.8	11.9
4306	SF-4306	21	48	31.8	31.8	13.5
4307	SF-4307	22	48	34.9	34.9	14.3
4308	SF-4308	23	48	34.9	34.9	15.9
4309	SF-4309	24	51	38.1	38.1	15.9

6 Point and Surface Drive, Extra Long Length



Part # 6 Point	Part # Surface Drive	Hex Opening	Overall Length (A)	Diameter Nose (B)	Diameter Drive End (C)	Opening Depth (D)
4349	SF-4349	15	89	23.8	31.8	11.1
4350	SF-4350	17	89	25.4	31.8	11.1
4351	SF-4351	18	89	28.6	31.8	11.1
4352	SF-4352	19	89	31.8	31.8	11.9
4353	SF-4353	21	89	31.8	31.8	13.5
4354	SF-4354	22	89	34.9	34.9	14.3
4355	SF-4355	23	89	34.9	34.9	15.9
4356	SF-4356	24	89	38.1	38.1	15.9

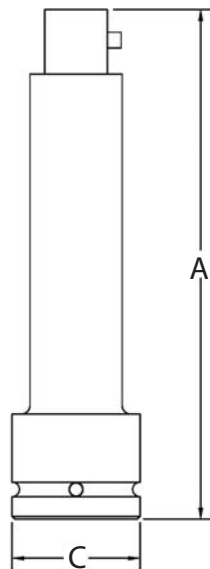
Sockets can be configured with the following options:

FM = Fixed Magnet SD = Side Magnet TM = Tubular Magnet

SM = Spring Magnet FL = Fast Lead

Fixed and rotating UHMW plastic sleeves can be special ordered

5/8" Square Drive Extensions



Part #	Diameter Drive End (C)	Overall Length (A)
E-4376	1.25	1 7/8
E-4377	1.25	1 7/8
E-4378	1.25	3
E-4379	1.25	4
E-4380	1.25	5
E-4381	1.25	6
E-4382	1.25	7
E-4383	1.25	8
E-4384	1.25	9
E-4385	1.25	10
E-4386	1.25	11
E-4387	1.25	12
E-4388	1.25	13
E-4389	1.25	14
E-4390	1.25	15
E-4391	1.25	16
E-4392	1.25	17
E-4393	1.25	18
E-4394	1.25	19
E-4395	1.25	20
E-4396	.1.25	21
E-4397	1.25	22
E-4398	1.25	23
E-4399	1.25	24

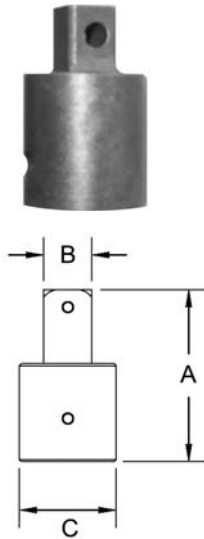
Sockets can be configured with the following options:

P = Pin Lock

B = Ball Lock

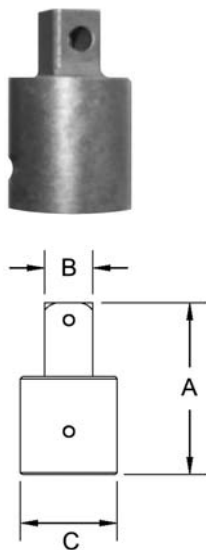
UHMW plastic sleeves can be special ordered

5/8" Square Drive Adapters 1/2" to 3/4" Male Square



Part #	Male Square (B)	Female Square (C)	Overall Length (A)
A-4420	1/2	5/8	1 7/8
A-4421	1/2	5/8	1 7/8
A-4422	1/2	5/8	3
A-4423	1/2	5/8	4
A-4424	1/2	5/8	5
A-4425	1/2	5/8	6
A-4426	1/2	5/8	7
A-4427	1/2	5/8	8
A-4428	1/2	5/8	9
A-4429	1/2	5/8	10
A-4430	1/2	5/8	11
A-4431	1/2	5/8	12
A-4432	3/4	5/8	1 7/8

5/8 Square Drive Universal Adapters Male Square to Female Square



Part #	Male Square (B)	Female Square (C)	Overall Length (A)	Largest Diameter
4452	1/2	5/8	3.31	1.25
4453	1/2	5/8	3.25	1.25

Sockets can be configured with the following options:

P = Pin Lock

B = Ball Lock