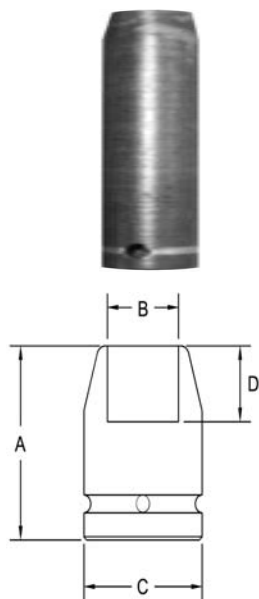


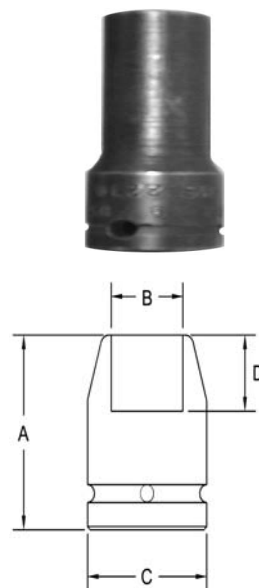
3/8" Square Drive Sockets

Surface Drive, Long and Extra Long Length



Part # Surface Drive	Hex Opening	Overall Length (A)	Diameter Nose (B)	Diameter Drive End (C)	Opening Depth (D)
SF-2188	5/16	2.00	.500	.750	.187
SF-2189	3/8	2.00	.593	.750	.250
SF-2190	3/8	3.50	.593	.750	.250
SF-2191	7/16	2.00	.687	.750	.281
SF-2192	7/16	3.50	.687	.750	.281
SF-2193	1/2	2.00	.812	.812	.343
SF-2194	1/2	3.50	.812	.812	.343
SF-2195	9/16	2.00	.875	.875	.437
SF-2196	9/16	3.50	.875	.875	.437
SF-2197	5/8	2.00	.937	.937	.437
SF-2198	5/8	3.50	.937	.937	.437
SF-2199	11/16	2.00	1.00	1.00	.437
SF-2200	11/16	3.50	1.00	1.00	.437
SF-2201	3/4	2.00	1.06	1.06	.468
SF-2202	3/4	3.50	1.06	1.06	.468
SF-2203	13/16	2.00	1.25	1.25	.531
SF-2204	13/16	3.50	1.25	1.25	.531

Surface Drive Thin Wall, Long Length



Part # Surface Drive	Hex Opening	Overall Length (A)	Diameter Nose (B)	Diameter Drive End (C)	Opening Depth (D)
SF-2220	3/8	2.00	.593	.750	.250
SF-2221	7/16	2.00	.625	.750	.281
SF-2222	1/2	2.00	.750	.750	.343
SF-2223	9/16	2.00	.781	.812	.437
SF-2224	3/4	2.00	1.00	1.00	.468

Sockets can be configured with the following options:
FM = Fixed Magnet SD = Side Magnet TM = Tubular Magnet
SM = Spring Magnet FL = Fast Lead
Fixed and rotating UHMW plastic sleeves can be special ordered