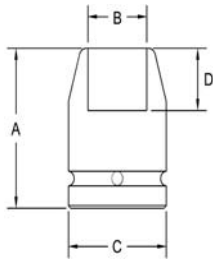


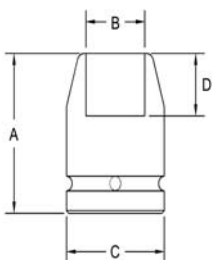
3/8" Square Drive Sockets METRIC

Surface Drive, Thin Wall, Standard Length



| Part # Surface Drive | Hex Opening | Overall Length (A) | Diameter Nose (B) | Diameter Drive End (C) | Opening Depth (D) |
|-------------------------|----------------|-----------------------|----------------------|---------------------------|----------------------|
| SF-2470 | 10 | 31.7 | 15.1 | 19.1 | 6.4 |
| SF-2471 | 10 | 31.7 | 15.1 | 15.1 | 6.4 |
| SF-2472 | 11 | 38.1 | 15.9 | 19.1 | 7.2 |
| SF-2473 | 12 | 38.1 | 17.5 | 19.1 | 7.2 |
| SF-2474 | 13 | 38.1 | 19.1 | 19.1 | 8.7 |
| SF-2475 | 14 | 38.1 | 19.1 | 19.1 | 8.7 |
| SF-2476 | 15 | 38.1 | 20.6 | 20.6 | 11.1 |
| SF-2477 | 16 | 38.1 | 22.2 | 22.2 | 11.1 |
| SF-2478 | 17 | 38.1 | 23.8 | 23.8 | 11.1 |
| SF-2479 | 18 | 38.1 | 23.8 | 23.8 | 11.1 |
| SF-2480 | 19 | 38.1 | 25.4 | 25.4 | 11.9 |

Surface Drive, Long and Extra Long Length



| Part # Surface Drive | Hex Opening | Overall Length (A) | Diameter Nose (B) | Diameter Drive End (C) | Opening Depth (D) |
|-------------------------|----------------|-----------------------|----------------------|---------------------------|----------------------|
| SF-2500 | 8 | 50.8 | 12.7 | 19.1 | 4.8 |
| SF-2501 | 8 | 50.8 | 11.9 | 15.9 | 4.8 |
| SF-2502 | 10 | 50.8 | 16.8 | 19.1 | 6.4 |
| SF-2503 | 10 | 88.9 | 16.8 | 19.1 | 6.4 |
| SF-2504 | 11 | 50.8 | 17.5 | 19.1 | 7.2 |
| SF-2505 | 12 | 50.8 | 19.1 | 19.1 | 7.2 |
| SF-2506 | 13 | 50.8 | 20.6 | 20.6 | 8.7 |
| SF-2507 | 13 | 88.9 | 20.6 | 20.6 | 8.7 |
| SF-2508 | 15 | 50.8 | 22.2 | 22.2 | 11.1 |
| SF-2509 | 15 | 88.9 | 22.2 | 22.2 | 11.1 |
| SF-2510 | 17 | 50.8 | 25.4 | 25.4 | 11.1 |
| SF-2511 | 18 | 50.8 | 25.4 | 25.4 | 11.1 |
| SF-2512 | 19 | 50.8 | 28.6 | 28.0 | 11.9 |

Sockets can be configured with the following options:

FM = Fixed Magnet SD = Side Magnet TM = Tubular Magnet

SM = Spring Magnet FL = Fast Lead

Fixed and rotating UHMW plastic sleeves can be special ordered