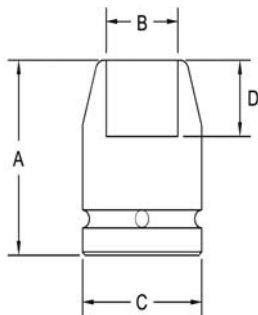


3/8" Square Drive Sockets METRIC

Surface Drive, Short and Standard Length



| Part # Surface Drive | Hex Opening | Overall Length (A) | Diameter Nose (B) | Diameter Drive End (C) | Opening Depth (D) |
|-------------------------|----------------|-----------------------|----------------------|---------------------------|----------------------|
| SF-2430 | 8 | 31.7 | 12.7 | 19.1 | 4.8 |
| SF-2431 | 9 | 31.7 | 15.1 | 19.1 | 4.8 |
| SF-2432 | 10 | 22.2 | 16.8 | 19.1 | 6.4 |
| SF-2433 | 10 | 31.7 | 16.8 | 19.1 | 6.4 |
| SF-2434 | 11 | 22.2 | 17.5 | 19.1 | 7.2 |
| SF-2435 | 11 | 38.1 | 17.5 | 19.1 | 7.2 |
| SF-2436 | 12 | 22.2 | 19.1 | 19.1 | 7.2 |
| SF-2437 | 12 | 38.1 | 19.1 | 19.1 | 7.2 |
| SF-2438 | 13 | 22.2 | 20.6 | 20.6 | 8.7 |
| SF-2439 | 13 | 38.1 | 20.6 | 20.6 | 8.7 |
| SF-2440 | 14 | 22.2 | 22.2 | 22.2 | 11.1 |
| SF-2441 | 14 | 38.1 | 22.2 | 22.2 | 11.1 |
| SF-2442 | 15 | 23.8 | 22.2 | 22.2 | 11.1 |
| SF-2443 | 15 | 38.1 | 22.2 | 22.2 | 11.1 |
| SF-2444 | 16 | 38.1 | 23.8 | 23.8 | 11.1 |
| SF-2445 | 17 | 25.4 | 25.4 | 25.4 | 11.1 |
| SF-2446 | 17 | 38.1 | 25.4 | 25.4 | 11 |
| SF-2447 | 18 | 25.4 | 25.4 | 25.4 | 11.1 |
| SF-2448 | 18 | 38.1 | 25.4 | 25.4 | 11.1 |
| SF-2449 | 18 | 25.4 | 28.6 | 28.6 | 11.9 |
| SF-2450 | 18 | 38.1 | 28.6 | 28.6 | 11.9 |

Sockets can be configured with the following options:
FM = Fixed Magnet SD = Side Magnet TM = Tubular Magnet
SM = Spring Magnet FL = Fast Lead
Fixed and rotating UHMW plastic sleeves can be special ordered