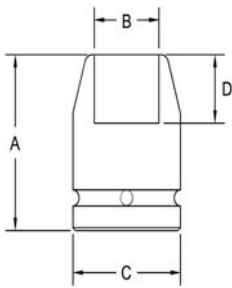


3/8" Square Drive Sockets METRIC

6 Point and Double Hex, Long and Extra Long Length



Part # 6 Point	Part # Double Hex	Hex Opening	Overall Length (A)	Diameter Nose (B)	Diameter Drive End (C)	Opening Depth (D)
2390	2390-D	6	50.8	11.1	19.1	3.9
2391	2391-D	7	50.8	11.1	19.1	4.8
2392	2392-D	8	50.8	12.7	19.1	4.8
2393	2393-D	9	50.8	15.1	19.1	4.8
2394	2394-D	10	50.8	16.8	19.1	6.4
2395	2395-D	10	50.8	14.2	15.9	6.4
2396	2396-D	10	88.9	16.8	19.1	6.4
2397	2397-D	11	50.8	17.5	19.1	7.2
2398	2398-D	12	50.8	19.1	19.1	7.2
2399	2399-D	13	50.8	20.6	20.6	8.7
2400	2400-D	13	88.9	20.6	20.6	8.7
2401	2401-D	14	50.8	22.2	22.2	11.1
2402	2402-D	15	50.8	22.2	22.2	11.1
2403	2403-D	15	88.9	22.2	22.2	11.1
2404	2404-D	16	50.8	23.8	23.8	11.1
2405	2405-D	17	50.8	25.4	25.4	11.1
2406	2406-D	18	50.8	25.4	24.4	11.1
2407	2407-D	19	50.8	28.6	28.6	11.9
2408	2408-D	20	50.8	28.6	28.6	11.9
2409	2409-D	21	50.8	31.7	31.7	13.5
2410	2410-D	22	50.8	31.7	31.7	14.3

Sockets can be configured with the following options:
FM = Fixed Magnet SD = Side Magnet TM = Tubular Magnet
SM = Spring Magnet FL = Fast Lead
Fixed and rotating UHMW plastic sleeves can be special ordered