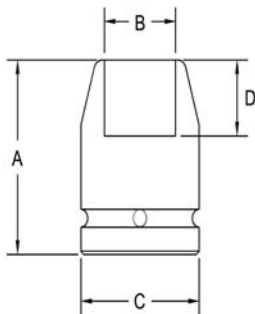


3/4" Square Drive Sockets METRIC 6 Point and Double Hex, Extra Long Length



Part # 6 Point	Part # Double Hex	Hex Opening	Overall Length (A)	Diameter Nose (B)	Diameter Drive End (C)	Opening Depth (D)
5384	5384-D	21	102	34.9	38.1	13.5
5385	5385-D	21	102	34.9	34.9	13.5
5386	5386-D	22	102	36.5	38.1	14.3
5387	5387-D	22	102	34.9	34.9	14.3
5388	5388-D	23	102	38.1	38.1	15.9
5389	5389-D	24	102	38.1	38.1	15.9
5390	5390-D	24	102	34.9	34.9	15.9
5391	5391-D	25	102	38.1	38.1	15.9
5392	5392-D	26	102	41.3	41.3	15.9
5393	5393-D	27	102	41.3	41.3	17.5
5394	5394-D	27	101.6	38.1	38.1	17.5
5395	5395-D	28	101.6	44.4	44.4	19.1
5396	5396-D	29	101.6	44.4	44.4	19.1
5397	5397-D	30	101.6	44.4	44.4	19.1
5398	5398-D	30	101.6	42.9	42.9	19.1
5399	5399-D	32	101.6	47.6	44.4	20.6
5400	5400-D	33	101.6	50.8	44.4	20.6
5401	5401-D	34	101.6	54.0	54.0	20.6
5402	5402-D	35	101.6	54.0	54.0	20.6
5403	5403-D	36	101.6	54.0	54.0	23.8
5404	5404-D	41	101.6	63.5	54.0	28.6

Sockets can be configured with the following options:
FM = Fixed Magnet SD = Side Magnet TM = Tubular Magnet
SM = Spring Magnet FL = Fast Lead
Fixed and rotating UHMW plastic sleeves can be special ordered