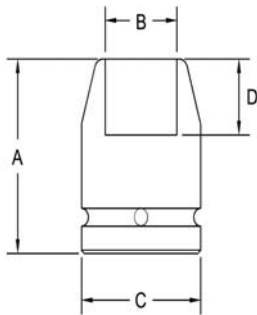


3/4" Square Drive Sockets METRIC 6 Point and Double Hex, Standard Length



Part # 6 Point	Part # Double Hex	Hex Opening	Overall Length (A)	Diameter Nose (B)	Diameter Drive End (C)	Opening Depth (D)
5338	5338-D	17	51	31.8	38.1	11.2
5339	5339-D	18	51	31.8	38.1	11.2
5340	5340-D	19	51	31.8	38.1	11.9
5341	5341-D	20	51	33.3	38.1	11.9
5342	5342-D	21	51	34.9	38.1	13.5
5343	5343-D	22	51	38.1	38.1	14.3
5344	5344-D	23	51	33.3	34.9	14.3
5345	5345-D	24	51	38.1	38.1	15.9
5346	5346-D	24	51	34.9	34.9	15.9
5347	5347-D	25	51	41.3	41.3	15.9
5348	5348-D	26	51	41.3	41.3	15.9
5349	5349-D	27	51	44.4	44.4	17.5
5350	5350-D	27	51	38.1	38.1	17.5
5351	5351-D	28	51	44.4	44.4	19.1
5352	5352-D	29	54	47.6	44.4	19.1
5353	5353-D	30	54	47.6	44.4	19.1
5354	5354-D	30	54	41.3	41.3	19.1
5355	5355-D	32	54	50.8	44.4	20.6
5356	5356-D	32	54	44.4	44.4	20.6
5357	5357-D	33	54	50.8	44.4	20.6
5358	5358-D	34	54	54.0	54.0	20.6
5359	5359-D	35	54	54.0	54.0	20.6
5360	5360-D	36	57	57.1	54.0	23.8
5361	5361-D	37	57	57.1	54.0	23.8
5362	5362-D	38	57	57.1	54.0	25.4
5363	5363-D	41	57	63.5	54.0	31.8
5364	5364-D	46	57	69.9	54.0	31.8

Sockets can be configured with the following options:
FM = Fixed Magnet SD = Side Magnet TM = Tubular Magnet
SM = Spring Magnet FL = Fast Lead
Fixed and rotating UHMW plastic sleeves can be special ordered