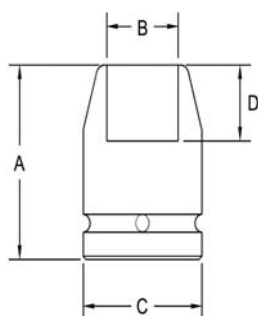


3/4" Square Drive Sockets

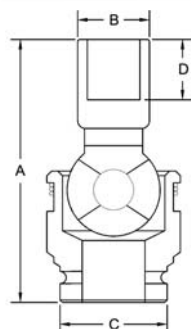
Single Square and Double Square, Standard Length



Part # Square	Part # Double Sq	Square Opening	Overall Length (A)	Diameter Nose (B)	Diameter Drive End (C)	Opening Depth (D)
5275	5275-D	5/8	2	1.25	1.50	.437
5276	5276-D	11/16	2	1.37	1.50	.437
5277	5277-D	3/4	2	1.50	1.50	.468
5278	5278-D	13/16	2	1.62	1.62	.531
5279	5279-D	7/8	2	1.75	1.75	.625
5280	5280-D	15/16	2.12	1.87	1.75	.625
5281	5281-D	1	2.12	2.00	1.75	.625
5282	5282-D	1 1/16	2.12	2.00	1.75	.687
5283	5283-D	1 1/8	2.12	2.12	2.12	.750
5284	5284-D	1 3/16	2.12	2.25	2.12	.625
5285	5285-D	1 1/4	2.12	2.25	2.12	.625
5286	5286-D	1 5/16	2.12	2.25	2.12	.625

Sockets can be configured with the following options:
FM = Fixed Magnet SD = Side Magnet TM = Tubular Magnet
SM = Spring Magnet FL = Fast Lead
 Fixed and rotating UHMW plastic sleeves can be special ordered

3/4" Square Drive Universal Wrenches 6 Point



Part # 6 Point	Hex Opening	Overall Length (A)	Socket Diameter (C)	Nose End Diameter (B)	Clearance Depth (D)
UA5306	15/16	3.74	1.73	1.54	.51
UA5308	1 1/16	3.94	1.73	1.69	.67
UA5311	1 1/8	3.94	1.73	1.73	.71
UA5313	1 1/4	4.13	1.73	1.93	.79
UA5314	1 5/16	4.13	1.73	2.01	.83
UA5315	1 7/16	4.32	1.73	2.13	.91
UA5316	1 1/2	4.32	1.73	2.24	.94
UA5317	1 5/8	4.53	1.73	2.36	1.06
UA5318	1 7/8	4.53	1.73	2.68	1.18

Sockets can be configured with the following options:
FM = Fixed Magnet