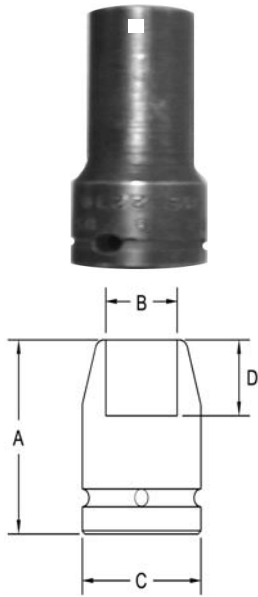


3/4" Square Drive Sockets

6 Point and Double Hex, Thin Wall, Extra Long Length



Part # 6 Point	Part # Double Hex	Hex Opening	Overall Length (A)	Diameter Nose (B)	Diameter Drive End (C)	Opening Depth (D)
5240	5240-D	3/4	4	1.12	1.37	.468
5241	5241-D	13/16	4	1.25	1.37	.531
5242	5242-D	7/8	4	1.37	1.37	.562
5243	5243-D	15/16	4	1.37	1.37	.625
5244	5244-D	1	4	1.43	1.43	.625
5245	5245-D	1 1/16	4	1.50	1.50	.687
5246	5246-D	1 1/8	4	1.62	1.62	.750
5247	5247-D	1 3/16	4	1.68	1.68	.750
5248	5248-D	1 1/4	4	1.75	1.75	.812
5249	5249-D	1 5/16	4	1.87	1.75	.812
5250	5250-D	1 3/8	4	2.00	1.75	.812
5251	5251-D	1 7/16	4	2.00	1.75	.937
5252	5252-D	1 1/2	4	2.12	2.12	1.00
5253	5253-D	1 5/8	4	2.25	2.12	1.12
5254	5254-D	1 1/4	4	2.50	2.12	1.12
5255	5255-D	2	4.12	2.75	2.12	1.37

Sockets can be configured with the following options:
FM = Fixed Magnet SD = Side Magnet TM = Tubular Magnet
SM = Spring Magnet FL = Fast Lead
Fixed and rotating UHMW plastic sleeves can be special ordered