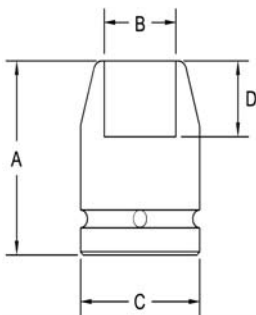


3/4" Square Drive Sockets 6 Point and Double Hex, Extra Long Length



Part # 6 Point	Part # Double Hex	Hex Opening	Overall Length (A)	Diameter Nose (B)	Diameter Drive End (C)	Opening Depth (D)
5195	5195-D	5/8	4	1.06	1.50	.437
5196	5196-D	11/16	4	1.12	1.50	.437
5197	5197-D	3/4	4	1.25	1.50	.468
5198	5198-D	13/16	4	1.37	1.50	.531
5199	5199-D	7/8	4	1.43	1.50	.562
5200	5200-D	15/16	4	1.50	1.50	.625
5201	5201-D	1	4	1.50	1.50	.625
5202	5202-D	1 1/16	4	1.62	1.62	.687
5203	5203-D	1 1/8	4	1.75	1.75	.750
5204	5204-D	1 3/16	4	1.75	1.75	.750
5205	5205-D	1 1/4	4	1.87	1.75	.812
5206	5206-D	1 5/16	4	2.00	1.75	.812
5207	5207-D	1 3/8	4	2.12	2.12	.812
5208	5208-D	1 7/16	4	2.12	2.12	.937
5209	5209-D	1 1/2	4	2.25	2.12	1.00
5210	5210-D	1 9/16	4	2.37	2.12	1.00
5211	5211-D	1 5/8	4	2.50	2.12	1.12
5212	5212-D	1 11/16	4	2.50	2.12	1.12
5213	5213-D	1 3/4	4	2.62	2.12	1.12
5214	5214-D	1 13/16	4	2.75	2.12	1.25
5215	5215-D	1 7/8	4	2.75	2.12	1.25
5216	5216-D	1 15/16	4	2.75	2.12	1.25
5217	5217-D	2	4.12	2.87	2.12	1.37
5218	5218-D	2 1/4	4.25	3.25	2.12	1.50
5219	5219-D	2 3/8	4.25	3.37	2.12	1.62

Sockets can be configured with the following options:
FM = Fixed Magnet SD = Side Magnet TM = Tubular Magnet
SM = Spring Magnet FL = Fast Lead
Fixed and rotating UHMW plastic sleeves can be special ordered