



1/4" Square Drive Sockets Metric Surface Drive Universal Impact



Part # Surface Drive	Hex Opening	Overall Length (A)	Diameter Nose (B)	Diameter Drive End (C)	Opening Depth (D)
SF-1025	5	43	8.8	15	5
SF-1026	5.5	43	9.5	15	6
SF-1027	6	43	10	15	6
SF-1028	7	43	11.5	15	8
SF-1029	8	43	12.5	15	8
SF-1030	9	43	14	15	8
SF-1031	10	43	15	15	8
SF-1032	11	43	16.5	15	8
SF-1033	12	48	16.8	16	8
SF-1034	13	48	18.8	16	8
SF-1035	14	48	19.8	16	8
SF-1036	15	48	20.8	16	8

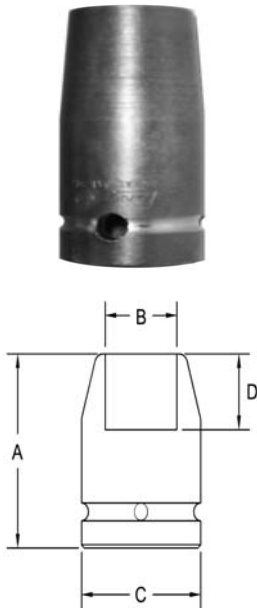
3/8" Square Drive Impact Hex Drivers



Part # Hex	Hex Size	Overall Length (A)	Depth Nose (B)	Diameter Drive End (C)
0270	3/16	1.98	.51	.75
0271	7/32	1.98	.51	.75
0272	1/4	1.98	.51	.75
0273	5/16	1.98	.51	.75
0274	3/8	1.98	.51	.75
0275	7/16	1.98	.51	.75
0276	1/2	1.98	.51	.75

3/8" Square Drive Sockets

6 Point and Double Hex, Short & Standard Length

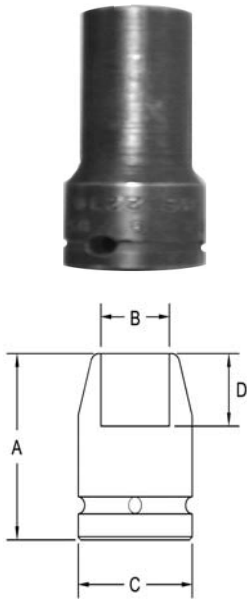


Part # 6 Point	Part # Double Hex	Hex Opening	Overall Length (A)	Diameter Nose (B)	Diameter Drive End (C)	Opening Depth (D)
2000	2000-D	1/4	1.25	.437	.750	.156
2001	2001-D	9/32	1.25	.437	.750	.187
2002	2002-D	5/16	.875	.500	.750	.187
2003	2003-D	5/16	1.25	.500	.750	.187
2004	2004-D	11/32	1.25	.500	.750	.187
2005	2005-D	3/8	.875	.593	.750	.187
2006	2006-D	3/8	1.25	.593	.750	.250
2007	2007-D	13/32	1.50	.687	.750	.250
2008	2008-D	7/16	.875	.687	.750	.281
2009	2009-D	7/16	1.50	.687	.750	.281
2010	2010-D	15/32	1.50	.750	.750	.281
2011	2011-D	1/4	.875	.812	.812	.312
2012	2012-D	1/2	1.50	.812	.812	.343
2013	2013-D	17/32	1.50	.812	.812	.343
2014	2014-D	9/16	.875	.875	.875	.312
2015	2015-D	9/16	1.50	.875	.875	.437
2016	2016-D	19/32	1.50	.875	.875	.437
2017	2017-D	5/8	1.00	.937	.937	.437
2018	2018-D	5/8	1.50	.937	.937	.437
2019	2019-D	21/32	1.50	.937	.937	.437
2020	2020-D	11/16	1.00	1.00	1.00	.437
2021	2021-D	11/16	1.50	1.00	1.00	.437
2022	2022-D	3/4	1.00	1.06	1.06	.437
2023	2023-D	3/4	1.50	1.06	1.06	.468
2024	2024-D	13/16	1.00	1.12	1.12	.437
2025	2025-D	13/16	1.50	1.12	1.12	.437
2026	2026-D	7/8	1.00	1.25	1.25	.437

Sockets can be configured with the following options:
FM = Fixed Magnet SD = Side Magnet TM = Tubular Magnet
SM = Spring Magnet FL = Fast Lead
Fixed and rotating UHMW plastic sleeves can be special ordered

3/8" Square Drive Sockets

6 Point and Double Hex, Thin Wall, Standard Length

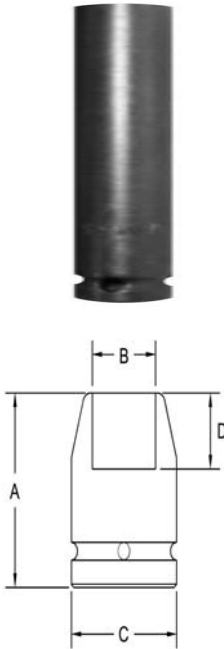


Part # 6 Point	Part # Double Hex	Hex Opening	Overall Length (A)	Diameter Nose (B)	Diameter Drive End (C)	Opening Depth (D)
2040	2040-D	1/4	1.25	.437	.750	.156
2041	2041-D	9/32	1.25	.437	.750	.187
2042	2042-D	5/16	1.25	.500	.750	.187
2043	2043-D	11/32	1.25	.500	.750	.187
2044	2044-D	3/8	1.50	.593	.750	.250
2045	2045-D	7/16	1.50	.625	.750	.281
2046	2046-D	1/2	1.50	.750	.750	.343
2047	2047-D	9/16	1.50	.781	.812	.437
2048	2048-D	5/8	1.50	.875	.875	.437
2049	2049-D	11/16	1.50	.937	.937	.437
2050	2050-D	3/4	1.50	1.00	1.00	.468
2051	2051-D	13/16	1.50	1.12	1.12	.531
2052	2052-D	7/8	1.50	1.18	1.25	.562
2053	2053-D	15/16	1.50	1.31	1.31	.625
2054	2054-D	1	1.50	1.37	1.37	.625
2055	2055-D	1 1/16	1.50	1.50	1.50	.687

Sockets can be configured with the following options:
FM = Fixed Magnet SD = Side Magnet TM = Tubular Magnet
SM = Spring Magnet FL = Fast Lead
Fixed and rotating UHMW plastic sleeves can be special ordered

3/8" Square Drive Sockets

6 Point and Double Hex, Long and Extra Long Length

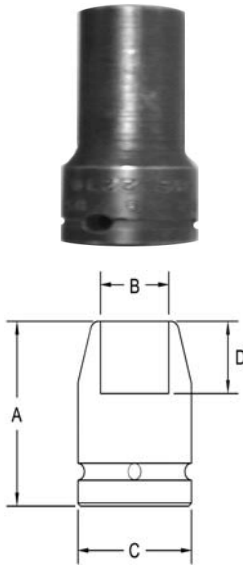


Part # 6 Point	Part # Double Hex	Hex Opening	Overall Length (A)	Diameter Nose (B)	Diameter Drive End (C)	Opening Depth (D)
2069	2069-D	1/4	2.00	.437	.750	.156
2070	2070-D	1/4	3.50	.437	.750	.156
2071	2071-D	9/32	2.00	.437	.750	.187
2072	2072-D	5/16	2.00	.500	.750	.187
2073	2073-D	5/16	3.50	.500	.750	.187
2074	2074-D	11/32	2.00	.500	.750	.187
2075	2075-D	11/32	3.50	.500	.750	.187
2076	2076-D	3/8	2.00	.593	.750	.250
2077	2077-D	3/8	3.50	.593	.750	.250
2078	2078-D	7/16	2.00	.687	.750	.281
2079	2079-D	7/16	3.50	.687	.750	.281
2080	2080-D	1/2	2.00	.812	.812	.343
2081	2081-D	1/2	3.50	.812	.812	.343
2082	2082-D	9/16	2.00	.875	.875	.437
2083	2083-D	9/16	3.50	.875	.875	.437
2084	2084-D	5/8	2.00	.937	.937	.437
2085	2085-D	5/8	3.50	.937	.937	.437
2086	2086-D	11/16	2.00	1.00	1.00	.437
2087	2087-D	11/16	3.50	1.00	1.00	.437
2088	2088-D	1/2	2.00	1.06	1.06	.468
2089	2089-D	3/4	3.50	1.06	1.06	.468
2090	2090-D	13/16	2.00	1.25	1.25	.531
2091	2091-D	13/16	3.50	1.25	1.25	.531
2092	2092-D	7/8	2.00	1.25	1.25	.562
2093	2093-D	7/8	3.50	1.25	1.25	.562

Sockets can be configured with the following options:
FM = Fixed Magnet SD = Side Magnet TM = Tubular Magnet
SM = Spring Magnet FL = Fast Lead
Fixed and rotating UHMW plastic sleeves can be special ordered

3/8" Square Drive Sockets

6 Point and Double Hex, Thin Wall, Long Length

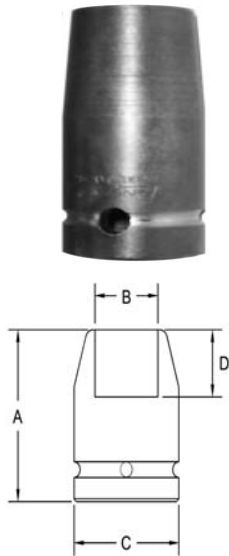


Part # 6 Point	Part # Double Hex	Hex Opening	Overall Length (A)	Diameter Nose (B)	Diameter Drive End (C)	Opening Depth (D)
2107	2170-D	5/16	2.00	.500	.750	.187
2108	2108-D	11/32	2.00	.500	.750	.187
2109	2109-D	3/8	2.00	.593	.750	.250
2110	2110-D	3/8	2.00	.625	.750	.250
2111	2111-D	7/16	2.00	.625	.750	.281
2112	2112-D	1/2	2.00	.750	.750	.343
2113	2113-D	9/16	2.00	.781	.812	.437
2114	2114-D	11/16	2.00	.937	.937	.437
2115	2115-D	3/4	2.00	1.00	1.00	.468
2116	2116-D	15/16	2.00	1.31	1.31	.625
2117	2117-D	1	2.00	1.37	1.37	.625
2118	2118-D	1 1/16	2.00	1.50	1.50	.687

Sockets can be configured with the following options:
FM = Fixed Magnet SD = Side Magnet TM = Tubular Magnet
SM = Spring Magnet FL = Fast Lead
Fixed and rotating UHMW plastic sleeves can be special ordered

3/8" Square Drive Sockets

Surface Drive, Short and Standard Length



Part # Surface Drive	Hex Opening	Overall Length (A)	Diameter Nose (B)	Diameter Drive End (C)	Opening Depth (D)
SF-2132	1/4	1.25	.437	.750	.156
SF-2133	5/16	.875	.500	.750	.187
SF-2134	5/16	1.25	.500	.750	.187
SF-2135	3/8	.875	.593	.750	.187
SF-2136	3/8	1.25	.593	.750	.250
SF-2137	7/16	.875	.687	.750	.281
SF-2138	7/16	1.50	.687	.750	.281
SF-2139	1/2	.875	.812	.812	.312
SF-2140	1/2	1.50	.812	.812	.343
SF-2141	9/16	.875	.875	.875	.312
SF-2142	9/16	1.50	.875	.875	.437
SF-2143	19/32	1.50	.875	.875	.437
SF-2144	5/8	1.00	.937	.937	.437
SF-2145	5/8	1.50	.937	.937	.437
SF-2146	11/16	1.00	.937	.937	.437
SF-2147	11/16	1.50	1.00	1.00	.437
SF-2148	3/4	1.00	1.06	1.06	.437
SF-2149	3/4	1.50	1.06	1.06	.468
SF-2150	7/8	1.00	1.25	1.25	.562

Surface Drive, Thin Wall, Standard Length

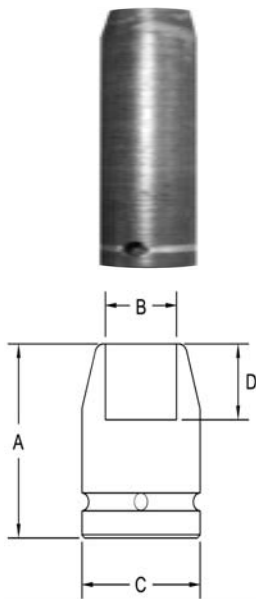


Part # Surface Drive	Hex Opening	Overall Length (A)	Diameter Nose (B)	Diameter Drive End (C)	Opening Depth (D)
SF-2165	5/16	1.25	.500	.750	.187
SF-2166	3/8	1.50	.593	.750	.250
SF-2167	7/16	1.50	.625	.750	.281
SF-2168	1/2	1.50	.750	.750	.343
SF-2169	9/16	1.50	.781	.812	.437
SF-2170	5/8	1.50	.875	.875	.437
SF-2171	11/16	1.50	.937	.937	.437
SF-2172	15/16	1.50	1.31	1.31	.437
SF-2173	1	1.50	1.37	1.37	.625

Sockets can be configured with the following options:
FM = Fixed Magnet SD = Side Magnet TM = Tubular Magnet
SM = Spring Magnet FL = Fast Lead
Fixed and rotating UHMW plastic sleeves can be special ordered

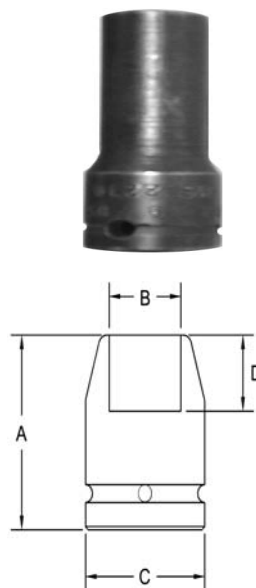
3/8" Square Drive Sockets

Surface Drive, Long and Extra Long Length



Part # Surface Drive	Hex Opening	Overall Length (A)	Diameter Nose (B)	Diameter Drive End (C)	Opening Depth (D)
SF-2188	5/16	2.00	.500	.750	.187
SF-2189	3/8	2.00	.593	.750	.250
SF-2190	3/8	3.50	.593	.750	.250
SF-2191	7/16	2.00	.687	.750	.281
SF-2192	7/16	3.50	.687	.750	.281
SF-2193	1/2	2.00	.812	.812	.343
SF-2194	1/2	3.50	.812	.812	.343
SF-2195	9/16	2.00	.875	.875	.437
SF-2196	9/16	3.50	.875	.875	.437
SF-2197	5/8	2.00	.937	.937	.437
SF-2198	5/8	3.50	.937	.937	.437
SF-2199	11/16	2.00	1.00	1.00	.437
SF-2200	11/16	3.50	1.00	1.00	.437
SF-2201	3/4	2.00	1.06	1.06	.468
SF-2202	3/4	3.50	1.06	1.06	.468
SF-2203	13/16	2.00	1.25	1.25	.531
SF-2204	13/16	3.50	1.25	1.25	.531

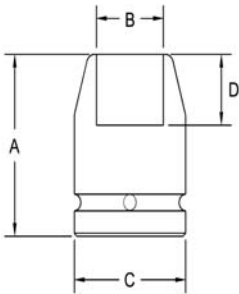
Surface Drive Thin Wall, Long Length



Part # Surface Drive	Hex Opening	Overall Length (A)	Diameter Nose (B)	Diameter Drive End (C)	Opening Depth (D)
SF-2220	3/8	2.00	.593	.750	.250
SF-2221	7/16	2.00	.625	.750	.281
SF-2222	1/2	2.00	.750	.750	.343
SF-2223	9/16	2.00	.781	.812	.437
SF-2224	3/4	2.00	1.00	1.00	.468

Sockets can be configured with the following options:
FM = Fixed Magnet SD = Side Magnet TM = Tubular Magnet
SM = Spring Magnet FL = Fast Lead
Fixed and rotating UHMW plastic sleeves can be special ordered

3/8" Square Drive Sockets For Square Nuts Single Square and Double Square



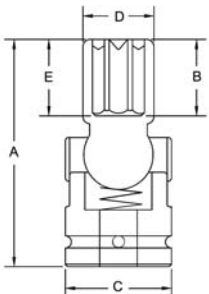
Part # Square	Part # Double Sq	Square Opening	Overall Length (A)	Diameter Nose (B)	Diameter Drive End (C)	Opening Depth (D)
2240	2240-D	7/32	1.50	.437	.750	.187
2241	2241-D	1/4	1.50	.500	.750	.187
2242	2242-D	9/32	1.50	.562	.750	.187
2243	2243-D	5/16	1.50	.625	.750	.250
2244	2244-D	3/8	1.50	.750	.750	.250
2245	2245-D	7/16	1.50	.875	.875	.281
2246	2246-D	1/2	1.50	1.00	1.00	.343
2247	2247-D	9/16	1.50	1.00	1.00	.437
2248	2248-D	5/8	1.50	1.12	1.12	.437
2249	2249-D	11/16	1.50	1.25	1.25	.437
2250	2250-D	3/4	1.50	1.37	1.37	.468

Sockets can be configured with the following options:

FM = Fixed Magnet SD = Side Magnet TM = Tubular Magnet
SM = Spring Magnet FL = Fast Lead

Fixed and rotating UHMW plastic sleeves can be special ordered

3/8" Square Drive Universal Wrenches 6 Point



Part # 6 Point	Hex Opening	Overall Length (A)	Socket Length (B)	Socket Diameter (C)	Nose End Diameter (D)	Clearance Depth (E)
UA224	5/16	2.09	.51	.95	.437	.35
UA225	3/8	2.09	.51	.95	.562	.35
UA227	7/1	2.09	.51	.95	.593	.35
UA229	1/2	2.09	.51	.95	.750	.43
UA232	9/1	2.09	.51	.95	.812	.43
UA235	5/8	2.09	.51	.95	.875	.43
UA237	11/1	2.09	.51	.95	1.00	.43
UA238	3/4	2.09	.51	.95	1.12	.43

Sockets can be configured with the following options:

FM = Fixed Magnet

3/8" Square Drive Universal Wrenches

6 Point and 12 Point Hex, Standard and Tension Type Extensions



Part # 6 Point	Part # 12 Point	Hex Opening	Overall Length (A)	Socket Length (B)	Socket Diameter (C)	Nose End Diameter (D)	Clearance Depth (E)
2270	2270-D	3/8	3.00	.812	.625	.531	.437
2271	2271-D	3/8	4.00	.812	.625	.531	.437
2272	2272-D	3/8	6.00	.812	.625	.531	.437
2273	2273-D	3/8	9.00	.812	.625	.531	.437
2274	2274-D	7/16	3.00	.875	.625	.625	.500
2275	2275-D	7/16	4.00	.875	.625	.625	.500
2276	2276-D	7/16	6.00	.875	.625	.625	.500
2277	2277-D	7/16	9.00	.875	.625	.625	.500
2278	2278-D	7/16	12.0	.875	.625	.625	.500
2279	2279-D	7/16	3.00	.937	.750	.593	.500
2280	2280-D	7/16	4.00	.937	.750	.593	.500
2281	2281-D	7/16	6.00	.937	.750	.593	.500
2282	2282-D	1/2	3.00	.875	.687	.687	.500
2283	2283-D	1/2	4.00	.875	.687	.687	.500
2284	2284-D	1/2	6.00	.875	.687	.687	.500
2285	2285-D	1/2	9.00	.875	.687	.687	.500
2286	2286-D	1/2	12.0	.875	.687	.687	.500
2287	2287-D	1/2	3.00	1.00	.750	.750	.562
2288	2288-D	1/2	4.00	1.00	.750	.750	.562
2289	2289-D	1/2	6.00	1.00	.750	.750	.562
2290	2290-D	1/2	9.00	1.00	.750	.750	.562
2291	2291-D	1/2	12.0	1.00	.750	.750	.562
2292	2292-D	9/16	3.00	1.00	.812	.812	.562
2293	2293-D	9/16	4.00	1.00	.812	.812	.562
2294	2294-D	9/16	6.00	1.00	.812	.812	.562
2295	2295-D	9/16	9.00	1.00	.812	.812	.562
2296	2296-D	9/16	12.0	1.00	.812	.812	.562
2297	2297-D	5/8	3.00	1.12	.875	.875	.593
2298	2298-D	5/8	6.00	1.12	.875	.875	.593
2299	2299-D	5/8	12.0	1.12	.875	.875	.593

Sockets can be configured with the following options:

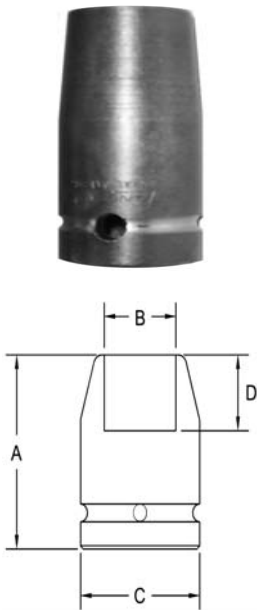
S = Standard (Floppy)

T = Tension

FM = Fixed Magnetic

3/8" Square Drive Sockets METRIC

6 Point and 12 Point, Short and Standard Length



Part # 6 Point	Part # 12 Point	Hex Opening	Overall Length (A)	Diameter Nose (B)	Diameter Drive End (C)	Opening Depth (D)
2310	2310-D	6	31.7	11.1	19.1	3.9
2311	2311-D	7	22.2	11.1	19.1	3.0
2312	2312-D	7	31.7	11.1	19.1	4.8
2313	2313-D	8	22.2	12.7	19.1	4.8
2314	2314-D	8	31.7	12.7	19.1	4.8
2315	2315-D	9	22.2	15.1	19.1	4.8
2316	2316-D	9	31.7	15.1	19.1	4.8
2317	2317-D	10	22.2	16.8	19.1	6.4
2318	2318-D	10	31.7	16.8	19.1	6.4
2319	2319-D	11	22.2	17.5	19.1	7.2
2320	2320-D	11	31.7	17.5	19.1	7.2
2321	2321-D	12	22.2	19.1	19.1	7.2
2322	2322-D	12	38.1	19.1	19.1	7.2
2323	2323-D	13	22.2	20.6	20.6	7.9
2324	2324-D	13	38.1	20.6	20.6	8.7
2325	2325-D	14	22.2	22.2	22.2	7.9
2326	2326-D	14	38.1	22.2	22.2	11.1
2327	2327-D	15	23.8	22.2	22.2	9.5
2328	2328-D	15	38.1	22.2	22.2	11.1
2329	2329-D	16	25.4	23.8	23.8	11.1
2330	2330-D	16	38.1	23.8	23.8	11.1
2331	2331-D	17	25.4	25.4	25.4	11.1
2332	2332-D	17	38.1	25.4	25.4	11.1
2333	2333-D	18	25.4	25.4	25.4	11.1
2334	2334-D	18	38.1	25.4	25.4	11.1
2335	2335-D	19	25.4	28.6	28.6	11.1
2336	2336-D	19	38.1	28.6	28.6	11.9
2337	2337-D	20	25.4	28.6	28.6	11.1
2338	2338-D	20	38.1	28.6	28.6	11.9
2339	2339-D	21	25.4	31.7	31.7	11.1
2340	2340-D	21	38.1	31.7	31.7	13.5
2341	2341-D	22	25.4	31.7	31.7	11.1
2342	2342-D	22	38.1	31.7	31.7	14.3

Sockets can be configured with the following options:

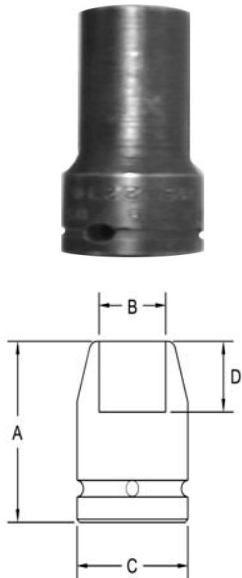
FM = Fixed Magnet SD = Side Magnet TM = Tubular Magnet

SM = Spring Magnet FL = Fast Lead

Fixed and rotating UHMW plastic sleeves can be special ordered

3/8" Square Drive Sockets METRIC

6 Point and Double Hex, Thin Wall Standard Length

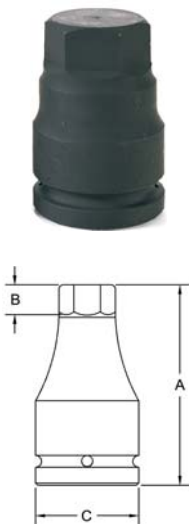


Part # 6 Point	Part # Double Hex	Hex Opening	Overall Length (A)	Diameter Nose (B)	Diameter Drive End (C)	Opening Depth (D)
2357	2357-D	6	31.7	9.5	19.1	3.9
2358	2358-D	7	31.7	11.1	19.1	4.8
2359	2359-D	8	31.7	12.7	19.1	4.8
2360	2360-D	9	31.7	12.7	19.1	4.8
2361	2361-D	10	31.7	15.1	19.1	6.4
2362	2362-D	11	38.1	15.9	19.1	7.2
2363	2363-D	12	38.1	17.5	19.1	7.2
2364	2364-D	13	38.1	19.1	19.1	8.7
2365	2365-D	14	38.1	19.8	20.6	11.1
2366	2366-D	15	38.1	20.6	20.6	11.1
2367	2367-D	16	38.1	22.2	22.2	11.1
2368	2368-D	17	38.1	23.8	23.8	11.1
2369	2369-D	18	38.1	23.8	23.8	11.1
2370	2370-D	19	38.1	25.4	25.4	11.9

Sockets can be configured with the following options:
FM = Fixed Magnet SD = Side Magnet TM = Tubular Magnet
SM = Spring Magnet FL = Fast Lead
Fixed and rotating UHMW plastic sleeves can be special ordered

3/8" Square Drive METRIC

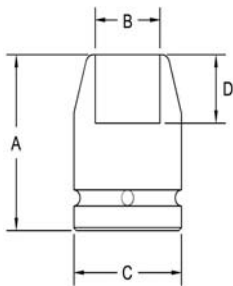
Impact Hex Drivers



Part # Hex	Hex Size	Overall Length (A)	Depth Nose (B)	Diameter Drive End (C)
0280	4	1.98	.51	.75
0281	5	1.98	.51	.75
0282	6	1.98	.51	.75
0283	7	1.98	.51	.75
0284	8	1.98	.51	.75
0285	10	1.98	.51	.75
0286	12	1.98	.51	.75

3/8" Square Drive Sockets METRIC

6 Point and Double Hex, Long and Extra Long Length

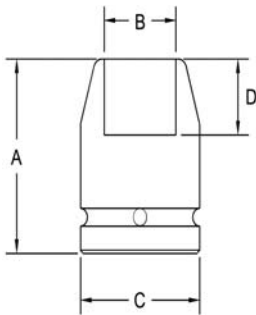


Part # 6 Point	Part # Double Hex	Hex Opening	Overall Length (A)	Diameter Nose (B)	Diameter Drive End (C)	Opening Depth (D)
2390	2390-D	6	50.8	11.1	19.1	3.9
2391	2391-D	7	50.8	11.1	19.1	4.8
2392	2392-D	8	50.8	12.7	19.1	4.8
2393	2393-D	9	50.8	15.1	19.1	4.8
2394	2394-D	10	50.8	16.8	19.1	6.4
2395	2395-D	10	50.8	14.2	15.9	6.4
2396	2396-D	10	88.9	16.8	19.1	6.4
2397	2397-D	11	50.8	17.5	19.1	7.2
2398	2398-D	12	50.8	19.1	19.1	7.2
2399	2399-D	13	50.8	20.6	20.6	8.7
2400	2400-D	13	88.9	20.6	20.6	8.7
2401	2401-D	14	50.8	22.2	22.2	11.1
2402	2402-D	15	50.8	22.2	22.2	11.1
2403	2403-D	15	88.9	22.2	22.2	11.1
2404	2404-D	16	50.8	23.8	23.8	11.1
2405	2405-D	17	50.8	25.4	25.4	11.1
2406	2406-D	18	50.8	25.4	24.4	11.1
2407	2407-D	19	50.8	28.6	28.6	11.9
2408	2408-D	20	50.8	28.6	28.6	11.9
2409	2409-D	21	50.8	31.7	31.7	13.5
2410	2410-D	22	50.8	31.7	31.7	14.3

Sockets can be configured with the following options:
FM = Fixed Magnet SD = Side Magnet TM = Tubular Magnet
SM = Spring Magnet FL = Fast Lead
Fixed and rotating UHMW plastic sleeves can be special ordered

3/8" Square Drive Sockets METRIC

Surface Drive, Short and Standard Length



Part #	Hex Opening	Overall Length (A)	Diameter Nose (B)	Diameter Drive End (C)	Opening Depth (D)
SF-2430	8	31.7	12.7	19.1	4.8
SF-2431	9	31.7	15.1	19.1	4.8
SF-2432	10	22.2	16.8	19.1	6.4
SF-2433	10	31.7	16.8	19.1	6.4
SF-2434	11	22.2	17.5	19.1	7.2
SF-2435	11	38.1	17.5	19.1	7.2
SF-2436	12	22.2	19.1	19.1	7.2
SF-2437	12	38.1	19.1	19.1	7.2
SF-2438	13	22.2	20.6	20.6	8.7
SF-2439	13	38.1	20.6	20.6	8.7
SF-2440	14	22.2	22.2	22.2	11.1
SF-2441	14	38.1	22.2	22.2	11.1
SF-2442	15	23.8	22.2	22.2	11.1
SF-2443	15	38.1	22.2	22.2	11.1
SF-2444	16	38.1	23.8	23.8	11.1
SF-2445	17	25.4	25.4	25.4	11.1
SF-2446	17	38.1	25.4	25.4	11
SF-2447	18	25.4	25.4	25.4	11.1
SF-2448	18	38.1	25.4	25.4	11.1
SF-2449	18	25.4	28.6	28.6	11.9
SF-2450	18	38.1	28.6	28.6	11.9

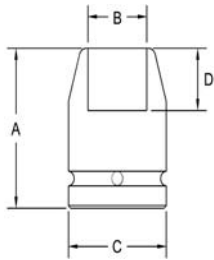
Sockets can be configured with the following options:

FM = Fixed Magnet SD = Side Magnet TM = Tubular Magnet
SM = Spring Magnet FL = Fast Lead

Fixed and rotating UHMW plastic sleeves can be special ordered

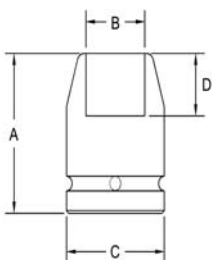
3/8" Square Drive Sockets METRIC

Surface Drive, Thin Wall, Standard Length



Part # Surface Drive	Hex Opening	Overall Length (A)	Diameter Nose (B)	Diameter Drive End (C)	Opening Depth (D)
SF-2470	10	31.7	15.1	19.1	6.4
SF-2471	10	31.7	15.1	15.1	6.4
SF-2472	11	38.1	15.9	19.1	7.2
SF-2473	12	38.1	17.5	19.1	7.2
SF-2474	13	38.1	19.1	19.1	8.7
SF-2475	14	38.1	19.1	19.1	8.7
SF-2476	15	38.1	20.6	20.6	11.1
SF-2477	16	38.1	22.2	22.2	11.1
SF-2478	17	38.1	23.8	23.8	11.1
SF-2479	18	38.1	23.8	23.8	11.1
SF-2480	19	38.1	25.4	25.4	11.9

Surface Drive, Long and Extra Long Length



Part # Surface Drive	Hex Opening	Overall Length (A)	Diameter Nose (B)	Diameter Drive End (C)	Opening Depth (D)
SF-2500	8	50.8	12.7	19.1	4.8
SF-2501	8	50.8	11.9	15.9	4.8
SF-2502	10	50.8	16.8	19.1	6.4
SF-2503	10	88.9	16.8	19.1	6.4
SF-2504	11	50.8	17.5	19.1	7.2
SF-2505	12	50.8	19.1	19.1	7.2
SF-2506	13	50.8	20.6	20.6	8.7
SF-2507	13	88.9	20.6	20.6	8.7
SF-2508	15	50.8	22.2	22.2	11.1
SF-2509	15	88.9	22.2	22.2	11.1
SF-2510	17	50.8	25.4	25.4	11.1
SF-2511	18	50.8	25.4	25.4	11.1
SF-2512	19	50.8	28.6	28.0	11.9

Sockets can be configured with the following options:

FM = Fixed Magnet SD = Side Magnet TM = Tubular Magnet

SM = Spring Magnet FL = Fast Lead

Fixed and rotating UHMW plastic sleeves can be special ordered



3/8" Square Drive METRIC Universal Wrenches 6 Point and 12 point



Part # 6 Point	Hex Opening	Overall Length (A)	Socket Length (B)	Socket Diameter (C)	Nose End Diameter (D)	Clearance Depth (E)
UA2532	10	53	13	24	15	9
UA2533	11	53	13	24	17	9
UA2534	12	53	13	24	19	11
UA2535	13	53	13	24	19	11
UA2536	14	53	13	24	21	11
UA2537	15	53	13	24	22	11
UA2538	17	53	13	24	25	11
UA2539	18	53	13	24	25	11

Sockets can be configured with the following options:
FM = Fixed Magnet

3/8" Square Drive Universal Wrenches METRIC

6 Point and 12 Point Hex, Standard and Tension Type



Part # 6 Point	Part # 12 Point	Hex Opening	Shank Length (A)	Socket Length (B)	Socket Diameter (C)	Nose End Diameter (D)	Clearance Depth (E)
2560	2560-D	10	76	20.6	19.1	15.1	9.5
2561	2561-D	10	102	20.6	19.1	15.1	9.5
2562	2562-D	10	152	20.6	19.1	15.1	9.5
2563	2563-D	10	229	20.6	19.1	15.1	9.5
2564	2564-D	10	305	20.6	19.1	15.1	9.5
2565	2565-D	11	76	23.8	22.2	15.9	10.3
2566	2566-D	11	152	23.8	22.2	15.9	10.3
2567	2567-D	11	229	23.8	22.2	15.9	10.3
2568	2568-D	11	305	23.8	22.2	15.9	10.3
2569	2569-D	12	76	23.8	22.2	17.5	10.3
2570	2570-D	12	102	23.8	22.2	17.5	10.3
2571	2571-D	12	152	23.8	22.2	17.5	10.3
2572	2572-D	12	229	23.8	22.2	17.5	10.3
2573	2573-D	12	305	23.8	22.2	17.5	10.3
2574	2574-D	13	76	25.4	22.2	17.5	11.9
2575	2575-D	13	102	25.4	22.2	17.5	11.9
2576	2576-D	13	152	25.4	22.2	17.5	11.9
2577	2577-D	13	229	25.4	22.2	17.5	11.9
2578	2577-D	13	305	25.4	22.2	17.5	11.9
2579	2579-D	14	76	27.0	22.2	19.1	13.5
2580	2580-D	14	102	27.0	22.2	19.1	13.5
2581	2581-D	14	152	27.0	22.2	19.1	13.5
2582	2582-D	14	229	27.0	22.2	19.1	13.5
2583	2583-D	14	305	27.0	22.2	19.1	13.5
2584	2584-D	15	76	28.6	25.4	19.8	14.3
2585	2585-D	15	102	28.6	25.4	19.8	14.3
2586	2586-D	15	152	28.6	25.4	19.8	14.3
2587	2587-D	15	229	28.6	25.4	19.8	14.3
2588	2588-D	15	305	28.6	25.4	19.8	14.3

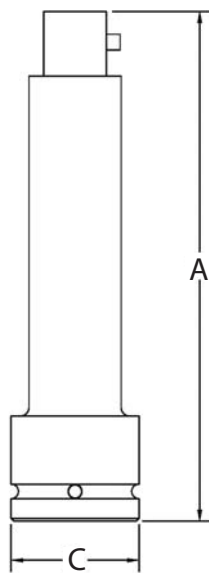
Sockets can be configured with the following options:

S = Standard (Floppy)

T = Tension

FM = Fixed Magnetic

3/8" Square Drive Extensions



Part #	Diameter Drive End (C)	Overall Length (A)
E-2608	.750	1 1/4
E-2609	.750	1 1/2
E-2610	.750	2
E-2611	.750	3
E-2612	.750	4
E-2613	.750	5
E-2613	.750	6
E-2614	.750	7
E-2615	.750	8
E-2616	.750	9
E-2617	.750	10
E-2618	.750	11
E-2619	.750	12
E-2620	.750	13
E-2621	.750	14
E-2622	.750	15
E-2623	.750	16
E-2624	.750	17
E-2625	.750	18
E-2626	.750	19
E-2627	.750	20
E-2628	.750	21
E-2629	.750	22
E-2630	.750	23
E-2631	.750	24

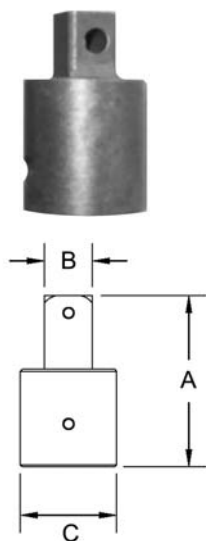
Sockets can be configured with the following options:

P = Pin Lock

B = Ball Lock

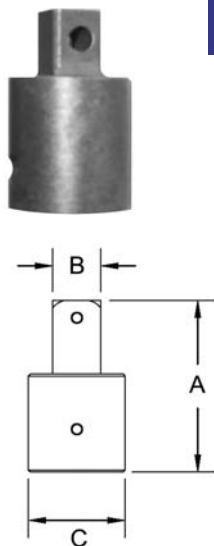
UHMW plastic sleeves can be special ordered

3/8" Square Drive Adapters 1/4" to 3/4" Male Square



Part #	Male Square (B)	Female Square (C)	Overall Length (A)
A-2650	1/4	3/8	1 1/4
A-2651	1/4	3/8	2
A-2652	1/4	3/8	3
A-2653	1/4	3/8	4
A-2654	1/4	3/8	5
A-2655	1/4	3/8	6
A-2656	1/2	3/8	1 1/2
A-2657	1/2	3/8	2
A-2658	1/2	3/8	3
A-2659	1/2	3/8	4
A-2660	1/2	3/8	5
A-2661	1/2	3/8	6
A-2662	5/8	3/8	1 1/2
A-2663	3/4	3/8	1 1/2

3/8" Square Drive Universal Adapters Male Square to Female Square



Part #	Male Square (B)	Female Square (C)	Overall Length (A)	Largest Diameter
2685	1/4	3/8	1 5/16	3/4
2686	3/8	3/8	2 1/8	3/4
2687	3/8	3/8	2 1/2	7/8

Sockets can be configured with the following options:

P = Pin Lock

B = Ball Lock