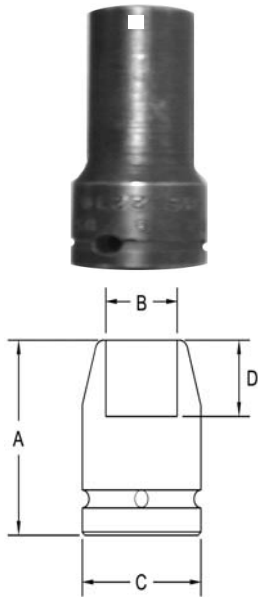


# 1/2" Square Drive Sockets METRIC

## 6 Point and Double Hex, Thin Wall, Standard Length



Part # 6 Point	Part # Double Hex	Hex Opening	Overall Length (A)	Diameter Nose (B)	Diameter Drive End (C)	Opening Depth (D)
3542	3542-D	10	38.1	15.9	23.8	6.4
3543	3543-D	11	38.1	16.7	23.8	7.2
3544	3544-D	12	38.1	17.5	23.8	7.2
3545	3545-D	13	38.1	18.7	23.8	8.7
3546	3546-D	14	38.1	20.6	23.8	11.1
3547	3547-D	15	38.1	22.2	23.8	11.1
3548	3548-D	16	38.1	22.2	23.8	11.1
3549	3549-D	17	38.1	23.8	23.8	11.1
3550	3550-D	18	38.1	25.4	25.4	11.1
3551	3551-D	19	38.1	26.3	26.3	11.9
3552	3552-D	20	38.1	27.0	28.6	11.9
3553	3553-D	21	38.1	28.6	28.6	13.5
3554	3554-D	22	38.1	30.2	31.7	14.3

**Sockets can be configured with the following options:**  
**FM = Fixed Magnet    SD = Side Magnet    TM = Tubular Magnet**  
**SM = Spring Magnet    FL = Fast Lead**  
**Fixed and rotating UHMW plastic sleeves can be special ordered**