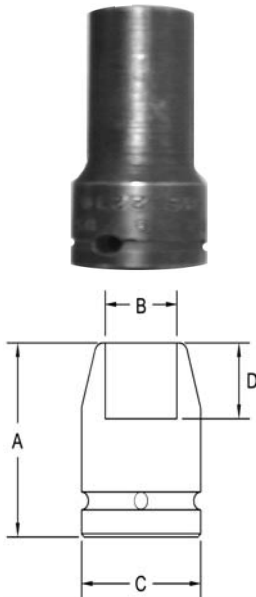


1/2" Square Drive Sockets

Surface Drive, Thin Wall, Extra Long Length



Part #	Hex Opening	Overall Length (A)	Diameter Nose (B)	Diameter Drive End (C)	Opening Depth (D)
SF-3283	7/16	3.25	.656	.937	.281
SF-3284	1/2	3.25	.718	.937	.343
SF-3285	9/16	3.25	.812	.937	.437
SF-3286	5/8	3.25	.875	.937	.437
SF-3287	11/16	3.25	.937	.937	.437
SF-3288	3/4	3.25	1.03	1.12	.468
SF-3289	13/16	3.25	1.12	1.12	.531
SF-3290	7/8	3.50	1.18	1.25	.562
SF-3291	1	3.50	1.37	1.37	.625
SF-3292	1 1/16	3.50	1.43	1.43	.687

Sockets can be configured with the following options:
FM = Fixed Magnet SD = Side Magnet TM = Tubular Magnet
SM = Spring Magnet FL = Fast Lead
Fixed and rotating UHMW plastic sleeves can be special ordered