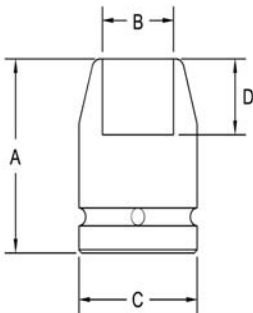


1/2" Square Drive Sockets

Surface Drive, Long and Extra Long Length



Part # Surface Drive	Hex Opening	Overall Length (A)	Diameter Nose (B)	Diameter Drive End (C)	Opening Depth (D)
SF-3242	3/8	2.25	.562	.937	.281
SF-3243	7/16	2.25	.687	.937	.281
SF-3244	1/2	2.25	.812	.937	.343
SF-3245	1/2	3.25	.812	.937	.343
SF-3246	9/16	2.25	.875	.937	.437
SF-3247	9/16	3.25	.875	.937	.437
SF-3248	5/8	2.25	1.00	1.00	.437
SF-3249	5/8	3.25	1.00	1.00	.437
SF-3250	11/16	2.25	1.12	1.12	.437
SF-3251	11/16	3.25	1.12	1.12	.437
SF-3252	3/4	2.25	1.12	1.12	.468
SF-3253	3/4	2.25	1.25	1.25	.468
SF-3254	3/4	3.25	1.12	1.12	.468
SF-3255	13/16	2.25	1.25	1.25	.531
SF-3256	13/16	3.50	1.25	1.25	.531
SF-3257	7/8	2.25	1.31	1.31	.562
SF-3258	7/8	3.50	1.31	1.31	.562
SF-3259	15/16	2.25	1.37	1.37	.625
SF-3260	15/16	3.50	1.37	1.37	.625
SF-3261	1	2.25	1.50	1.50	.625
SF-3262	1	3.50	1.50	1.50	.625
SF-3263	1 1/16	3.50	1.50	1.50	.687

Sockets can be configured with the following options:
FM = Fixed Magnet SD = Side Magnet TM = Tubular Magnet
SM = Spring Magnet FL = Fast Lead
Fixed and rotating UHMW plastic sleeves can be special ordered