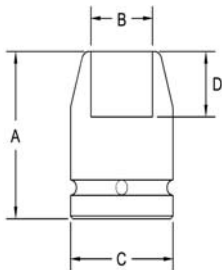
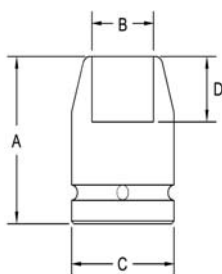


1/2" Square Drive Sockets Surface Drive, Standard Length



Part # Surface Drive	Hex Opening	Overall Length (A)	Diameter Nose (B)	Diameter Drive End (C)	Opening Depth (D)
SF-3182	3/8	1.50	.625	.937	.250
SF-3183	7/16	1.50	.687	.937	.281
SF-3184	1/2	1.50	.812	.937	.343
SF-3185	1/2	1.50	.703	.937	.343
SF-3186	9/16	1.50	.875	.937	.437
SF-3187	5/8	1.50	1.00	1.00	.437
SF-3188	5/8	1.50	.937	1.00	.437
SF-3189	11/16	1.50	1.12	1.12	.437
SF-3190	3/4	1.50	1.12	1.12	.468
SF-3191	13/16	1.50	1.25	1.25	.531
SF-3192	7/8	1.50	1.31	1.31	.562
SF-3193	15/16	1.50	1.37	1.37	.625
SF-3194	1	1.50	1.50	1.50	.625
SF-3195	1 1/16	1.62	1.50	1.50	.687

Surface Drive, Thin Wall and Standard Length



Part # Surface Drive	Hex Opening	Overall Length (A)	Diameter Nose (B)	Diameter Drive End (C)	Opening Depth (D)
SF-3215	3/8	1.50	.593	.937	.250
SF-3216	7/16	1.50	.656	.937	.281
SF-3217	1/2	1.50	.718	.937	.343
SF-3218	9/16	1.50	.812	.937	.437
SF-3219	5/8	1.50	.875	.937	.437
SF-3220	11/16	1.50	.937	.937	.437
SF-3221	3/4	1.50	1.03	1.12	.468
SF-3222	13/16	1.50	1.12	1.12	.531

Sockets can be configured with the following options:
FM = Fixed Magnet SD = Side Magnet TM = Tubular Magnet
SM = Spring Magnet FL = Fast Lead
Fixed and rotating UHMW plastic sleeves can be special ordered