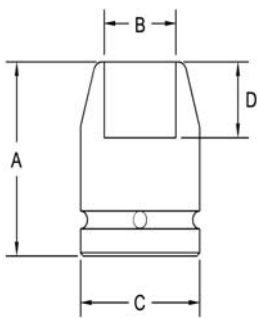


1/2" Square Drive Sockets

6 Point and Double Hex, Long and Extra Long Length

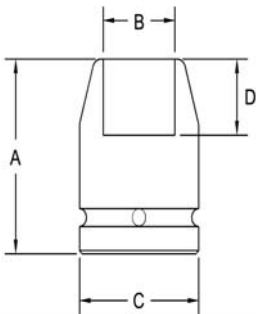


Part # 6 Point	Part # Double Hex	Hex Opening	Overall Length (A)	Diameter Nose (B)	Diameter Drive End (C)	Opening Depth (D)
3090	3090-D	5/16	2.25	.500	.937	.187
3091	3091-D	5/16	3.25	.500	.937	.187
3092	3092-D	3/8	2.25	.625	.937	.250
3093	3093-D	3/8	3.25	.625	.937	.250
3094	3094-D	7/16	2.25	.687	.937	.281
3095	3095-D	7/16	3.25	.687	.937	.281
3096	3096-D	1/2	2.25	.812	.937	.343
3097	3097-D	1/2	3.25	.812	.937	.343
3098	3098-D	9/16	2.25	.875	.937	.343
3099	3099-D	9/16	3.25	.875	.937	.343
3100	3100-D	5/8	2.25	1.00	1.00	.343
3101	3101-D	5/8	3.25	1.00	1.00	.343
3102	3102-D	11/16	2.25	1.12	1.12	.343
3103	3103-D	11/16	3.25	1.12	1.12	.343
3104	3104-D	3/4	2.25	1.12	1.12	.468
3105	3105-D	3/4	3.25	1.12	1.12	.468
3106	3106-D	13/16	2.25	1.25	1.25	.531
3107	3107-D	13/16	3.50	1.25	1.25	.531
3108	3108-D	7/8	2.25	1.31	1.31	.562
3109	3109-D	7/8	3.25	1.31	1.31	.562
3110	3110-D	15/16	2.25	1.37	1.37	.625

Sockets can be configured with the following options:
FM = Fixed Magnet SD = Side Magnet TM = Tubular Magnet
SM = Spring Magnet FL = Fast Lead
Fixed and rotating UHMW plastic sleeves can be special ordered

1/2" Square Drive Sockets

6 Point and Double Hex, Long and Extra Long Length



Part # 6 Point	Part # Double Hex	Hex Opening	Overall Length (A)	Diameter Nose (B)	Diameter Drive End (C)	Opening Depth (D)
3111	3111-D	15/16	3.50	1.37	1.37	.625
3112	3112-D	1	2.25	1.50	1.50	.625
3113	3113-D	1	3.50	1.50	1.50	.625
3114	3114-D	1 1/16	2.37	1.50	1.50	.687
3115	3115-D	1 1/16	3.50	1.50	1.50	.687
3116	3116-D	1 1/8	2.37	1.62	1.62	.750
3117	3117-D	1 1/8	3.50	1.62	1.62	.750
3118	3118-D	1 3/16	2.37	1.75	1.75	.750
3119	3119-D	1 3/16	3.50	1.75	1.75	.750
3120	3120-D	1 1/4	2.50	1.75	1.75	.812
3121	3121-D	1 1/4	3.50	1.75	1.75	.812
3122	3122-D	1 5/16	2.50	1.87	1.87	.812
3123	3123-D	1 5/16	3.50	1.87	1.87	.812
3124	3124-D	1 3/8	2.50	2.00	2.00	.812
3125	3125-D	1 3/8	3.62	2.00	2.00	.812
3126	3126-D	1 7/16	2.50	2.00	2.00	.937
3127	3127-D	1 7/16	3.62	2.00	2.00	.937
3128	3128-D	1 1/2	2.50	2.12	2.12	1.00
3129	3129-D	1 1/2	3.75	2.12	2.12	1.00

Sockets can be configured with the following options:
FM = Fixed Magnet SD = Side Magnet TM = Tubular Magnet
SM = Spring Magnet FL = Fast Lead
Fixed and rotating UHMW plastic sleeves can be special ordered