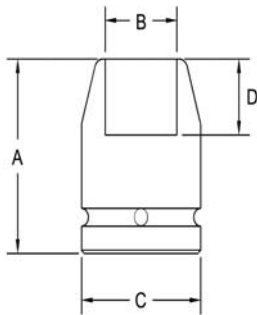


1" Square Drive Sockets

Single Square and Double Square, Standard Length



Part # Square	Part # Double Sq	Square Opening	Overall Length (A)	Diameter Nose (B)	Diameter Drive End (C)	Opening Depth (D)
6230	6230-D	5/8	2.12	1.37	2.00	.812
6231	6231-D	11/16	2.12	1.50	2.00	.812
6232	6232-D	3/4	2.12	1.62	2.00	.812
6233	6233-D	13/16	2.12	1.75	2.00	.812
6234	6234-D	7/8	2.12	2.00	2.00	.812
6235	6235-D	15/16	2.12	2.12	2.12	.812
6236	6236-D	1	2.12	2.12	2.12	.812
6237	6237-D	1 1/16	2.12	2.12	2.12	.812
6238	6238-D	1 1/8	2.25	2.25	2.12	.937
6239	6239-D	1 3/16	2.25	2.25	2.12	.937
6240	6240-D	1 1/4	2.25	2.37	2.12	.937
6241	6241-D	1 5/16	2.25	2.50	2.12	.937
6242	6242-D	1 3/8	2.31	2.62	2.62	1.00
6243	6243-D	1 7/16	2.31	2.62	2.62	1.00
6244	6244-D	1 1/2	2.37	2.75	2.62	1.06
6245	6245-D	1 9/16	2.37	2.75	2.62	1.06
6246	6246-D	1 5/8	2.50	2.87	2.62	1.06
6247	6247-D	1 11/16	2.50	3.25	3.25	1.12
6248	6248-D	1 3/4	2.50	3.50	3.25	1.12
6249	6249-D	1 13/16	2.62	3.50	3.25	1.25
6250	6250-D	1 7/8	2.62	3.50	3.25	1.25
6251	6251-D	1 15/16	2.62	3.75	3.25	1.25
6252	6252-D	2	2.75	3.75	3.25	1.31

Sockets can be configured with the following options:
FM = Fixed Magnet SD = Side Magnet TM = Tubular Magnet
SM = Spring Magnet FL = Fast Lead
Fixed and rotating UHMW plastic sleeves can be special ordered