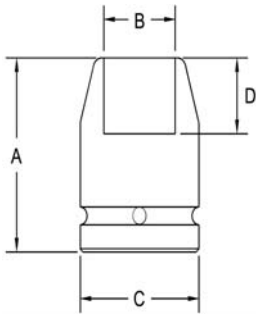


1" Square Drive Sockets

6 Point and Double Hex, Thin Wall, Extra Long Length



Part # 6 Point	Part # Double Hex	Hex Opening	Overall Length (A)	Diameter Nose (B)	Diameter Drive End (C)	Opening Depth (D)
6200	6200-D	7/8	4.25	1.43	2.12	.562
6201	6201-D	15/16	4.25	1.50	2.12	.625
6202	6202-D	1 1/16	4.25	1.56	2.12	.750
6203	6203-D	1 1/8	4.25	1.62	2.12	.750
6204	6204-D	1 1/4	4.25	1.81	2.12	.812
6205	6205-D	1 5/16	4.25	1.87	2.12	.812
6206	6206-D	1 1/2	4.25	2.12	2.12	1.00

Sockets can be configured with the following options:

FM = Fixed Magnet SD = Side Magnet TM = Tubular Magnet

SM = Spring Magnet FL = Fast Lead

Fixed and rotating UHMW plastic sleeves can be special ordered