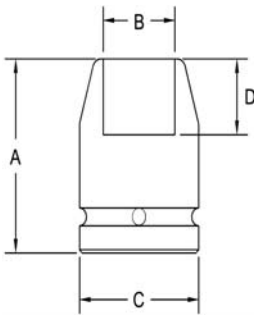


# 1" Square Drive Sockets

## 6 point and Double Hex, Thin Wall Standard Length



Part # 6 Point	Part # Double Hex	Hex Opening	Overall Length (A)	Diameter Nose (B)	Diameter Drive End (C)	Opening Depth (D)
6060	6060-D	15/16	2.12	1.43	1.87	.812
6061	6061-D	1	2.12	1.50	1.87	.812
6062	6062-D	1 1/16	2.12	1.56	1.87	.812
6063	6063-D	1 1/8	2.12	1.62	1.87	.812
6064	6064-D	1 3/16	2.12	1.75	2.00	.812
6065	6065-D	1 1/4	2.12	1.81	2.00	.812
6066	6066-D	1 5/16	2.12	1.87	2.00	.812
6067	6067-D	1 3/8	2.12	1.93	2.00	.812
6068	6068-D	1 7/16	2.25	2.00	2.00	.937
6069	6069-D	1 1/2	2.25	2.12	2.12	.937
6070	6070-D	1 5/8	2.37	2.31	2.12	.937
6071	6071-D	1 11/16	2.37	2.37	2.12	.937
6072	6072-D	1 3/4	2.37	2.43	2.12	1.06
6073	6073-D	1 13/16	2.50	2.56	2.12	1.06
6074	6074-D	1 7/8	2.50	2.62	2.62	1.06
6075	6075-D	2	2.62	2.75	2.62	1.18
6076	6076-D	2 1/8	2.62	2.93	2.62	1.18
6077	6077-D	2 1/4	2.75	3.12	2.62	1.31
6078	6078-D	2 1/2	2.50	3.37	3.25	1.43

**Sockets can be configured with the following options:**

**FM = Fixed Magnet    SD = Side Magnet    TM = Tubular Magnet**

**SM = Spring Magnet    FL = Fast Lead**

**Fixed and rotating UHMW plastic sleeves can be special ordered**