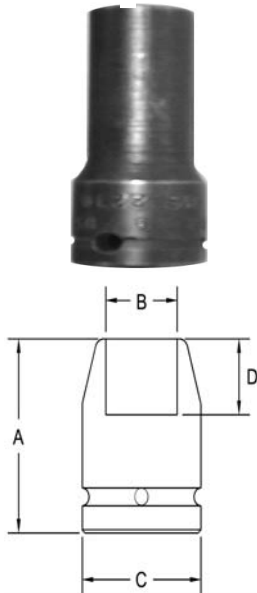


1/2" Square Drive Sockets

6 Point and Double Hex, Thin Wall, Extra Long Length



Part # 6 Point	Part # Double Hex	Hex Opening	Overall Length (A)	Diameter Nose (B)	Diameter Drive End (C)	Opening Depth (D)
3150	3150-D	5/16	3.25	.500	.937	.187
3151	3151-D	3/8	3.25	.593	.937	.250
3152	3152-D	7/16	3.25	.656	.937	.281
3153	3153-D	1/2	3.25	.718	.937	.343
3154	3154-D	9/16	3.25	.812	.937	.437
3155	3155-D	5/8	3.25	.875	.937	.437
3156	3156-D	11/16	3.25	.937	.937	.437
3157	3157-D	3/4	3.25	1.03	1.12	.468
3158	3158-D	13/16	3.50	1.12	1.12	.531
3159	3159-D	7/8	3.50	1.18	1.25	.562
3160	3160-D	15/16	3.50	1.25	1.25	.625
3161	3161-D	1	3.50	1.37	1.37	.625
3162	3162-D	1 1/16	3.50	1.43	1.43	.687

Sockets can be configured with the following options:

FM = Fixed Magnet SD = Side Magnet TM = Tubular Magnet
SM = Spring Magnet FL = Fast Lead

Fixed and rotating UHMW plastic sleeves can be special ordered