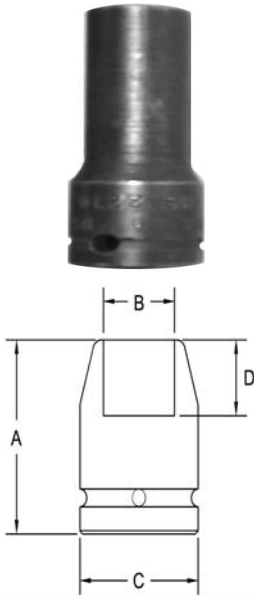


3/4" Square Drive Sockets

6 Point and Double Hex, Thin Wall, Standard Length



Part # 6 Point	Part # Double Hex	Hex Opening	Overall Length (A)	Diameter Nose (B)	Diameter Drive End (C)	Opening Depth (D)
5152	5152-D	3/4	2.00	1.12	1.37	.468
5153	5153-D	13/16	2.00	1.25	1.37	.531
5154	5154-D	7/8	2.00	1.31	1.37	.562
5155	5155-D	15/16	2.00	1.37	1.37	.625
5156	5156-D	1	2.00	1.43	1.43	.625
5157	5157-D	1 1/16	2.00	1.50	1.50	.687
5158	5158-D	1 1/8	2.12	1.62	1.62	.750
5159	5159-D	1 3/16	2.12	1.62	1.62	.750
5160	5160-D	1 1/4	2.12	1.75	1.75	.812
5161	5161-D	1 5/16	2.12	1.87	1.75	.812
5162	5162-D	1 3/8	2.12	2.00	1.75	.812
5163	5163-D	1 7/8	2.25	2.00	1.75	.937
5164	5164-D	1 1/2	2.25	2.12	2.12	1.00
5165	5165-D	1 9/16	2.25	2.18	2.12	1.12
5166	5166-D	1 5/8	2.25	2.25	2.12	1.12
5167	5167-D	1 11/16	2.25	2.37	2.12	1.12
5168	5168-D	1 3/4	2.25	2.43	2.12	1.12
5169	5169-D	1 13/16	2.25	2.50	2.12	1.25
5170	5170-D	1 7/8	2.25	2.62	2.12	1.25
5171	5171-D	2	2.37	2.75	2.18	1.37
5172	5172-D	2 1/16	2.37	2.81	2.62	1.37
5173	5173-D	2 3/16	2.37	3.00	2.62	1.37
5174	5174-D	2 1/4	2.37	3.00	2.62	1.37

Sockets can be configured with the following options:
FM = Fixed Magnet SD = Side Magnet TM = Tubular Magnet
SM = Spring Magnet FL = Fast Lead
Fixed and rotating UHMW plastic sleeves can be special ordered