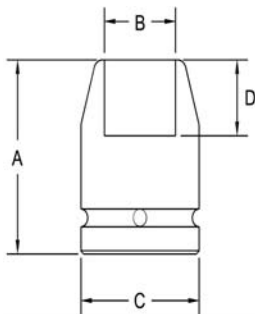


1/2" Square Drive Sockets METRIC

6 Point and Double Hex, Standard Length



Part # 6 Point	Part # Double Hex	Hex Opening	Overall Length (A)	Diameter Nose (B)	Diameter Drive End (C)	Opening Depth (D)
3497	3497-D	10	38.1	16.7	23.8	6.4
3498	3498-D	11	38.1	17.5	23.8	7.2
3499	3499-D	12	38.1	19.1	23.8	7.2
3500	3500-D	13	38.1	22.2	23.8	8.7
3501	3501-D	14	38.1	22.2	23.8	11.1
3502	3502-D	15	38.1	23.8	23.8	11.1
3503	3503-D	16	38.1	25.4	25.4	11.1
3504	3504-D	17	38.1	28.6	28.6	11.1
3505	3505-D	18	38.1	28.6	28.6	11.1
3506	3506-D	19	38.1	28.6	28.6	11.9
3507	3507-D	20	38.1	31.7	31.7	11.9
3508	3508-D	21	38.1	31.7	31.7	13.5
3509	3509-D	22	38.1	33.3	33.3	14.3
3510	3510-D	23	38.1	34.9	34.9	15.9
3511	3511-D	24	38.1	34.9	34.9	15.9
3512	3512-D	25	38.1	38.1	38.1	15.9
3513	3513-D	26	38.1	38.1	38.1	15.9
3514	3514-D	27	41.3	41.3	41.3	17.5
3515	3515-D	28	41.3	41.3	41.3	19.1
3516	3516-D	29	41.3	44.4	44.4	19.1
3517	3517-D	30	41.3	44.4	44.4	19.1
3518	3518-D	32	44.4	44.4	44.4	20.6
3519	3519-D	33	44.4	47.6	47.6	20.6
3520	3520-D	34	47.6	47.5	47.5	20.5
3521	3521-D	35	47.6	50.8	50.8	20.6
3522	3522-D	36	47.6	50.8	50.8	23.8

Sockets can be configured with the following options:

FM = Fixed Magnet SD = Side Magnet TM = Tubular Magnet

SM = Spring Magnet FL = Fast Lead

Fixed and rotating UHMW plastic sleeves can be special ordered