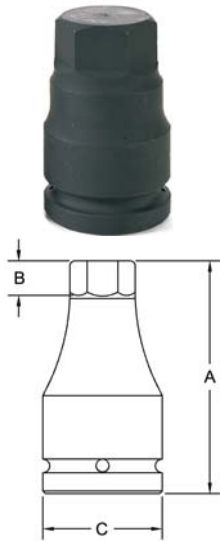


1/2" Square Drive Impact Hex Drivers



Part # Hex	Hex Size	Overall Length (A)	Depth Nose (B)	Diameter Drive End (C)
0230	1/4	2.95	2.00	.98
0231	9/32	2.95	2.00	.98
0232	5/16	2.95	2.00	.98
0233	3/8	2.95	2.00	.98
0234	7/16	2.95	2.00	.98
0235	1/2	2.95	2.00	.98
0236	9/16	2.95	2.00	.98
0237	5/8	2.95	2.00	.98
0238	11/16	2.95	2.00	.98
0239	3/4	2.95	2.00	.98

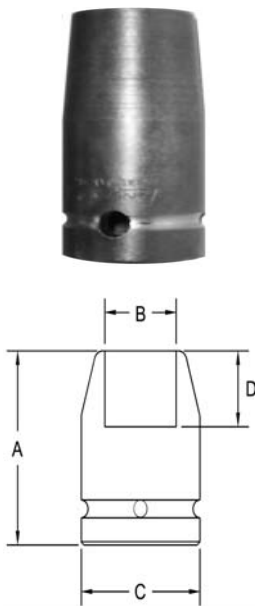
1/2" Square Drive Sockets Universal Hex Drivers



Part # Hex	Hex Size	Overall Length (A)	Depth Nose (B)	Diameter Drive End (C)
0200	1/4	2.95	.59	1.10
0201	5/16	2.95	.59	1.10
0202	3/8	2.95	.79	1.10
0203	7/16	2.95	.79	1.10
0204	1/2	2.95	.79	1.10
0205	9/16	2.95	.79	1.10
0206	5/8	2.95	.79	1.10
0207	3/4	2.95	.79	1.10

1/2" Square Drive Sockets

6 Point and Double Hex, Standard Length

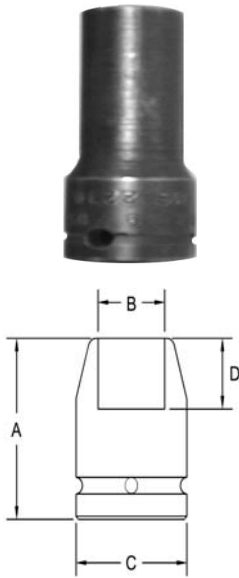


Part # 6 Point	Part # 12 Point	Hex Opening	Overall Length (A)	Diameter Nose (B)	Diameter Drive End (C)	Opening Depth (D)
3000	3000-D	1/4	1.50	.437	.937	.156
3001	3001-D	9/32	1.50	.437	.937	.187
3002	3002-D	5/16	1.50	.500	.937	.187
3003	3003-D	11/32	1.50	.562	.937	.187
3004	3004-D	3/8	1.50	.625	.937	.250
3005	3005-D	13/32	1.50	.687	.937	.250
3006	3006-D	7/16	1.50	.687	.937	.281
3007	3007-D	15/32	1.50	.750	.937	.281
3008	3008-D	1/2	1.50	.812	.937	.343
3009	3009-D	1/2	1.50	.703	.937	.343
3010	3010-D	17/32	1.50	.875	.937	.343
3011	3011-D	9/16	1.50	.875	.937	.437
3012	3012-D	19/32	1.50	.937	.937	.437
3013	3013-D	5/8	1.50	1.00	1.00	.437
3014	3014-D	21/32	1.50	1.00	1.00	.437
3015	3015-D	11/16	1.50	1.12	1.12	.437
3016	3016-D	3/4	1.50	1.12	1.12	.468
3017	3017-D	25/32	1.50	1.25	1.25	.468
3018	3018-D	13/16	1.50	1.25	1.25	.531
3019	3019-D	7/8	1.50	1.31	1.31	.562
3020	3020-D	29/32	1.50	1.37	1.37	.625
3021	3021-D	15/16	1.50	1.37	1.37	.625
3022	3022-D	31/32	1.50	1.50	1.50	.625
3023	3023-D	1	1.50	1.50	1.50	.625
3024	3024-D	1 1/16	1.62	1.50	1.50	.687
3025	3025-D	1 1/8	1.62	1.62	1.62	.750
3026	3026-D	1 3/16	1.62	1.75	1.75	.750
3027	3027-D	1 1/4	1.75	1.75	1.75	.812
3028	3028-D	1 5/16	1.75	1.87	1.87	.812
3029	3029-D	1 3/8	2.00	2.00	2.00	.812
3030	3030-D	1 7/16	2.00	2.00	2.00	.937
3031	3031-D	1 1/2	2.00	2.12	2.12	1.00
3032	3032-D	1 9/16	2.00	2.25	2.25	1.00
3033	3033-D	1 5/8	2.00	2.37	2.37	1.12
3034	3034-D	1 11/16	2.00	2.37	2.37	1.12
3035	3035-D	1 3/4	2.00	2.50	2.50	1.12

Sockets can be configured with the following options:
FM = Fixed Magnet SD = Side Magnet TM = Tubular Magnet
SM = Spring Magnet FL = Fast Lead
Fixed and rotating UHMW plastic sleeves can be special ordered

1/2" Square Drive Sockets

6 Point and Double Hex, Thin Wall, Standard Length

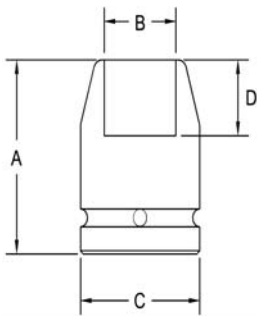


Part # 6 Point	Part # Double Hex	Hex Opening	Overall Length (A)	Diameter Nose (B)	Diameter Drive End (C)	Opening Depth (D)
3055	3055-D	5/16	1.50	.593	.937	.250
3056	3056-D	3/8	1.50	.593	.937	.250
3057	3057-D	7/16	1.50	.656	.937	.281
3058	3058-D	1/2	1.50	.718	.937	.343
3059	3059-D	9/16	1.50	.812	.937	.437
3060	3060-D	5/8	1.50	.875	.937	.437
3061	3061-D	21/32	1.50	.906	.937	.437
3062	3062-D	11/16	1.50	.937	.937	.437
3063	3063-D	3/4	1.50	1.03	1.03	.468
3064	3064-D	3/4	1.50	1.03	1.12	.468
3065	3065-D	25/32	1.50	1.06	1.12	.468
3066	3066-D	13/16	1.50	1.12	1.12	.531
3067	3067-D	7/8	1.50	1.18	1.25	.562
3068	3068-D	15/16	1.50	1.25	1.25	.625
3069	3069-D	1	1.50	1.37	1.37	.625
3070	3070-D	1 1/16	1.62	1.43	1.43	.687
3071	3071-D	1 1/8	1.62	1.50	1.50	.750
3072	3072-D	1 3/16	1.62	1.62	1.62	.750
3073	3073-D	1 1/4	1.75	1.68	1.75	.812
3074	3074-D	1 5/16	1.75	1.78	1.87	.812

Sockets can be configured with the following options:
FM = Fixed Magnet SD = Side Magnet TM = Tubular Magnet
SM = Spring Magnet FL = Fast Lead
Fixed and rotating UHMW plastic sleeves can be special ordered

1/2" Square Drive Sockets

6 Point and Double Hex, Long and Extra Long Length



Part # 6 Point	Part # Double Hex	Hex Opening	Overall Length (A)	Diameter Nose (B)	Diameter Drive End (C)	Opening Depth (D)
3090	3090-D	5/16	2.25	.500	.937	.187
3091	3091-D	5/16	3.25	.500	.937	.187
3092	3092-D	3/8	2.25	.625	.937	.250
3093	3093-D	3/8	3.25	.625	.937	.250
3094	3094-D	7/16	2.25	.687	.937	.281
3095	3095-D	7/16	3.25	.687	.937	.281
3096	3096-D	1/2	2.25	.812	.937	.343
3097	3097-D	1/2	3.25	.812	.937	.343
3098	3098-D	9/16	2.25	.875	.937	.343
3099	3099-D	9/16	3.25	.875	.937	.343
3100	3100-D	5/8	2.25	1.00	1.00	.343
3101	3101-D	5/8	3.25	1.00	1.00	.343
3102	3102-D	11/16	2.25	1.12	1.12	.343
3103	3103-D	11/16	3.25	1.12	1.12	.343
3104	3104-D	3/4	2.25	1.12	1.12	.468
3105	3105-D	3/4	3.25	1.12	1.12	.468
3106	3106-D	13/16	2.25	1.25	1.25	.531
3107	3107-D	13/16	3.50	1.25	1.25	.531
3108	3108-D	7/8	2.25	1.31	1.31	.562
3109	3109-D	7/8	3.25	1.31	1.31	.562
3110	3110-D	15/16	2.25	1.37	1.37	.625

Sockets can be configured with the following options:

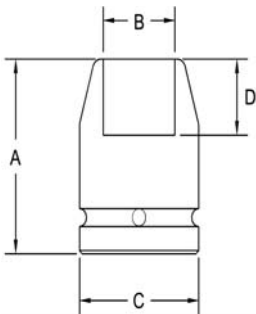
FM = Fixed Magnet SD = Side Magnet TM = Tubular Magnet

SM = Spring Magnet FL = Fast Lead

Fixed and rotating UHMW plastic sleeves can be special ordered

1/2" Square Drive Sockets

6 Point and Double Hex, Long and Extra Long Length

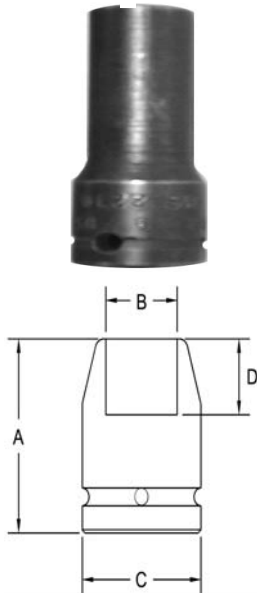


Part # 6 Point	Part # Double Hex	Hex Opening	Overall Length (A)	Diameter Nose (B)	Diameter Drive End (C)	Opening Depth (D)
3111	3111-D	15/16	3.50	1.37	1.37	.625
3112	3112-D	1	2.25	1.50	1.50	.625
3113	3113-D	1	3.50	1.50	1.50	.625
3114	3114-D	1 1/16	2.37	1.50	1.50	.687
3115	3115-D	1 1/16	3.50	1.50	1.50	.687
3116	3116-D	1 1/8	2.37	1.62	1.62	.750
3117	3117-D	1 1/8	3.50	1.62	1.62	.750
3118	3118-D	1 3/16	2.37	1.75	1.75	.750
3119	3119-D	1 3/16	3.50	1.75	1.75	.750
3120	3120-D	1 1/4	2.50	1.75	1.75	.812
3121	3121-D	1 1/4	3.50	1.75	1.75	.812
3122	3122-D	1 5/16	2.50	1.87	1.87	.812
3123	3123-D	1 5/16	3.50	1.87	1.87	.812
3124	3124-D	1 3/8	2.50	2.00	2.00	.812
3125	3125-D	1 3/8	3.62	2.00	2.00	.812
3126	3126-D	1 7/16	2.50	2.00	2.00	.937
3127	3127-D	1 7/16	3.62	2.00	2.00	.937
3128	3128-D	1 1/2	2.50	2.12	2.12	1.00
3129	3129-D	1 1/2	3.75	2.12	2.12	1.00

Sockets can be configured with the following options:
FM = Fixed Magnet SD = Side Magnet TM = Tubular Magnet
SM = Spring Magnet FL = Fast Lead
Fixed and rotating UHMW plastic sleeves can be special ordered

1/2" Square Drive Sockets

6 Point and Double Hex, Thin Wall, Extra Long Length



Part # 6 Point	Part # Double Hex	Hex Opening	Overall Length (A)	Diameter Nose (B)	Diameter Drive End (C)	Opening Depth (D)
3150	3150-D	5/16	3.25	.500	.937	.187
3151	3151-D	3/8	3.25	.593	.937	.250
3152	3152-D	7/16	3.25	.656	.937	.281
3153	3153-D	1/2	3.25	.718	.937	.343
3154	3154-D	9/16	3.25	.812	.937	.437
3155	3155-D	5/8	3.25	.875	.937	.437
3156	3156-D	11/16	3.25	.937	.937	.437
3157	3157-D	3/4	3.25	1.03	1.12	.468
3158	3158-D	13/16	3.50	1.12	1.12	.531
3159	3159-D	7/8	3.50	1.18	1.25	.562
3160	3160-D	15/16	3.50	1.25	1.25	.625
3161	3161-D	1	3.50	1.37	1.37	.625
3162	3162-D	1 1/16	3.50	1.43	1.43	.687

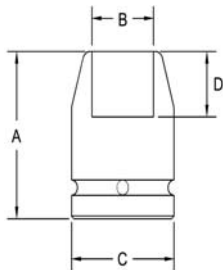
Sockets can be configured with the following options:

FM = Fixed Magnet SD = Side Magnet TM = Tubular Magnet
SM = Spring Magnet FL = Fast Lead

Fixed and rotating UHMW plastic sleeves can be special ordered

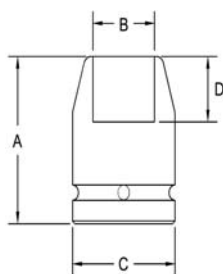
1/2" Square Drive Sockets

Surface Drive, Standard Length



Part # Surface Drive	Hex Opening	Overall Length (A)	Diameter Nose (B)	Diameter Drive End (C)	Opening Depth (D)
SF-3182	3/8	1.50	.625	.937	.250
SF-3183	7/16	1.50	.687	.937	.281
SF-3184	1/2	1.50	.812	.937	.343
SF-3185	1/2	1.50	.703	.937	.343
SF-3186	9/16	1.50	.875	.937	.437
SF-3187	5/8	1.50	1.00	1.00	.437
SF-3188	5/8	1.50	.937	1.00	.437
SF-3189	11/16	1.50	1.12	1.12	.437
SF-3190	3/4	1.50	1.12	1.12	.468
SF-3191	13/16	1.50	1.25	1.25	.531
SF-3192	7/8	1.50	1.31	1.31	.562
SF-3193	15/16	1.50	1.37	1.37	.625
SF-3194	1	1.50	1.50	1.50	.625
SF-3195	1 1/16	1.62	1.50	1.50	.687

Surface Drive, Thin Wall and Standard Length

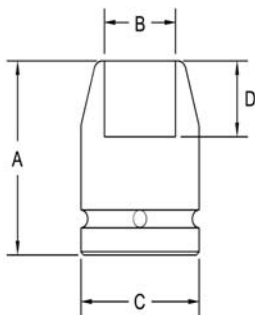


Part # Surface Drive	Hex Opening	Overall Length (A)	Diameter Nose (B)	Diameter Drive End (C)	Opening Depth (D)
SF-3215	3/8	1.50	.593	.937	.250
SF-3216	7/16	1.50	.656	.937	.281
SF-3217	1/2	1.50	.718	.937	.343
SF-3218	9/16	1.50	.812	.937	.437
SF-3219	5/8	1.50	.875	.937	.437
SF-3220	11/16	1.50	.937	.937	.437
SF-3221	3/4	1.50	1.03	1.12	.468
SF-3222	13/16	1.50	1.12	1.12	.531

Sockets can be configured with the following options:
FM = Fixed Magnet SD = Side Magnet TM = Tubular Magnet
SM = Spring Magnet FL = Fast Lead
Fixed and rotating UHMW plastic sleeves can be special ordered

1/2" Square Drive Sockets

Surface Drive, Long and Extra Long Length

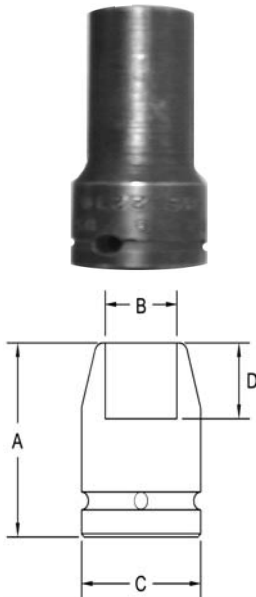


Part # Surface Drive	Hex Opening	Overall Length (A)	Diameter Nose (B)	Diameter Drive End (C)	Opening Depth (D)
SF-3242	3/8	2.25	.562	.937	.281
SF-3243	7/16	2.25	.687	.937	.281
SF-3244	1/2	2.25	.812	.937	.343
SF-3245	1/2	3.25	.812	.937	.343
SF-3246	9/16	2.25	.875	.937	.437
SF-3247	9/16	3.25	.875	.937	.437
SF-3248	5/8	2.25	1.00	1.00	.437
SF-3249	5/8	3.25	1.00	1.00	.437
SF-3250	11/16	2.25	1.12	1.12	.437
SF-3251	11/16	3.25	1.12	1.12	.437
SF-3252	3/4	2.25	1.12	1.12	.468
SF-3253	3/4	2.25	1.25	1.25	.468
SF-3254	3/4	3.25	1.12	1.12	.468
SF-3255	13/16	2.25	1.25	1.25	.531
SF-3256	13/16	3.50	1.25	1.25	.531
SF-3257	7/8	2.25	1.31	1.31	.562
SF-3258	7/8	3.50	1.31	1.31	.562
SF-3259	15/16	2.25	1.37	1.37	.625
SF-3260	15/16	3.50	1.37	1.37	.625
SF-3261	1	2.25	1.50	1.50	.625
SF-3262	1	3.50	1.50	1.50	.625
SF-3263	1 1/16	3.50	1.50	1.50	.687

Sockets can be configured with the following options:
FM = Fixed Magnet SD = Side Magnet TM = Tubular Magnet
SM = Spring Magnet FL = Fast Lead
Fixed and rotating UHMW plastic sleeves can be special ordered

1/2" Square Drive Sockets

Surface Drive, Thin Wall, Extra Long Length

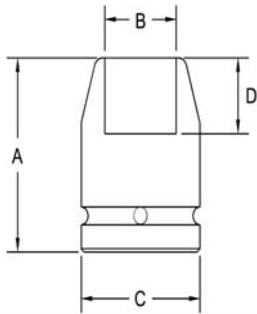


Part #	Hex Surface Drive	Hex Opening	Overall Length (A)	Diameter Nose (B)	Diameter Drive End (C)	Opening Depth (D)
SF-3283		7/16	3.25	.656	.937	.281
SF-3284		1/2	3.25	.718	.937	.343
SF-3285		9/16	3.25	.812	.937	.437
SF-3286		5/8	3.25	.875	.937	.437
SF-3287		11/16	3.25	.937	.937	.437
SF-3288		3/4	3.25	1.03	1.12	.468
SF-3289		13/16	3.25	1.12	1.12	.531
SF-3290		7/8	3.50	1.18	1.25	.562
SF-3291		1	3.50	1.37	1.37	.625
SF-3292		1 1/16	3.50	1.43	1.43	.687

Sockets can be configured with the following options:
FM = Fixed Magnet SD = Side Magnet TM = Tubular Magnet
SM = Spring Magnet FL = Fast Lead
Fixed and rotating UHMW plastic sleeves can be special ordered



1/2" Square Drive Sockets For Square Nuts Single Square and Double Square

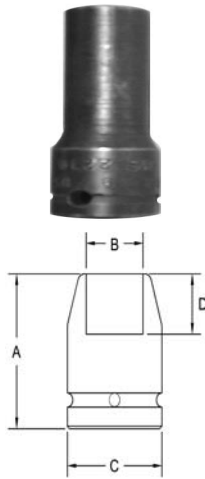


Part # Square	Part # Double Sq	Square Opening	Overall Length (A)	Diameter Nose (B)	Diameter Drive End (C)	Opening Depth (D)
3315	3315-D	1/4	1.50	.500	.937	.187
3316	3316-D	9/32	1.50	.500	.937	.187
3317	3317-D	5/16	1.50	.625	.937	.250
3318	3318-D	3/8	1.50	.750	.937	.250
3319	3319-D	7/16	1.50	.875	.937	.281
3320	3320-D	1/2	1.50	1.00	1.00	.343
3321	3321-D	9/16	1.50	1.12	1.12	.437
3322	3322-D	19/32	1.50	1.12	1.12	.437
3323	3323-D	5/8	1.50	1.25	1.25	.437
3324	3324-D	11/16	1.50	1.25	1.25	.437
3325	3325-D	3/4	1.50	1.37	1.37	.468
3326	3326-D	13/16	1.50	1.50	1.50	.531
3327	3327-D	7/8	1.50	1.62	1.62	.625
3328	3328-D	1	1.62	1.75	1.75	.625
3329	3329-D	1 1/16	1.75	1.87	1.87	.687
3330	3330-D	1 1/8	1.75	2.00	2.00	.750

Sockets can be configured with the following options:
FM = Fixed Magnet SD = Side Magnet TM = Tubular Magnet
SM = Spring Magnet FL = Fast Lead
Fixed and rotating UHMW plastic sleeves can be special ordered

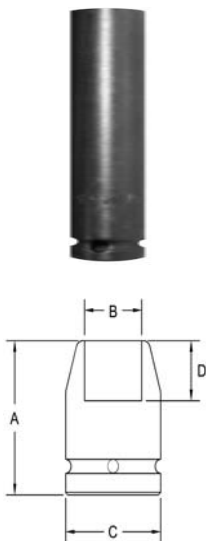
1/2" Square Drive Sockets For Square Nuts

Single Square, Double Square, Thin Wall, Standard Length



Part # Square	Part # Double Sq	Square Opening	Overall Length (A)	Diameter Nose (B)	Diameter Drive End (C)	Opening Depth (D)
3350	3350-D	5/16	1.50	.593	.937	.250
3351	3351-D	3/8	1.50	.687	.937	.250
3352	3352-D	7/16	1.50	.781	.937	.281
3353	3353-D	1/2	1.50	.937	.937	.343
3354	3354-D	9/16	1.50	1.00	1.00	.437
3355	3355-D	5/8	1.50	1.09	1.12	.437

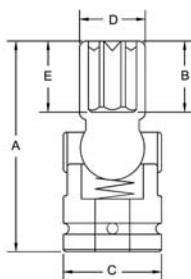
Single Square and Double Square, Long and Extra Long Length



Part # Square	Part # Double Sq	Square Opening	Overall Length (A)	Diameter Nose (B)	Diameter Drive End (C)	Opening Depth (D)
3375	3375-D	3/8	2.25	.750	.937	.250
3376	3376-D	3/8	3.25	.750	.937	.250
3377	3377-D	7/16	2.25	.875	.937	.281
3378	3378-D	7/16	3.25	.875	.937	.281
3379	3379-D	1/2	2.25	1.00	1.00	.343
3380	3380-D	1/2	3.25	1.00	1.00	.437
3381	3381-D	9/16	2.25	1.12	1.12	.437
3382	3382-D	9/16	3.25	1.12	1.12	.437
3383	3383-D	5/8	2.25	1.25	1.25	.437
3384	3384-D	5/8	3.50	1.25	1.25	.437
3385	3385-D	11/16	3.50	1.25	1.25	.437
3386	3386-D	3/4	2.25	1.37	1.37	.468
3387	3387-D	13/16	3.50	1.50	1.50	.531
3388	3388-D	7/8	2.25	1.62	1.62	.625
3389	3389-D	7/8	3.50	1.62	1.62	.625
3390	3390-D	1	2.25	1.75	1.75	.625
3391	3391-D	15/16	3.50	1.62	1.62	.625
3392	3392-D	1	3.50	1.75	1.75	.625
3393	3393-D	1 1/16	3.50	1.87	1.87	.687
3394	3394-D	1 1/8	3.50	2.00	2.00	.750

Sockets can be configured with the following options:
FM = Fixed Magnet SD = Side Magnet TM = Tubular Magnet
SM = Spring Magnet FL = Fast Lead
Fixed and rotating UHMW plastic sleeves can be special ordered

1/2" Square Drive Universal Wrenches 6 Point



Part # 6 Point	Hex Opening	Overall Length (A)	Socket Length (B)	Socket Diameter (C)	Nose End Diameter (D)	Clearance Depth (E)
UA341	3/8	2.17	.59	1.10	.59	2.56
UA342	7/16	2.23	.67	1.10	.67	2.56
UA344	1/2	2.29	.75	1.10	.75	2.56
UA346	9/16	2.35	.87	1.10	.87	2.56
UA348	5/8	2.42	.91	1.10	.91	2.56
UA351	11/16	2.57	1.02	1.26	1.02	2.56
UA352	3/4	2.57	1.10	1.26	1.10	2.56
UA355	13/16	2.89	1.18	1.26	1.18	2.56
UA356	7/8	2.89	1.26	1.26	1.26	2.56
UA357	15/16	2.89	1.34	1.26	1.34	2.56

Sockets can be configured with the following options:
FM = Fixed Magnet

1/2" Square Drive Universal Wrenches

6 Point and 12 Point Hex, Standard and Tension Type Extensions



Part # 6 Point	Part # Tension	Hex Opening	Overall Length (A)	Socket Length (B)	Socket Diameter (C)	Nose End Diameter (D)	Clearance Depth (E)
3414	3414-D	3/8	3.00	.812	.625	.531	.437
3415	3415-D	3/8	6.00	.812	.625	.531	.437
3416	3416-D	3/8	9.00	.812	.625	.531	.437
3417	3417-D	7/16	3.00	.875	.625	.625	.500
3418	3418-D	7/16	4.00	.875	.625	.625	.500
3419	3419-D	7/16	6.00	.875	.625	.625	.500
3420	3420-D	7/16	9.00	.875	.625	.625	.500
3421	3421-D	7/16	12.0	.875	.625	.625	.500
3422	3422-D	1/2	3.00	.875	.687	.687	.500
3423	3423-D	1/2	4.00	.875	.687	.687	.500
3424	3424-D	1/2	6.00	.875	.687	.687	.500
3425	3425-D	1/2	9.00	.875	.687	.687	.500
3426	3426-D	1/2	3.00	1.00	.750	.750	.562
3427	3427-D	1/2	4.00	1.00	.750	.750	.562
3428	3428-D	1/2	6.00	1.00	.750	.750	.562
3429	3429-D	1/2	9.00	1.00	.750	.750	.562
3430	3430-D	1/2	12.0	1.00	.750	.750	.562
3431	3431-D	1/2	3.00	1.00	.875	.687	.468
3432	3432-D	1/2	6.00	1.00	.875	.687	.468
3433	3433-D	1/2	9.00	1.00	.875	.687	.468
3434	3434-D	1/2	12.0	1.00	.875	.687	.468
3435	3435-D	9/16	3.00	1.00	.812	.812	.562
3436	3436-D	9/16	4.00	1.00	.812	.812	.562
3437	3437-D	9/16	6.00	1.00	.812	.812	.562
3438	3438-D	9/16	9.00	1.00	.812	.812	.562
3439	3439-D	9/16	12.0	1.00	.812	.812	.562
3440	3440-D	9/16	3.00	1.06	.875	.750	.531
3441	3441-D	9/16	4.00	1.06	.875	.750	.531
3442	3442-D	9/16	6.00	1.06	.875	.750	.531
3443	3443-D	9/16	9.00	1.06	.875	.750	.531
3444	3444-D	9/16	12.0	1.06	.875	.750	.531
3445	3445-D	9/16	3.00	1.12	1.00	.750	.562
3446	3446-D	9/16	4.00	1.12	1.00	.750	.562
3447	3447-D	9/16	6.00	1.12	1.00	.750	.562
3448	3448-D	9/16	9.00	1.12	1.00	.750	.562
3449	3449-D	5/8	3.00	1.12	.875	.875	.593
3450	3450-D	5/8	4.00	1.12	.875	.875	.593
3451	3451-D	5/8	6.00	1.12	.875	.875	.593
3452	3452-D	5/8	9.00	1.12	.875	.875	.593
3453	3453-D	5/8	12.0	1.12	.875	.875	.593

CONTINUED



1/2" Square Drive Universal Wrenches

6 Point and 12 Point Hex, Standard and Tension Type Extensions



Part # 6 Point	Part # 12 Point	Hex Opening	Overall Length (A)	Socket Length (B)	Socket Diameter (C)	Nose End Diameter (D)	Clearance Depth (E)
3454	3454-D	5/8	3.00	1.18	1.00	.843	.625
3455	3455-D	5/8	6.00	1.18	1.00	.843	.625
3456	3456-D	5/8	9.00	1.18	1.00	.843	.625
3457	3457-D	5/8	12.0	1.18	1.00	.843	.625
3458	3458-D	11/16	3.00	1.25	1.00	1.00	.687
3459	3459-D	11/16	4.00	1.25	1.00	1.00	.687
3460	3460-D	11/16	6.00	1.25	1.00	1.00	.687
3461	3461-D	11/16	9.00	1.25	1.00	1.00	.687
3462	3462-D	11/16	12.0	1.25	1.00	1.00	.687
3463	3463-D	3/4	3.00	1.25	1.12	1.12	.687
3464	3464-D	3/4	4.00	1.25	1.12	1.12	.687
3465	3465-D	3/4	6.00	1.25	1.12	1.12	.687
3466	3466-D	3/4	9.00	1.25	1.12	1.12	.687
3467	3467-D	3/4	12.0	1.25	1.12	1.12	.687
3468	3468-D	3/4	3.00	1.37	1.25	1.03	.640
3469	3469-D	3/4	4.00	1.37	1.25	1.03	.640
3470	3470-D	3/4	6.00	1.37	1.25	1.03	.640
3471	3471-D	3/4	9.00	1.37	1.25	1.03	.640
3472	3472-D	3/4	12.0	1.37	1.25	1.03	.640
3473	3473-D	15/16	3.00	1.37	1.31	1.31	.640
3474	3474-D	15/16	4.00	1.37	1.31	1.31	.640
3475	3475-D	15/16	6.00	1.37	1.31	1.31	.640
3476	3476-D	15/16	9.00	1.37	1.31	1.31	.640
3477	3477-D	15/16	12.0	1.37	1.31	1.31	.640

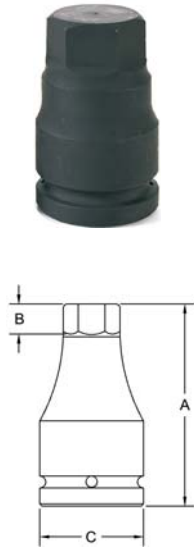
Sockets can be configured with the following options:

S = Standard (Floppy)

T = Tension

FM = Fixed Magnetic

1/2" Square Drive METRIC Impact Hex Drivers



Part # Hex	Hex Size	Overall Length (A)	Depth Nose (B)	Diameter Drive End (C)
0245	6	2.95	2.00	.98
0246	7	2.95	2.00	.98
0247	8	2.95	2.00	.98
0248	10	2.95	2.00	.98
0249	11	2.95	2.00	.98
0250	12	2.95	2.00	.98
0251	13	2.95	2.00	.98
0252	14	2.95	2.00	.98
0253	15	2.95	2.00	.98
0254	16	2.95	2.00	.98
0255	17	2.95	2.00	.98
0256	18	2.95	2.00	.98
0257	19	2.95	2.00	.98

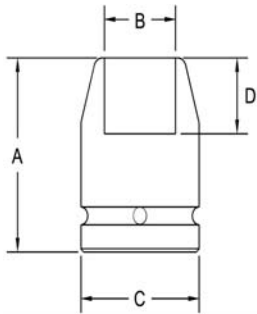
1/2" Square Drive Sockets METRIC Universal Hex Drivers



Part # Hex	Hex Size	Overall Length (A)	Depth Nose (B)	Diameter Drive End (C)
0210	6	2.95	.59	1.10
0211	8	2.95	.79	1.10
0212	10	2.95	.79	1.10
0213	12	2.95	.79	1.10
0214	14	2.95	.79	1.10
0215	15	2.95	.79	1.10
0216	17	2.95	.79	1.10
0217	18	2.95	.79	1.10
0218	19	2.95	.79	1.10

1/2" Square Drive Sockets METRIC

6 Point and Double Hex, Standard Length

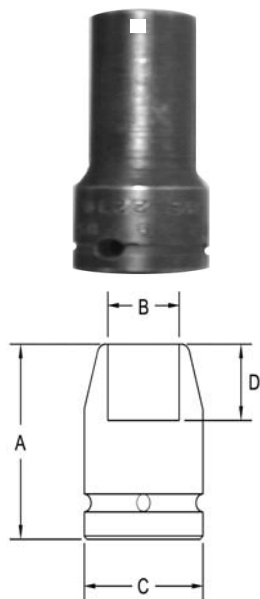


Part # 6 Point	Part # Double Hex	Hex Opening	Overall Length (A)	Diameter Nose (B)	Diameter Drive End (C)	Opening Depth (D)
3497	3497-D	10	38.1	16.7	23.8	6.4
3498	3498-D	11	38.1	17.5	23.8	7.2
3499	3499-D	12	38.1	19.1	23.8	7.2
3500	3500-D	13	38.1	22.2	23.8	8.7
3501	3501-D	14	38.1	22.2	23.8	11.1
3502	3502-D	15	38.1	23.8	23.8	11.1
3503	3503-D	16	38.1	25.4	25.4	11.1
3504	3504-D	17	38.1	28.6	28.6	11.1
3505	3505-D	18	38.1	28.6	28.6	11.1
3506	3506-D	19	38.1	28.6	28.6	11.9
3507	3507-D	20	38.1	31.7	31.7	11.9
3508	3508-D	21	38.1	31.7	31.7	13.5
3509	3509-D	22	38.1	33.3	33.3	14.3
3510	3510-D	23	38.1	34.9	34.9	15.9
3511	3511-D	24	38.1	34.9	34.9	15.9
3512	3512-D	25	38.1	38.1	38.1	15.9
3513	3513-D	26	38.1	38.1	38.1	15.9
3514	3514-D	27	41.3	41.3	41.3	17.5
3515	3515-D	28	41.3	41.3	41.3	19.1
3516	3516-D	29	41.3	44.4	44.4	19.1
3517	3517-D	30	41.3	44.4	44.4	19.1
3518	3518-D	32	44.4	44.4	44.4	20.6
3519	3519-D	33	44.4	47.6	47.6	20.6
3520	3520-D	34	47.6	47.5	47.5	20.5
3521	3521-D	35	47.6	50.8	50.8	20.6
3522	3522-D	36	47.6	50.8	50.8	23.8

Sockets can be configured with the following options:
FM = Fixed Magnet SD = Side Magnet TM = Tubular Magnet
SM = Spring Magnet FL = Fast Lead
Fixed and rotating UHMW plastic sleeves can be special ordered

1/2" Square Drive Sockets METRIC

6 Point and Double Hex, Thin Wall, Standard Length

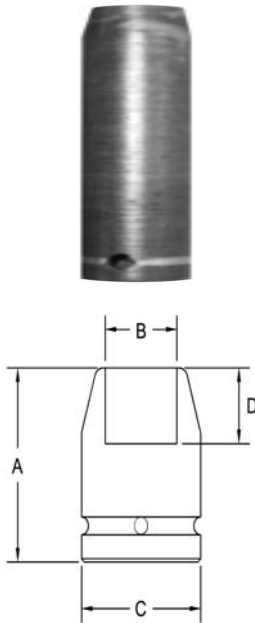


Part # 6 Point	Part # Double Hex	Hex Opening	Overall Length (A)	Diameter Nose (B)	Diameter Drive End (C)	Opening Depth (D)
3542	3542-D	10	38.1	15.9	23.8	6.4
3543	3543-D	11	38.1	16.7	23.8	7.2
3544	3544-D	12	38.1	17.5	23.8	7.2
3545	3545-D	13	38.1	18.7	23.8	8.7
3546	3546-D	14	38.1	20.6	23.8	11.1
3547	3547-D	15	38.1	22.2	23.8	11.1
3548	3548-D	16	38.1	22.2	23.8	11.1
3549	3549-D	17	38.1	23.8	23.8	11.1
3550	3550-D	18	38.1	25.4	25.4	11.1
3551	3551-D	19	38.1	26.3	26.3	11.9
3552	3552-D	20	38.1	27.0	28.6	11.9
3553	3553-D	21	38.1	28.6	28.6	13.5
3554	3554-D	22	38.1	30.2	31.7	14.3

Sockets can be configured with the following options:
FM = Fixed Magnet SD = Side Magnet TM = Tubular Magnet
SM = Spring Magnet FL = Fast Lead
Fixed and rotating UHMW plastic sleeves can be special ordered



1/2" Square Drive Sockets METRIC 6 Point and Double Hex, Long Length

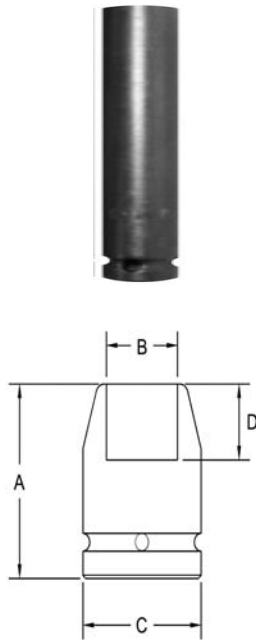


Part # 6 Point	Part # Double Hex	Hex Opening	Overall Length (A)	Diameter Nose (B)	Diameter Drive End (C)	Opening Depth (D)
3575	3575-D	10	57.1	16.7	23.8	6.4
3576	3576-D	11	57.1	17.5	23.8	7.2
3577	3577-D	12	57.1	19.1	23.8	7.2
3578	3578-D	13	57.1	22.2	23.8	8.7
3579	3579-D	14	57.1	22.2	23.8	11.1
3580	3580-D	15	57.1	23.8	23.8	11.1
3581	3581-D	16	57.1	25.4	25.4	11.1
3582	3582-D	17	57.1	28.6	28.6	11.1
3583	3583-D	18	57.1	28.6	28.6	11.1
3584	3584-D	19	57.1	28.6	28.6	11.9
3585	3585-D	20	57.1	31.7	31.7	11.9
3586	3586-D	21	57.1	31.7	31.7	13.5
3587	3587-D	22	57.1	33.3	33.3	14.3
3588	3588-D	23	57.1	34.9	34.9	15.9
3589	3589-D	24	57.1	34.9	34.9	15.9
3590	3590-D	25	57.1	38.1	38.1	15.9
3591	3591-D	26	57.1	38.1	38.1	15.9
3592	3592-D	27	60.3	41.3	41.3	17.5
3593	3593-D	28	60.3	41.3	41.3	19.1
3594	3594-D	29	60.3	44.4	44.4	19.1
3595	3595-D	30	60.3	44.4	44.4	19.1
3596	3596-D	32	60.3	44.4	44.4	20.6

Sockets can be configured with the following options:
FM = Fixed Magnet SD = Side Magnet TM = Tubular Magnet
SM = Spring Magnet FL = Fast Lead
Fixed and rotating UHMW plastic sleeves can be special ordered

1/2" Square Drive Sockets METRIC

6 Point and Double Hex, Extra Long Length

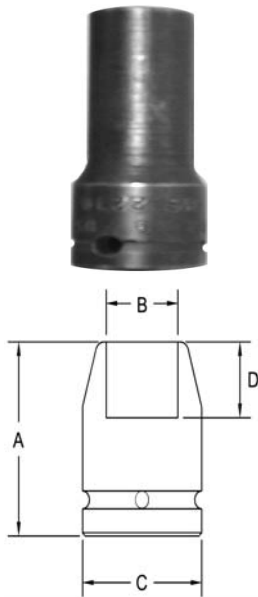


Part # 6 Point	Part # Double Hex	Hex Opening	Overall Length (A)	Diameter Nose (B)	Diameter Drive End (C)	Opening Depth (D)
3616	3616-D	10	82.5	16.7	23.8	6.4
3617	3617-D	11	82.5	17.5	23.8	7.2
3618	3618-D	12	82.5	19.1	23.8	7.2
3619	3619-D	13	82.5	22.2	23.8	8.7
3620	3620-D	14	82.5	22.2	23.8	11.1
3621	3621-D	15	82.5	23.8	23.8	11.1
3622	3622-D	16	82.5	25.4	25.4	11.1
3623	3623-D	17	82.5	28.6	28.6	11.1
3624	3624-D	18	82.5	28.6	28.6	11.1
3625	3625-D	19	82.5	28.6	28.6	11.9
3626	3626-D	20	88.9	31.7	31.7	11.9
3627	3627-D	21	88.9	31.7	31.7	13.5
3628	3628-D	22	88.9	33.3	33.3	14.3
3629	3629-D	23	88.9	34.9	34.9	15.9

Sockets can be configured with the following options:
FM = Fixed Magnet SD = Side Magnet TM = Tubular Magnet
SM = Spring Magnet FL = Fast Lead
Fixed and rotating UHMW plastic sleeves can be special ordered

1/2" Square Drive Sockets METRIC

6 Point and Double Hex, Thin Wall, Extra Long Length

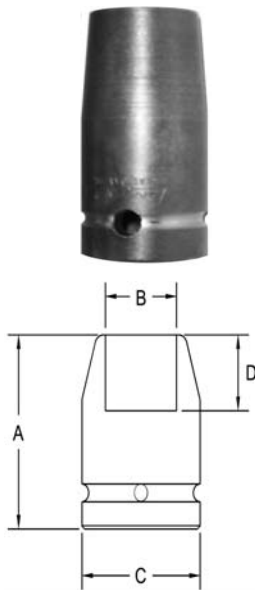


Part # 6 Point	Part # Double Hex	Hex Opening	Overall Length (A)	Diameter Nose (B)	Diameter Drive End (C)	Opening Depth (D)
3650	3650-D	10	82.5	15.9	23.8	6.4
3651	3651-D	11	82.5	16.7	23.8	7.2
3652	3652-D	12	82.5	17.5	23.8	7.2
3653	3653-D	13	82.5	18.7	23.8	8.7
3654	3654-D	14	82.5	20.6	23.8	11.1
3655	3655-D	15	82.5	22.2	23.8	11.1
3656	3656-D	16	82.5	22.2	23.8	11.1
3657	3657-D	17	82.5	23.8	23.8	11.1
3658	3658-D	18	82.5	25.4	25.4	11.1
3659	3659-D	19	82.5	26.3	26.3	11.9
3660	3660-D	20	82.5	28.6	28.6	11.9
3661	3661-D	21	88.9	28.6	28.6	13.5
3662	3662-D	22	88.9	30.2	31.7	14.3
3663	3663-D	23	88.9	31.7	31.7	15.9
3664	3664-D	24	88.9	33.3	33.3	15.9
3665	3665-D	26	88.9	34.9	34.9	15.9
3666	3666-D	27	88.9	36.5	38.1	17.5
3667	3667-D	28	88.9	36.5	38.1	19.1
3668	3668-D	29	88.9	38.1	38.1	19.1
3669	3669-D	30	88.9	39.7	41.1	19.1
3670	3670-D	32	88.9	42.9	42.9	20.6

Sockets can be configured with the following options:
FM = Fixed Magnet SD = Side Magnet TM = Tubular Magnet
SM = Spring Magnet FL = Fast Lead
Fixed and rotating UHMW plastic sleeves can be special ordered

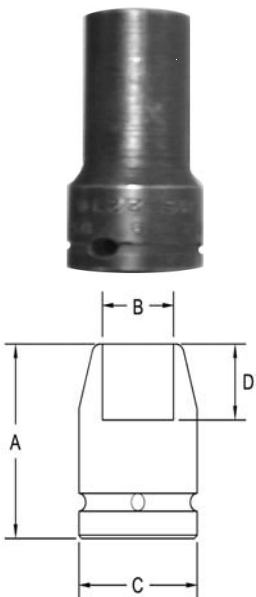
1/2" Square Drive Sockets METRIC

Surface Drive, Standard Length



Part # Surface Drive	Hex Opening	Overall Length (A)	Diameter Nose (B)	Diameter Drive End (C)	Opening Depth (D)
SF-3690	10	38.1	16.7	23.8	6.4
SF-3691	11	38.1	17.5	23.8	7.2
SF-3692	12	38.1	19.1	23.8	7.2
SF-3693	13	38.1	22.2	23.8	8.7
SF-3694	14	38.1	23.8	23.8	11.1
SF-3695	15	38.1	23.8	23.8	11.1
SF-3696	16	38.1	25.4	25.4	11.1
SF-3697	17	38.1	28.6	28.6	11.1
SF-3698	18	38.1	28.6	28.6	11.1
SF-3699	19	38.1	28.6	28.6	11.1
SF-3700	20	38.1	31.7	31.7	11.9
SF-3701	21	38.1	31.7	31.7	11.9
SF-3702	22	38.1	33.3	33.3	14.3
SF-3703	23	38.1	34.9	34.9	15.9
SF-3704	24	38.1	34.9	34.9	15.9

Surface Drive, Thin Wall, Standard Length



Part # Surface Drive	Hex Opening	Overall Length (A)	Diameter Nose (B)	Diameter Drive End (C)	Opening Depth (D)
SF-3724	10	38.1	15.9	23.8	6.4
SF-3725	11	38.1	16.7	23.8	7.2
SF-3726	12	38.1	17.5	23.8	7.2
SF-3727	13	38.1	18.7	23.8	8.7
SF-3728	14	38.1	20.6	23.8	11.1
SF-3729	15	38.1	22.2	23.8	11.1
SF-3730	16	38.1	22.2	23.8	11.1
SF-3731	17	38.1	23.8	23.8	11.1
SF-3732	18	38.1	25.4	25.4	11.1
SF-3733	19	38.1	26.3	26.3	11.9
SF-3734	20	38.1	27.0	28.6	11.9
SF-3735	21	38.1	28.6	28.6	11.9
SF-3736	22	38.1	30.2	31.7	11.1

Sockets can be configured with the following options:

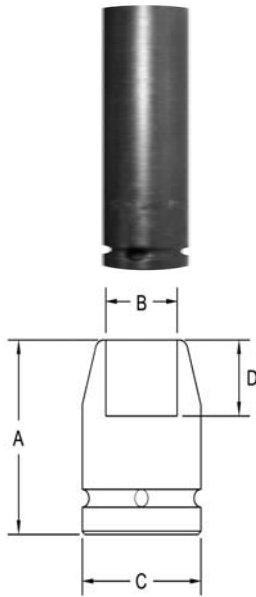
FM = Fixed Magnet SD = Side Magnet TM = Tubular Magnet

SM = Spring Magnet FL = Fast Lead

Fixed and rotating UHMW plastic sleeves can be special ordered

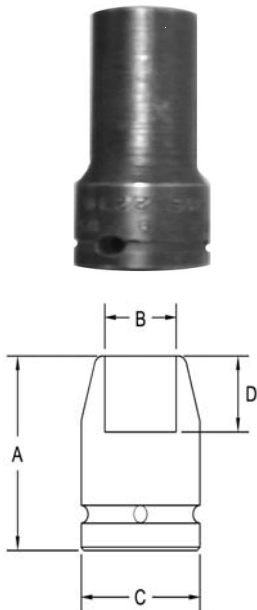
1/2" Square Drive Sockets METRIC

Surface Drive, Long Length



Part # Surface Drive	Hex Opening	Overall Length (A)	Diameter Nose (B)	Diameter Drive End (C)	Opening Depth (D)
SF-3756	10	57.1	16.7	23.8	6.4
SF-3757	11	57.1	17.5	23.8	7.2
SF-3758	12	57.1	19.1	23.8	7.2
SF-3758	13	57.1	22.2	23.8	7.2
SF-3759	14	57.1	22.2	23.8	11.1
SF-3760	15	57.1	23.8	23.8	11.1
SF-3761	16	57.1	25.4	25.4	11.1
SF-3762	17	57.1	28.6	28.6	11.1
SF-3763	18	57.1	28.6	28.6	11.1
SF-3764	19	57.1	28.6	28.6	11.9
SF-3765	21	57.1	31.7	31.7	13.5
SF-3766	22	57.1	33.3	33.3	14.3
SF-3767	23	57.1	34.9	34.9	15.9
SF-3768	24	57.1	34.9	34.9	15.9

Surface Drive, Thin Wall, Standard Length

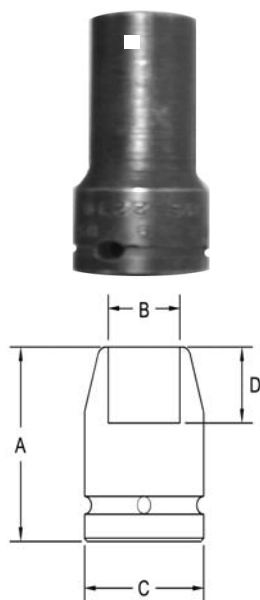


Part # Surface Drive	Hex Opening	Overall Length (A)	Diameter Nose (B)	Diameter Drive End (C)	Opening Depth (D)
SF-3788	10	82.5	16.7	23.8	6.4
SF-3789	11	82.5	17.5	23.8	7.2
SF-3790	12	82.5	19.1	23.8	7.2
SF-3791	13	82.5	22.2	23.8	11.1
SF-3792	14	82.5	22.2	23.8	11.1
SF-3793	15	82.5	23.8	23.8	11.1
SF-3794	16	82.5	25.4	25.4	11.1
SF-3795	17	82.5	28.6	28.6	11.1
SF-3796	18	82.5	28.6	28.6	11.1
SF-3797	19	82.5	28.6	28.6	11.9
SF-3798	21	88.9	31.7	31.7	13.5
SF-3799	22	88.9	33.3	33.3	14.3
SF-3800	23	88.9	34.9	34.9	15.9
SF-3801	24	88.9	34.9	34.9	15.9

Sockets can be configured with the following options:
FM = Fixed Magnet SD = Side Magnet TM = Tubular Magnet
SM = Spring Magnet FL = Fast Lead
Fixed and rotating UHMW plastic sleeves can be special ordered

1/2" Square Drive Sockets METRIC

Surface Drive, Thin Wall, Extra Long Length



Part # Surface Drive	Hex Opening	Overall Length (A)	Diameter Nose (B)	Diameter Drive End (C)	Opening Depth (D)
SF-3820	10	82.5	15.9	23.8	6.4
SF-3821	11	82.5	16.7	23.8	7.2
SF-3822	12	82.5	17.5	23.8	8.7
SF-3823	13	82.5	18.7	23.8	11.1
SF-3824	14	82.5	20.6	23.8	11.1
SF-3825	15	82.5	22.2	23.8	11.1
SF-3826	16	82.5	22.2	23.8	11.1
SF-3827	17	82.5	23.8	23.8	11.1
SF-3828	18	82.5	25.4	25.4	11.1
SF-3829	19	82.5	26.3	26.3	11.9
SF-3830	21	88.9	28.6	28.6	13.5
SF-3831	22	88.9	30.2	31.7	15.9

Sockets can be configured with the following options:
FM = Fixed Magnet SD = Side Magnet TM = Tubular Magnet
SM = Spring Magnet FL = Fast Lead
Fixed and rotating UHMW plastic sleeves can be special ordered



1/2" Square Drive Universal Wrenches METRIC

6 Point and 12 Point Hex, Standard and Tension Type



Part # 6 Point	Part # 12 Point	Hex Opening	Overall Length (A)	Socket Length (B)	Socket Diameter (C)	Nose End Diameter (D)	Clearance Depth (E)
3852	3852-D	12	76	23.8	22.2	17.5	10.3
3853	3853-D	12	102	23.8	22.2	17.5	10.3
3854	3854-D	12	152	23.8	22.2	17.5	10.3
3855	3855-D	12	229	23.8	22.2	17.5	10.3
3856	3856-D	12	305	23.8	22.2	17.5	10.3
3857	3857-D	13	76	25.5	22.2	17.5	11.9
3858	3858-D	13	102	25.4	22.2	17.5	11.9
3859	3859-D	13	152	25.4	22.2	17.5	11.9
3860	3860-D	13	229	25.4	22.2	17.5	11.9
3861	3861-D	13	305	25.4	22.2	17.5	11.9
3862	3862-D	14	102	27.0	22.2	19.1	13.5
3863	3863-D	14	152	27.0	22.2	19.1	13.5
3864	3864-D	14	229	27.0	22.2	19.1	13.5
3865	3865-D	14	305	27.0	22.2	19.1	13.5
3866	3866-D	15	76	28.6	25.4	19.8	14.3
3867	3867-D	15	102	28.6	25.4	19.8	14.3
3868	3868-D	15	152	28.6	25.4	19.8	14.3
3869	3869-D	15	229	28.6	25.4	19.8	14.3
3870	3870-D	15	305	28.6	25.4	19.8	14.3
3871	3871-D	16	76	30.2	25.4	21.4	15.9
3872	3872-D	16	102	30.2	25.4	21.4	15.9
3873	3873-D	16	152	30.2	25.4	21.4	15.9
3874	3874-D	16	229	30.2	25.4	21.4	15.9
3875	3875-D	16	305	30.2	25.4	21.4	15.9
3876	3876-D	17	76	31.8	25.4	25.4	17.5
3877	3877-D	17	102	31.8	25.4	25.4	17.5
3878	3878-D	17	152	31.8	25.4	25.4	17.5
3879	3879-D	17	229	31.8	25.4	25.4	17.5
3880	3880-D	18	76	31.8	25.4	25.4	17.5
3881	3881-D	18	102	31.8	25.4	25.4	17.5
3882	3882-D	18	152	31.8	25.4	25.4	17.5
3883	3883-D	18	229	31.8	25.4	25.4	17.5
3884	3884-D	18	305	31.8	25.4	25.4	17.5
3885	3885-D	19	76	34.9	31.8	26.2	16.3
3886	3886-D	19	102	34.9	31.8	26.2	16.3
3887	3887-D	19	152	34.9	31.8	26.2	16.3
3888	3888-D	19	229	34.9	31.8	26.2	16.3
3889	3889-D	19	305	34.9	31.8	26.2	16.3

Sockets can be configured with the following options:

S = Standard (Floppy)

T = Tension

FM = Fixed Magnetic

PHONE (248) 549-1968 FAX (248) 549-1960

WWW.LANCETOOLS.COM

1/2" Square Drive Extensions



Part #	Diameter Drive End (C)	Overall Length (A)
E-3899	.937	1 23/32
E-3900	.937	2
E-3901	.937	3
E-3902	.937	4
E-3903	.937	5
E-3904	.937	6
E-3905	.937	7
E-3906	.937	8
E-3907	.937	9
E-3908	.937	10
E-3909	.937	11
E-3910	.937	12
E-3911	.937	13
E-3912	.937	14
E-3913	.937	15
E-3914	.937	16
E-3915	.937	17
E-3916	.937	18
E-3917	.937	19
E-3918	.937	20
E-3919	.937	21
E-3920	.937	22
E-3921	.937	23
E-3922	.937	24

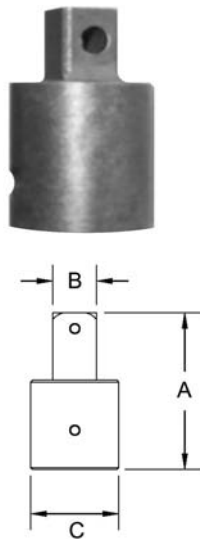
Sockets can be configured with the following options:

P = Pin Lock

B = Ball Lock

UHMW plastic sleeves can be special ordered

1/2" Square Drive Adapters 1/4" to 5/8" Male Square



Part #	Male Square (B)	Female Square (C)	Overall Length (A)
A-3932	1/4	1/2	1 1/2
A-3933	1/4	1/2	2
A-3934	1/4	1/2	3
A-3935	1/4	1/2	4
A-3936	1/4	1/2	5
A-3937	1/4	1/2	6
A-3938	3/8	1/2	1 1/2
A-3939	3/8	1/2	2
A-3940	3/8	1/2	3
A-3941	3/8	1/2	4
A-3942	3/8	1/2	5
A-3943	3/8	1/2	6
A-3944	3/8	1/2	7
A-3945	3/8	1/2	8
A-3946	3/8	1/2	9
A-3947	3/8	1/2	10
A-3948	3/8	1/2	11
A-3949	3/8	1/2	12
A-3950	3/8	1/2	13
A-3951	3/8	1/2	14
A-3952	3/8	1/2	15
A-3953	5/8	1/2	1 1/2
A-3954	5/8	1/2	2
A-3955	5/8	1/2	3
A-3956	5/8	1/2	4
A-3957	5/8	1/2	5
A-3958	5/8	1/2	6
A-3959	5/8	1/2	1 13/16

Sockets can be configured with the following options:

P = Pin Lock

B = Ball Lock